

# NOTICE TO MARINERS



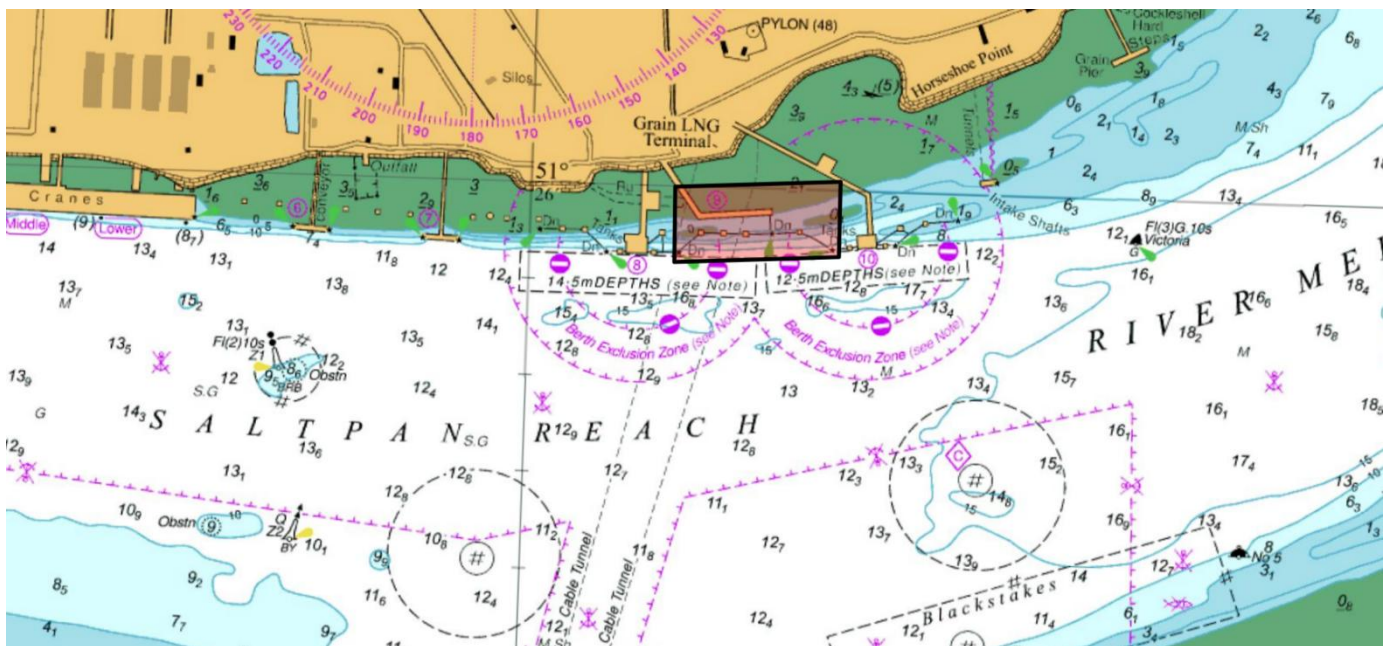
## NtoM 007 - 2026

### River Medway – Saltpan Reach

### Grain LNG Jetty 10 – Maintenance Work

**NOTICE IS HEREBY GIVEN** ... General maintenance works will be carried out on the Grain LNG Access Pontoon, located between LNG Jetties 10 and 8, work will commence this Thursday, 29th January 2026. Personnel will be working at the waterline, and the works are expected to take approximately 4–6 weeks to complete. The safety boat “Westbourne” will be in attendance throughout and will maintain a listening watch on VHF Channel 74.

**All commercial and leisure vessels should pass with caution, adhere to the LNG exclusion zones, and minimise their speed & wash when transiting the area.**



**Admiralty Chart 1834 refers**

Further information may be obtained from Medway VTS on VHF Channel 74, call sign “Medway VTS” or telephone 0151 949 6148 or 0151 949 6650.

**Marine Operations Department  
Peel Ports London Medway**

Notice Issued:  
Notice Expiry:

28<sup>th</sup> January 2026  
12<sup>th</sup> March 2026

Issued on behalf of Port of Sheerness Ltd, the Statutory Harbour Authority for the River Medway and The Swale  
Telephone calls, VHF radio traffic, CCTV and radar traffic images may be recorded at  
the Peel Ports Group Port Control Centre, Liverpool.