



MERSEY DOCKS AND HARBOUR COMPANY LTD

Captain Susan Cloggie-Holden MNM
Group Harbour Master

Liverpool Docks

**LPD003_1_2026_003
ALEXANDRA DOCK
AND BRANCHES**

DEPTHS

Depths are in metres and are reduced to chart datum being 4.93m below Ordnance Datum (Newlyn), which is approximately the level of Lowest Astronomical Tide.

HEIGHTS

Heights are in metres. Underlined figures show heights above Chart Datum.

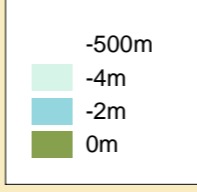
POSITIONS

Positions are referred to OSGB36 National Grid Datum.

UKHO & NTMS

When using this chart please refer to UKHO Admiralty Publications and also local Notice to Mariners and Navigational Warnings.

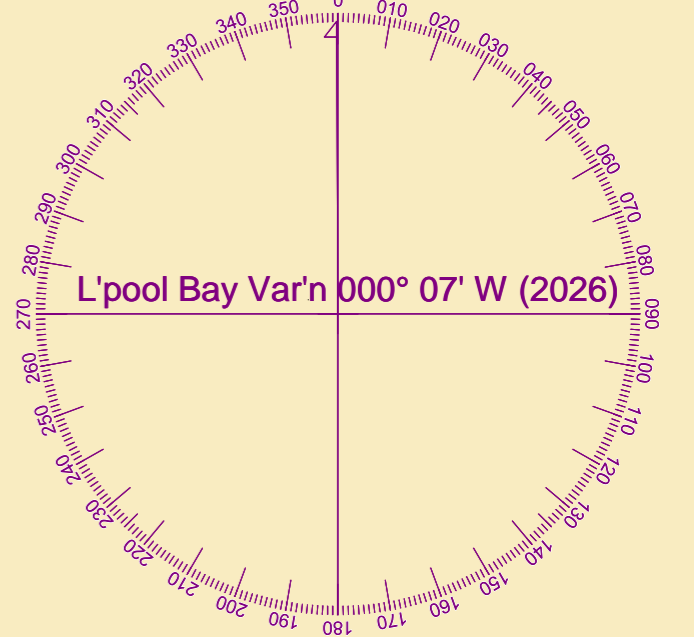
Depth (M)



TOPOGRAPHY

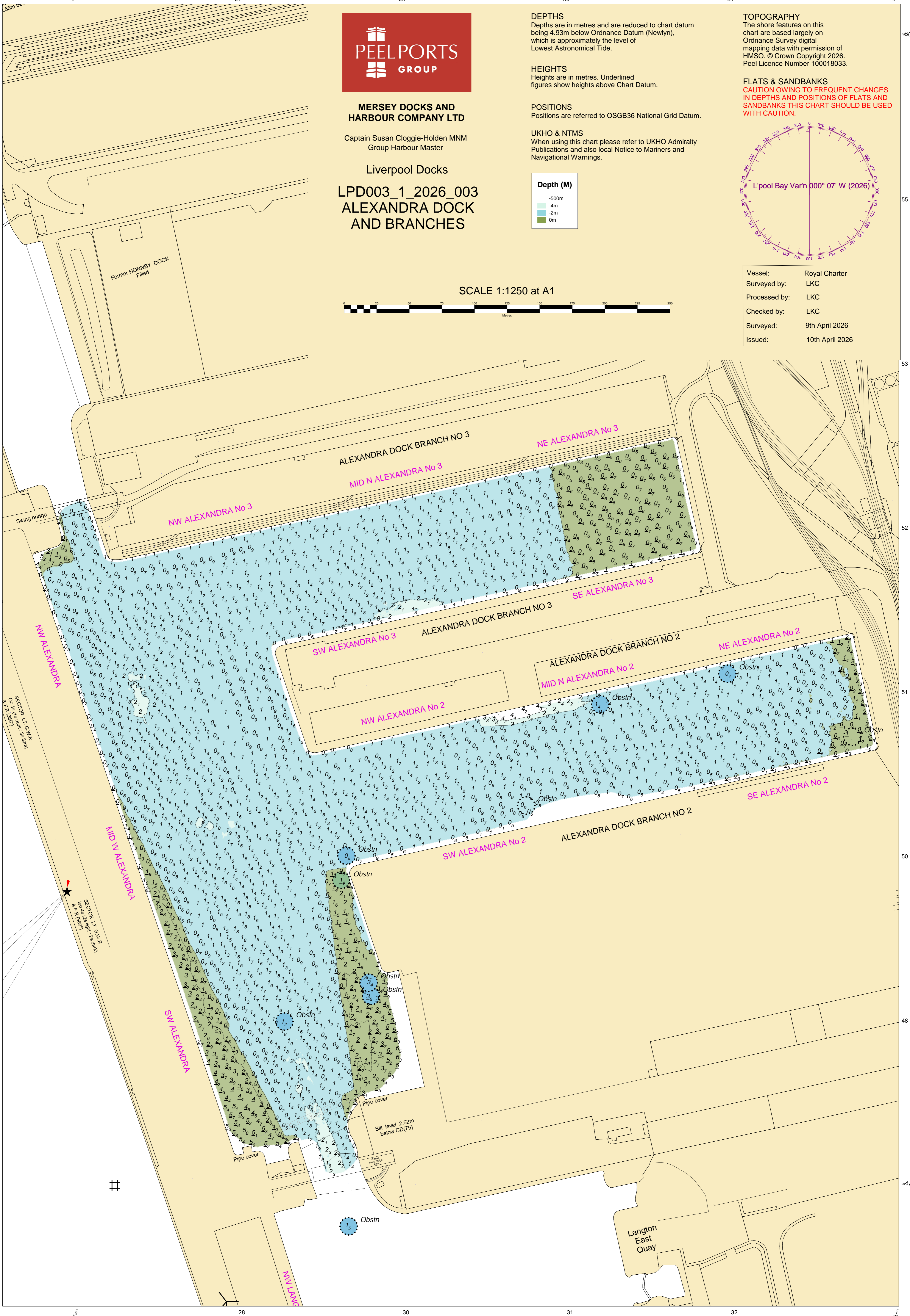
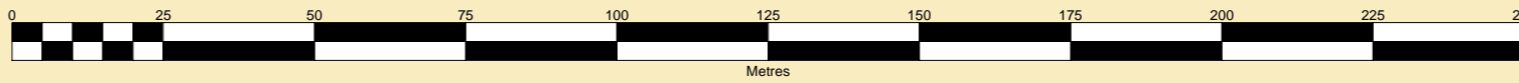
The shore features on this chart are based largely on Ordnance Survey digital mapping data with permission of HMSO. © Crown Copyright 2026. Peel Licence Number 100018033.

FLATS & SANDBANKS
CAUTION OWING TO FREQUENT CHANGES IN DEPTHS AND POSITIONS OF FLATS AND SANDBANKS THIS CHART SHOULD BE USED WITH CAUTION.



Vessel:	Royal Charter
Surveyed by:	LKC
Processed by:	LKC
Checked by:	LKC
Surveyed:	9th April 2026
Issued:	10th April 2026

SCALE 1:1250 at A1



Former HORNBY DOCK Filled

ALEXANDRA DOCK BRANCH NO 3

NE ALEXANDRA No 3

MID N ALEXANDRA No 3

NW ALEXANDRA No 3

SW ALEXANDRA No 3

ALEXANDRA DOCK BRANCH NO 3

SE ALEXANDRA No 3

ALEXANDRA DOCK BRANCH NO 2

NE ALEXANDRA No 2

NW ALEXANDRA No 2

MID N ALEXANDRA No 2

SW ALEXANDRA No 2

ALEXANDRA DOCK BRANCH NO 2

SE ALEXANDRA No 2

MID W ALEXANDRA

SW ALEXANDRA

NW ALEXANDRA

Langton East Quay

Obstn

Pipe cover

Pipe cover

Obstn

Obstn

Obstn

Obstn

Obstn

Swing bridge

SECTOR LIGHT: 3: 250m R

SECTOR LIGHT: 2: 250m R

SECTOR LIGHT: 1: 250m R

SECTOR LIGHT: 4: 250m R

Sill level 2.52m below CD(75)