



MERSEY DOCKS AND HARBOUR COMPANY LTD

Gary Doyle
Group Harbour Master

River Mersey
LPR002_10_2021_002
Cammell Laird's
Wet Basin

DEPTHS
Depths are in metres and are reduced to chart datum being 4.93m below Ordnance Datum (Newlyn), which is approximately the level of Lowest Astronomical Tide.

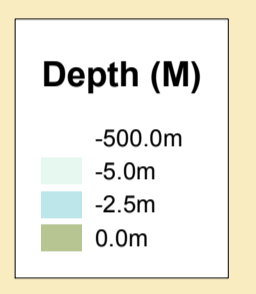
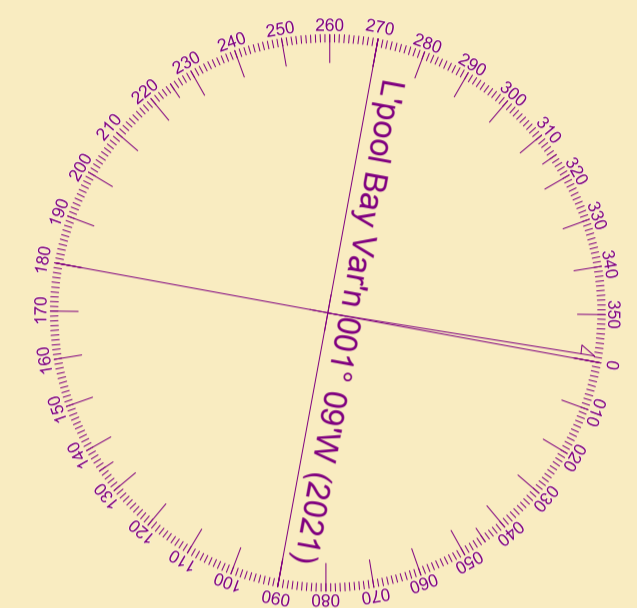
HEIGHTS
Heights are in metres. Underlined figures show heights above Chart Datum.

POSITIONS
Positions are referred to OSGB36 National Grid Datum.

UKHO & NTMS
When using this chart please refer to UKHO Admiralty Publications and also local Notice to Mariners and Navigational Warnings.

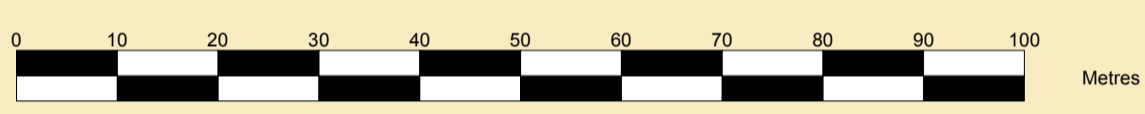
TOPOGRAPHY
The shore features on this chart are based largely on Ordnance Survey digital mapping data with permission of HMSO. © Crown Copyright 2021. Peel Licence Number 100018033.

FLATS & SANDBANKS
CAUTION OWING TO FREQUENT CHANGES IN DEPTHS AND POSITIONS OF FLATS AND SANDBANKS THIS CHART SHOULD BE USED WITH CAUTION.



Surveyed by:	CMcF
Processed by:	NM
Checked by:	NM
Surveyed:	9th December 2021
Issued:	10th December 2021

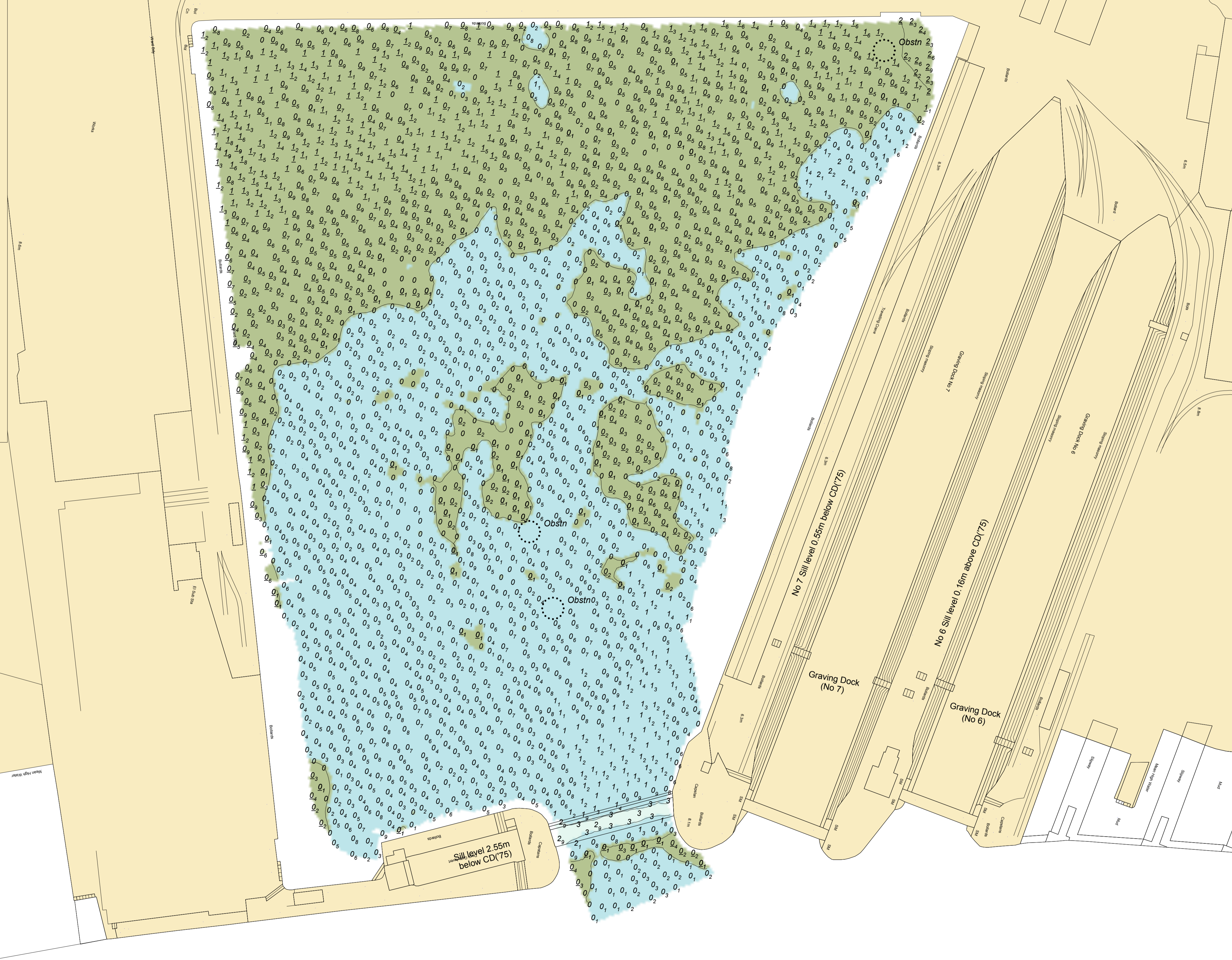
SCALE 1:750 at A1



TRANMERE BASIN

FORMER CAMMELL LAIRDS

Pontoon and Moorings in this area
(see MD&HC Ltd Notice to Mariners No 24 - 2012)



Sill level 2.55m below CD(75)

Graving Dock (No 7)

Graving Dock (No 6)

No 7 Sill level 0.55m below CD(75)

No 6 Sill level 0.16m above CD(75)