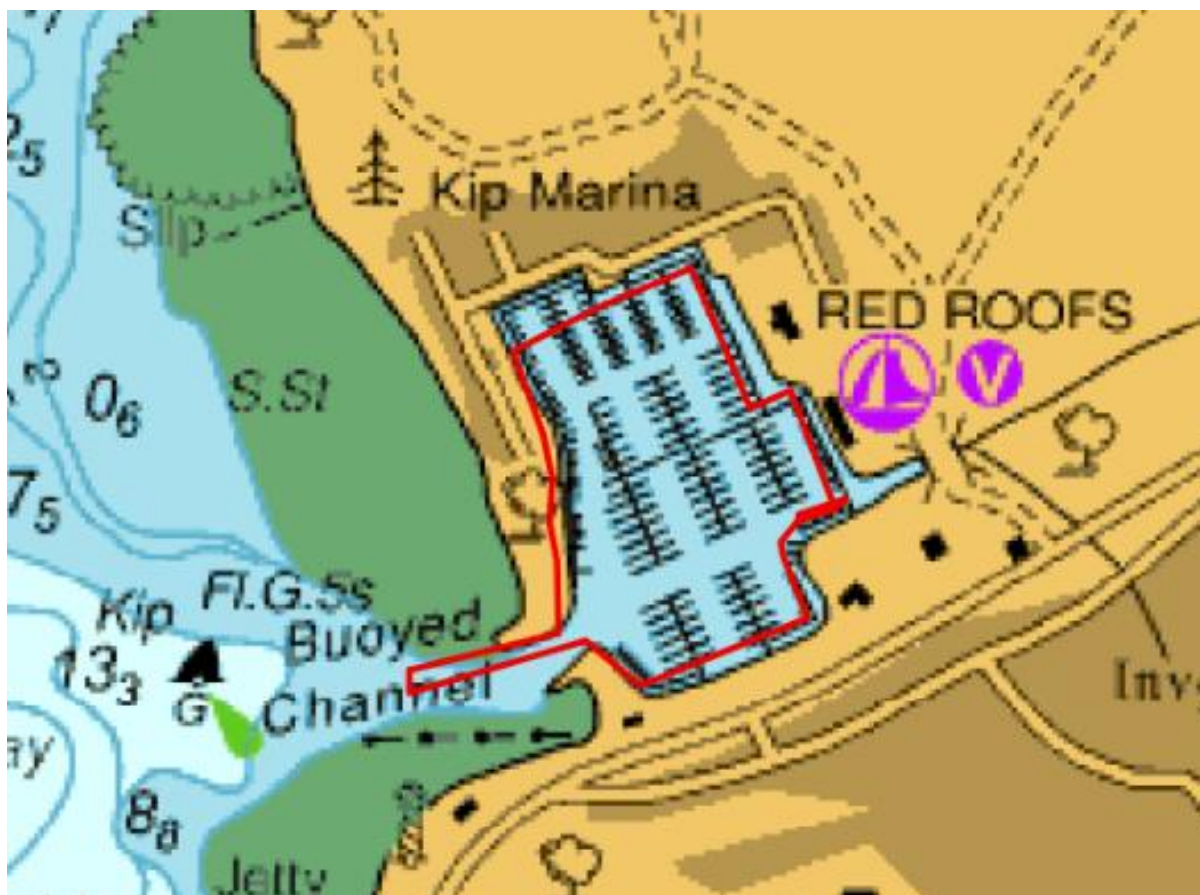


Mariners are advised that dredging operations will be undertaken in the area bounded by red within the marina basin.

Dredging will take place in the marina between the 17th January 2026 and the end of April 2026.



The vessels below will be conducting the dredging works and will maintain a listening watch on VHF Ch12 during operational periods.

<p>Wyre Estuary</p> 	<p>Coastworker</p> 
<p>Casper Owl</p> 	

All mariners are requested to keep clear of the dredging operations and contact the Marina for further details of the operations