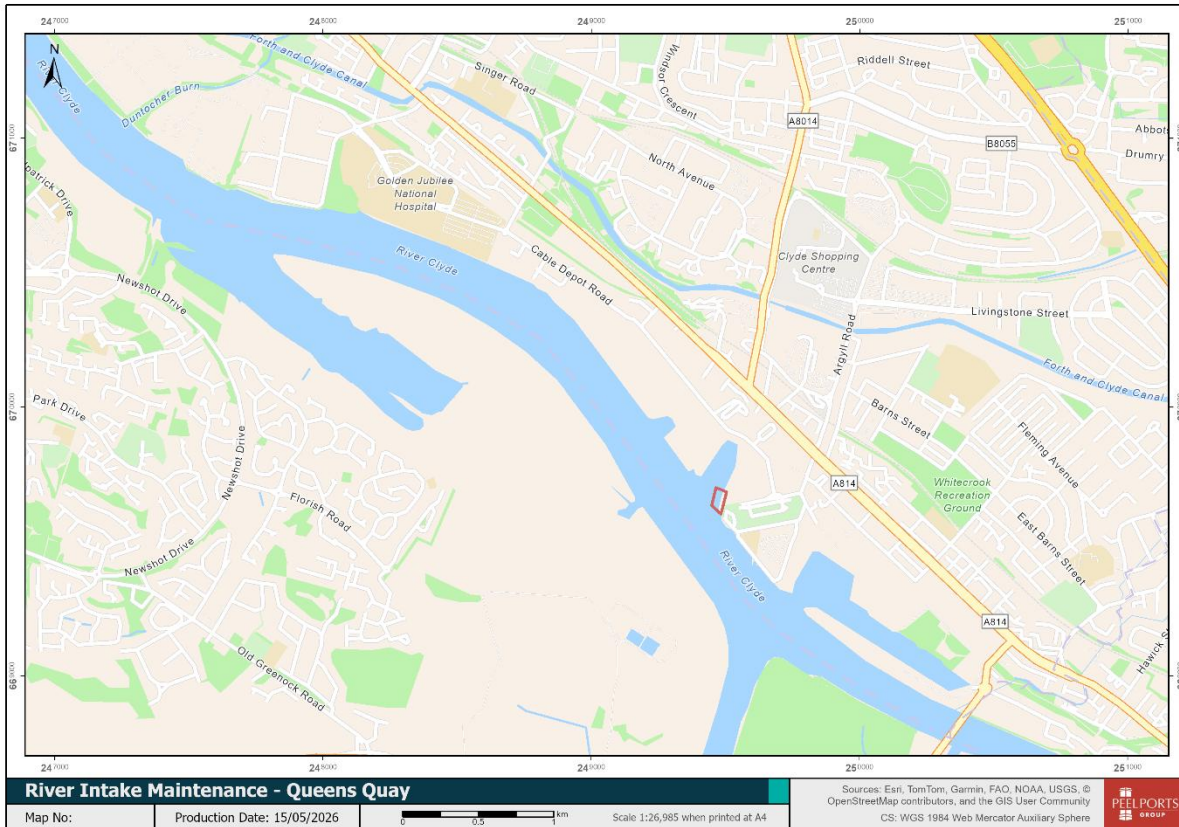


Mariners are advised that maintenance works are planned from 3rd-4th June on river intakes at Queens Quay, Clydebank. Divers will access the area to carry out cleaning and filter replacement works, working from dive support vessel Casper Owl. All appropriate lights and shapes will be displayed during operational periods. Vessels should navigate with additional care when transiting this area.



CASPER OWL

