

Port of East Anglia Great Yarmouth Energy Hub

The east coast's major logistics gateway

[peelports.com](https://www.peelports.com)

Peel Ports Group
More Than Ports







Contents

Peel Ports Group	4
A hub for maritime, logistics, and renewable energy	6
Location and connectivity	8
Offshore energy	10
The New Southern Terminal	12
Aggregates	14
Steel and metals	16
Who we work with	18
State-of-the-art facilities for every requirement	20
Shipping and marine services	21
PortPlus+	22
Skilled teams with sector expertise	24
Unmatched safety and security standards	25
Our own net zero journey	26

Peel Ports Group

We are the UK's second largest port operator, safely handling 70 million tonnes of cargo each year, around 14% of the total market share.

2,000
employees across the
UK and Ireland.

7 ports &
24 terminals.

14%
UK market share.

70 million
tonnes of cargo
handled each year.

£1.5bn +
invested in the last ten
years.

7 statutory harbour
authorities.

But we're much more than ports, as a major employer in the regions where we operate, we're creating trade opportunities, supporting jobs and developing skills for the future, all while reducing the impact of our operations on the environment.



As the UK's second largest port operator, we know a thing or two about supply chains and the safe, efficient transporting of goods.

But we do much more than that.

We're a leading enabler of port-centric solutions, which means our customers benefit from a range of in-port and on-demand services.

Peel Ports Group organises its terminals by clusters in different locations, these are:

- Clydeport
- Dublin
- Liverpool
- Manchester Ship Canal
- Heysham
- Great Yarmouth
- London Medway
- Runcorn
- Humber Bulks Terminal
- Ellesmere Port
- Birkenhead



Our Locations



Peel Ports Group

Peel Ports Logistics

Clydeport

Dublin

Heysham

Birkenhead

Liverpool

Humber Bulk Terminals

Ellesmere Port

Runcorn

Port of East Anglia, Great Yarmouth

London Medway

NORTH SEA

ENGLISH CHANNEL

Welcome to the Port of East Anglia Great Yarmouth

A hub for maritime, logistics and renewable energy. Our new name but our same values—this reflects the level of ambition for the future of the long-established energy hub of Port of East Anglia, Great Yarmouth.

With its prime location on the east coast of England, the port provides an invaluable gateway to the North Sea's thriving offshore energy sector, as well as a key logistics hub for industries such as agriculture, construction, project cargo, and manufacturing.

The port's facilities, combined with its deep-water access, support a range of services including the import and export of goods, vessel repair, and the handling of heavy-lift cargoes. Port of East Anglia, Great Yarmouth's role in the renewable energy market has also expanded significantly, with the port playing a pivotal role in supporting offshore wind projects, providing a vital base for operations, maintenance, and the storage and delivery of components.



2 million
tonnes of cargo annually.

Key facts and figures:

- **11** meters depth
- **No** locks or air draft restrictions, 24/7 access
- **165** acres.
- **50** acres of high capacity storage land.
- **Heavy lift** pad on the quay edge.
- **A complementary** river port with additional storage land, 3.5km of quays and 50 years of supply chain experience in supporting the offshore energy sector
- **1,000** linear meters of berth space river port.
- **Improved** inland road connectivity, and access to rail sidings (7 minutes away)

Commodities we handle:



Decommissioning



Agribulks



Aggregates / Bulks



RoRo



Project Cargo



Cruise



Offshore Wind



Steel



Carbon Capture



Timber



Hydrogen Production



Nuclear Components



Location and connectivity

Strategically located to serve the rapidly growing offshore wind energy sector and a variety of industries across the UK, Port of East Anglia, Great Yarmouth is positioned on the east coast, offering direct access to key North Sea offshore infrastructure. This makes it an ideal base for operations, maintenance, and logistics. The port's close proximity to energy infrastructure reduces vessel transit times, ensuring efficient project management for energy operators.

In addition to its role in energy sector, Port of East Anglia, Great Yarmouth is well-connected to major UK cities and industrial hubs, enhancing its logistics capabilities and access to a skilled workforce. The port benefits from excellent road and rail links, providing efficient access to London, Cambridge, Birmingham, Manchester, and other key cities. The new Herring Bridge crossing further improves connectivity by linking key areas around the port, reducing congestion, and facilitating faster movement of workers, goods and services.

Port of East Anglia, Great Yarmouth also boasts excellent access to the agricultural sector, being strategically located in East Anglia.



Proximity to Major Offshore Wind Farms



Herring Bridge Crossing



Offshore energy

Flexible Storage and Pre-assembly land

Over 60 acres

available for storage and assembly.

Supporting turbines of:

15MW+

Previous Experience

- Installation base for the Sheringham Shoal and Lincs offshore wind farms.
- Purpose-built turbine pre-assembly base for the Galloper and East Anglia ONE offshore wind farms.
- Sizewell C Nuclear Site Development Construction logistical support.
- O&M base for construction support and ongoing maintenance for Scoby Sands, Sherringham Shoal, Dudgeon and Hywind offshore wind sites.

Current capabilities

- Heavy lift capability.
- Jack up vessels / berth.
- RoRo berths.
- No air draft restriction / locks.
- Dedicated or Multi-user berth space.
- 24/7 operation.
- Strong local supply chain.

Peel Ports Group

Great Yarmouth





WIND FARM



OPERATIONAL OR OFFSHORE CONSTRUCTION UNDERWAY



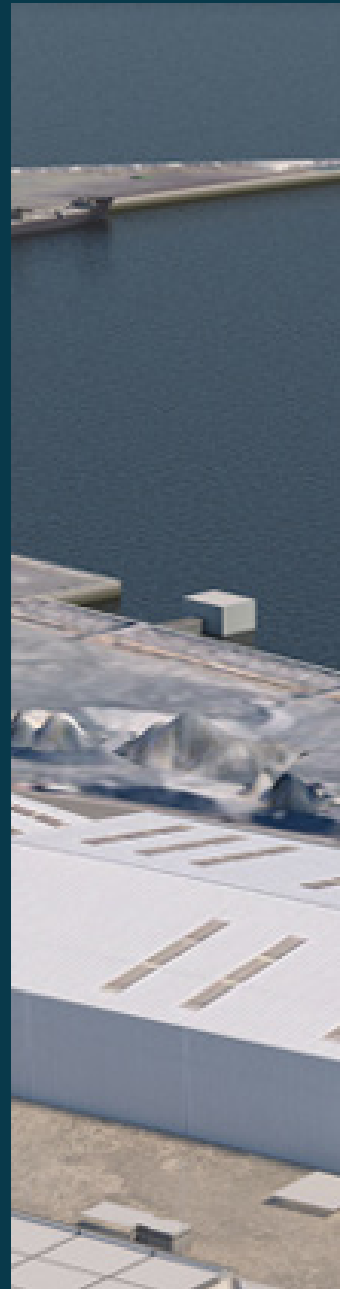
PLANNED

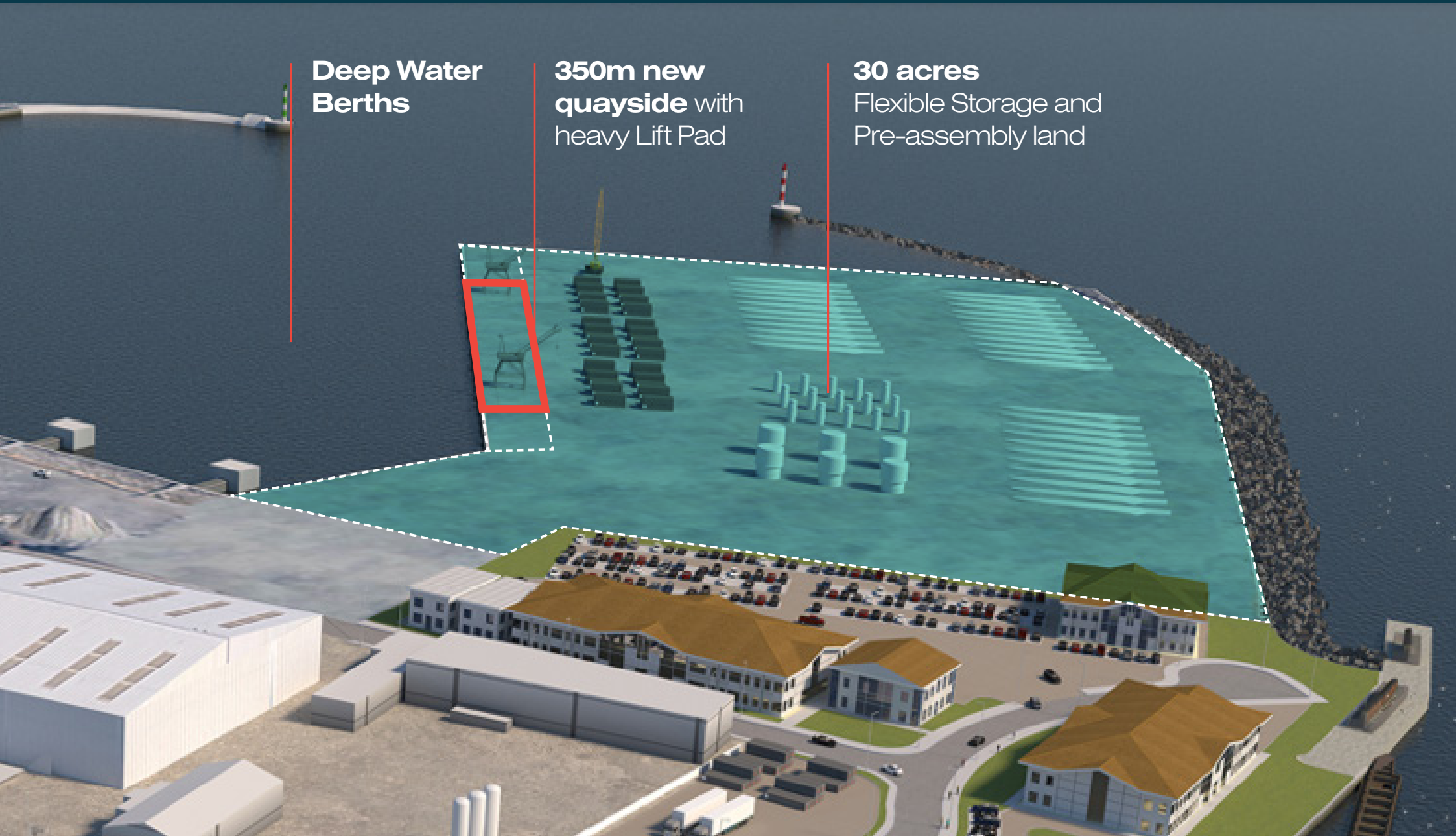
The New Southern Terminal

A game-changing investment, supporting the efficient delivery of major energy projects

The Port's development of the Southern Terminal will transform its capacity and capability to enable the handling of cargo destined for major projects.

It's a game-changing opportunity for developments across the region, offering no locks to navigate, less water depth restrictions and road congestion when compared to other ports on the east coast of England.





Deep Water Berths

350m new quayside with heavy Lift Pad

30 acres Flexible Storage and Pre-assembly land

Major Infrastructure Construction Support – Aggregates solutions

A vital logistics and distribution centre for aggregates and construction materials, playing a crucial role in supporting some of the most significant infrastructure projects across the UK, particularly in the South East region. With its strategic location, specialised facilities, and strong connections to the construction supply chain, the port is ideally positioned to meet the growing demand for aggregates and construction materials.



1.5m
tonnes of aggregates handled annually.



Deep water access.



24/7 access.



No transport restrictions





Key factors:

Close proximity to major infrastructure projects including nuclear and offshore developments such as cable routing and anti-scour

Advanced storage and handling facilities.

Streamlined supply chain.

Supporting major infrastructure projects.

Environmental and sustainability focused.

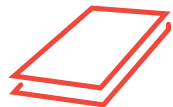
Who we work with:



Major Infrastructure Construction Support – Steel

With a proven track record in handling steel, Port of East Anglia, Great Yarmouth is a trusted partner for the construction and industrial sectors. Our port's location, advanced handling capabilities, and commitment to delivering materials on time and in perfect condition make us an essential part of the supply chain for critical infrastructure projects across the UK.

We understand the importance of reliability, efficiency, and expertise when it comes to handling steel and rebar. Whether you are working on a large infrastructure project or regional construction development or a regional construction development, our team is dedicated to ensuring that your materials are delivered with the care and precision you expect.



50,000 tonnes
of steel handled annually.



Ability to handle all vessel types.

Key factors:

Customised solutions for all construction needs.

On-site specialised storage facilities.

Expert teams to handle Steel products.

In-house supply chain.

Supporting major infrastructure projects.

Who we work with:





Who we work with:

Some of our partners include



The port supports Stema in servicing East Anglia's major infrastructure projects. By reducing road haulage distances, the port helps lower carbon emissions while enabling efficient delivery of construction materials.



For RWE, the port provides the flexibility and specialised equipment needed to streamline offshore wind operations, ensuring efficient maintenance and renewable energy production.





Selected as the Pre-assembly port for the EA2 project

The Port of East Anglia Great Yarmouth supports ScottishPower Renewables' 960MW East Anglia Two wind farm, providing pre-assembly for 64 turbines, including 192 Siemens Gamesa blades, before offshore installation in 2028.



With its deep-water harbour, the port accommodates Aggregate Industries' largest vessels, enabling a reliable supply of aggregates for critical projects.

State-of-the-art facilities for every requirement

Port of East Anglia, Great Yarmouth can accommodate a wide variety of cargo types, from heavy industrial goods to consumer products, making it a versatile hub for both domestic and international trade. The port's commitment to providing tailored logistics solutions for each customer ensures efficient, reliable service across every sector it serves.

With its modern infrastructure, flexible operations, and specialised handling capabilities, Great Yarmouth is well-positioned to meet the growing demands of the maritime and logistics industries, ensuring that every requirement is met with precision and care.





Shipping and marine services

The Port of East Anglia, Great Yarmouth is more than just a port—it's a full-service maritime hub designed to meet the complex needs of vessel operators, cargo owners, and shipping lines. Our comprehensive suite of marine services ensures that vessels calling at our port receive the highest level of care and operational support. From expert pilotage to state-of-the-art towage, our marine services are tailored to guarantee safety, efficiency, and seamless operations.

- **Vessel waste management and environmental services.**
- **Marine traffic control and vessel monitoring.**
- **Emergency response and marine safety.**
- **Pilotage:** Expert navigation for safe port entry.
- **Towage:** Support for efficient vessel handling.
- **Mooring services:** Safe and reliable berthing.
- **Bunkering services:** Fuelling your operations.
- **Vessel maintenance and repairs:** Keeping your fleet operational.

PortPlus+

Offered across each of our ports, PortPlus+ highlights what we do beyond exports and imports. Peel Ports Group is more than ports. We can provide solutions and logistics across the entire supply chain.

Keep all of your logistics solutions under one roof, Store, Process, Develop and Move with PortPlus+.

+Store

Safely store and protect your goods with flexible on-site warehousing space and on-demand capacity.



+Process

Let our experts take control of your cargo, with added-value handling and processing solutions.



+Move

Take advantage of our end to end cargo movement services, across road, rail and sea.



+Develop

Utilise our secure port locations with cost efficient and bespoke property options.





Skilled teams with sector expertise

- Robust health & safety culture.
- Specialist employees who are experts in key areas such as marine and cargo lifting and handling operations and NPORS.





Ensuring safe and secure operations

- Security measures: CCTV, 24/7 monitoring and on-site security guards.
- Compliance with ISPS and environmental regulations.



LEADING THE WAY

Our own net zero journey

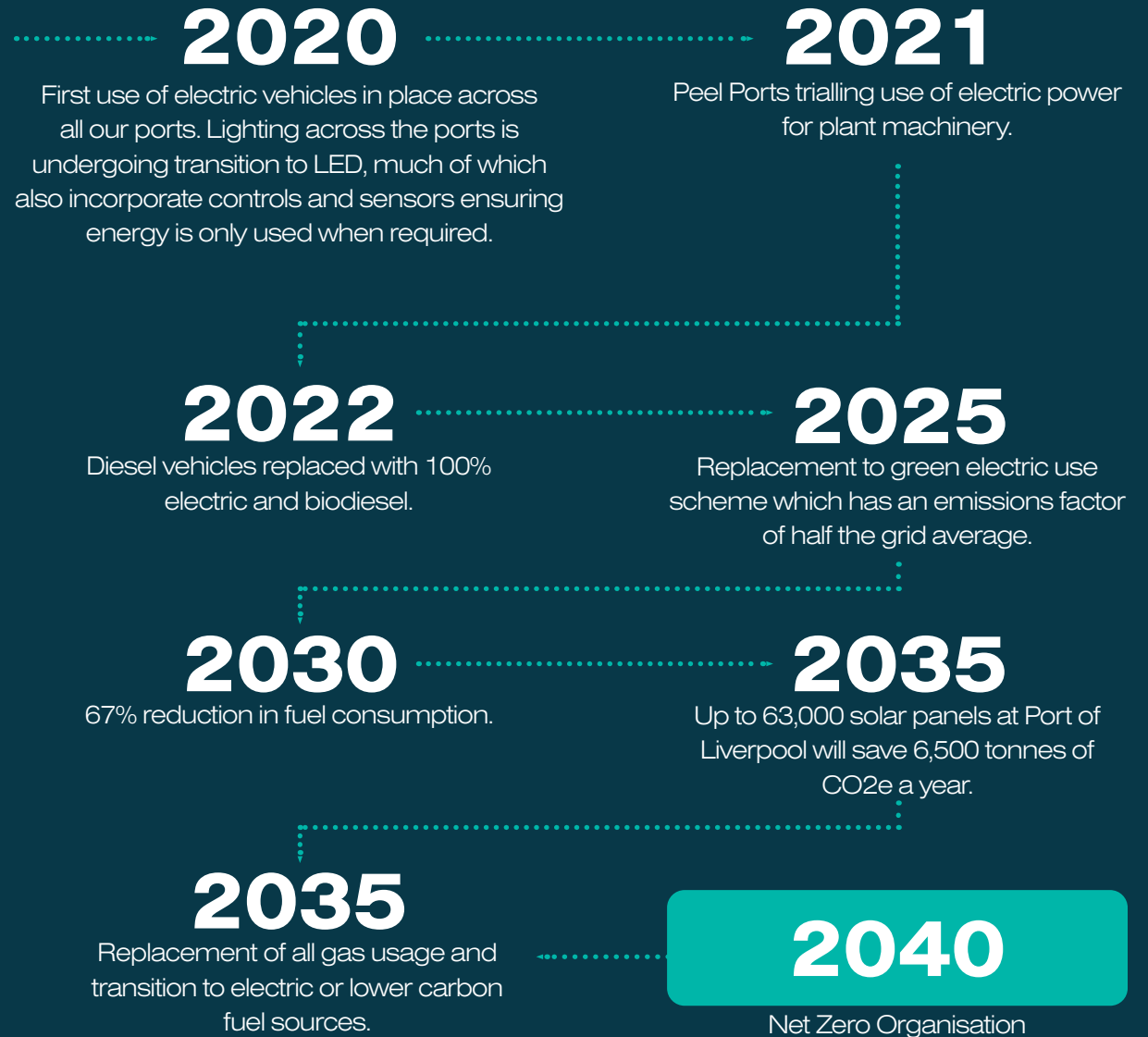
At Peel Ports Group, sustainability is at the heart of all we do. As one of the UK's largest port operators, and a major employer in the areas where we operate, we are fully aware of the role we need to play in driving a sustainable agenda.

On an environmental front, we've made an industry-leading commitment to become a net zero port operator by 2040, ten years ahead of UK government targets.

Since then, and just in the last three years, we have reduced our operational Scope 1 and 2 emissions by over 40%. Our approach and leadership in this area has been widely recognised by peers with a raft of industry awards and accolades.

NET ZERO
2040

ENABLING
THE FUTURE



Partner with Great Yarmouth

Get in touch to explore how we can support your business growth.
portofeastanglia.sales@peelports.com

Port of East Anglia, Great Yarmouth

Outer Harbour
South Beach Parade
Great Yarmouth
NR30 3GY

Phone Number - +44 (0)1493 335500

Head Office

Peel Ports Group
Head Office
Maritime Centre
Liverpool
L21 1LA

Phone Number - +44 (0)151 949 6000

Download

Your digital
copy here:



