



MERSEY DOCKS AND HARBOUR COMPANY LTD
 Captain Susan Cloggie-Holden MNM
 Group Harbour Master

River Mersey

LPR001_4_2026_004
Approaches to Alfred River
Entrance and Twelve Quays
Ro-Ro Terminal

DEPTHS
 Depths are in metres and are reduced to chart datum being 4.93m below Ordnance Datum (Newlyn), which is approximately the level of Lowest Astronomical Tide.

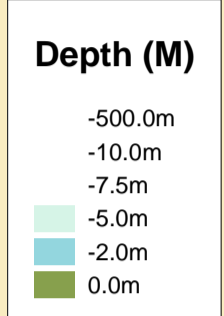
HEIGHTS
 Heights are in metres. Underlined figures show heights above Chart Datum.

POSITIONS
 Positions are referred to OSGB36 National Grid Datum.

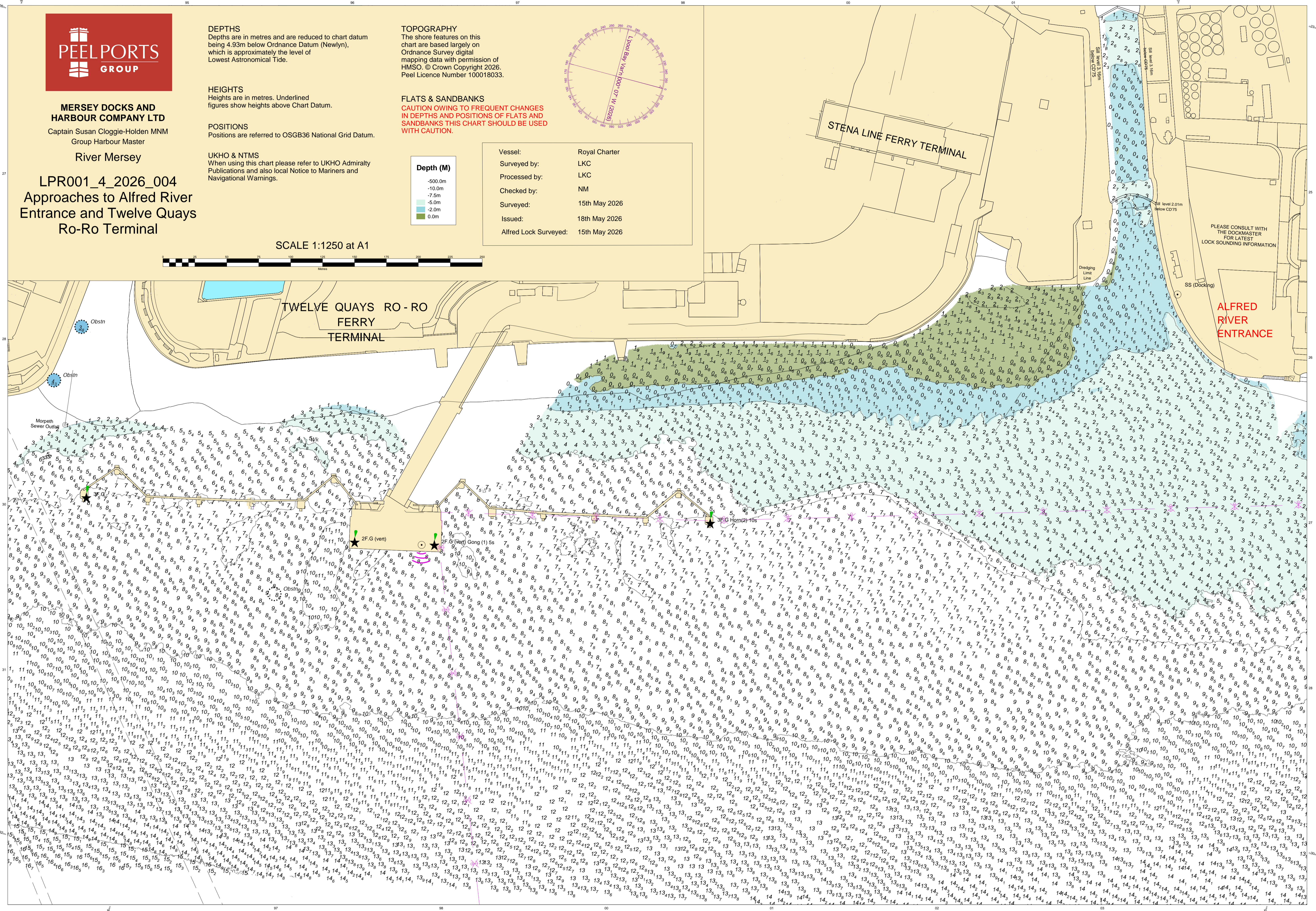
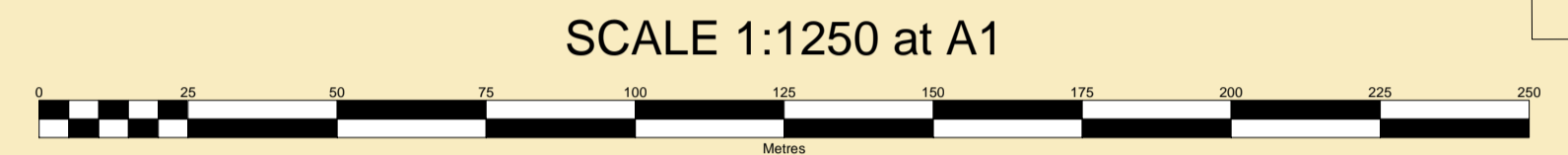
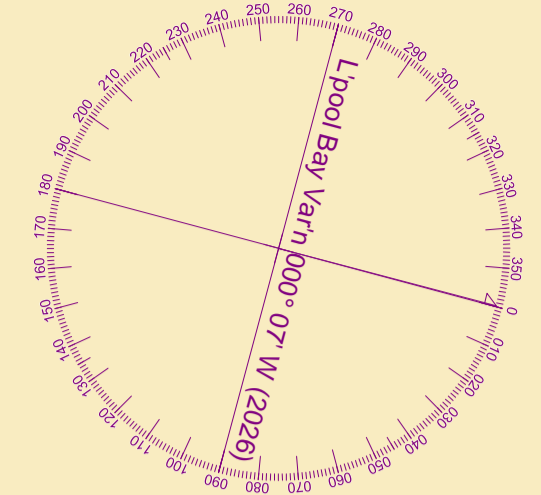
UKHO & NTMS
 When using this chart please refer to UKHO Admiralty Publications and also local Notice to Mariners and Navigational Warnings.

TOPOGRAPHY
 The shore features on this chart are based largely on Ordnance Survey digital mapping data with permission of HMSO. © Crown Copyright 2026. Peel Licence Number 100018033.

FLATS & SANDBANKS
CAUTION OWING TO FREQUENT CHANGES IN DEPTHS AND POSITIONS OF FLATS AND SANDBANKS THIS CHART SHOULD BE USED WITH CAUTION.



Vessel:	Royal Charter
Surveyed by:	LKC
Processed by:	LKC
Checked by:	NM
Surveyed:	15th May 2026
Issued:	18th May 2026
Alfred Lock Surveyed:	15th May 2026



PLEASE CONSULT WITH THE DOCKMASTER FOR LATEST LOCK SOUNDING INFORMATION

ALFRED RIVER ENTRANCE

TWELVE QUAYS RO-RO FERRY TERMINAL

STENA LINE FERRY TERMINAL

Obsn
 Obsn
 Morpeth Sewer Outfall

