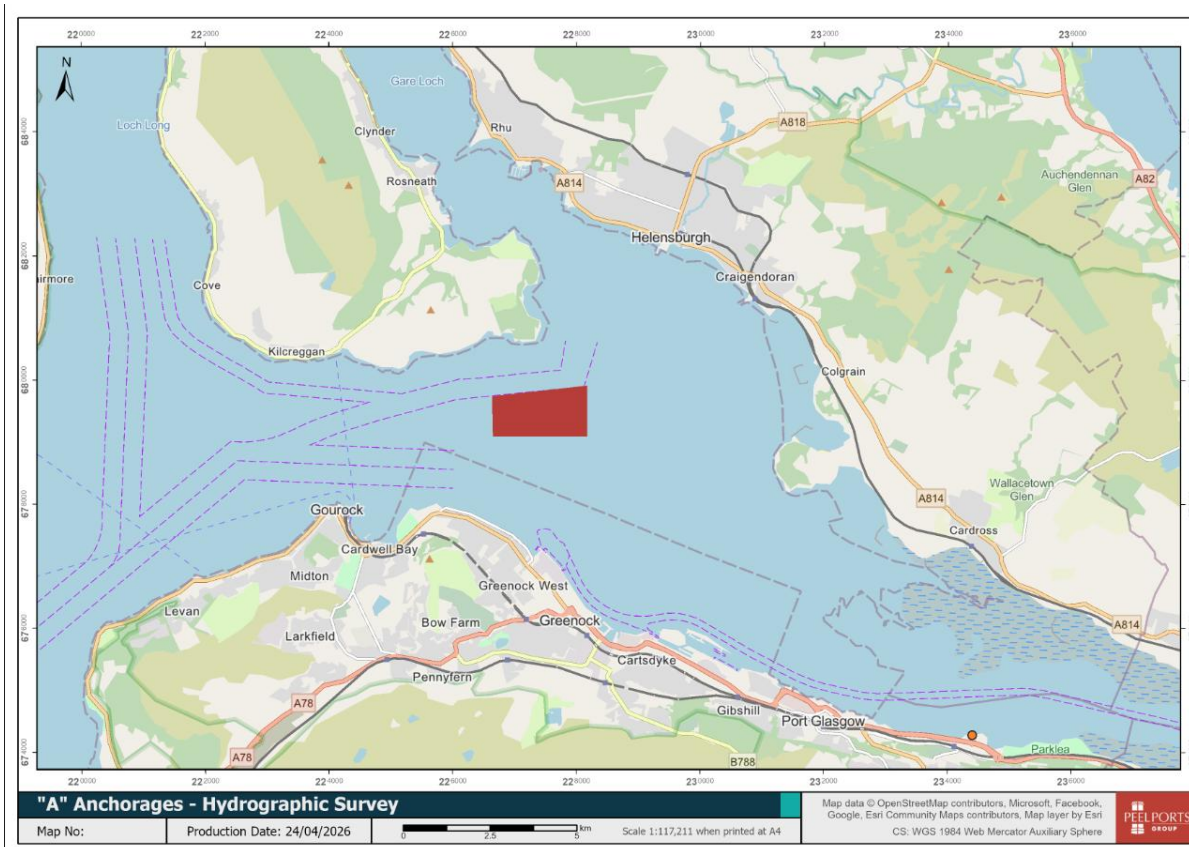


Mariners are advised that a hydrographic survey is planned of the “A” Anchorages, Firth of Clyde, between Rosneath Point and Greenock, for two weeks from 27th April. The survey will be conducted by the vessels Coastal Sensor, Coastal Sensor II or Marine Sensor which may be restricted in ability to manoeuvre during operational periods.

A listening watch will be maintained on VHF Ch12.



Coastal Sensor	Coastal Sensor II	Marine Sensor
		