

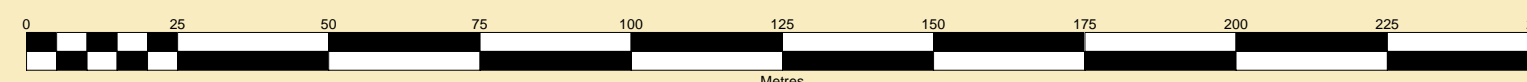
**MERSEY DOCKS AND HARBOUR COMPANY LTD**

Captain Susan Cloggie-Holden MNM  
Group Harbour Master

River Mersey

LPR001\_3\_2025\_007  
Langton River  
Entrance

SCALE 1:1250 at A1



**DEPTHS**

Depths are in metres and are reduced to chart datum being 4.93m below Ordnance Datum (Newlyn), which is approximately the level of Lowest Astronomical Tide.

**HEIGHTS**

Heights are in metres. Underlined figures show heights above Chart Datum.

**POSITIONS**

Positions are referred to OSGB36 National Grid Datum.

**UKHO & NTMS**

When using this chart please refer to UKHO Admiralty Publications and also local Notice to Mariners and Navigational Warnings.

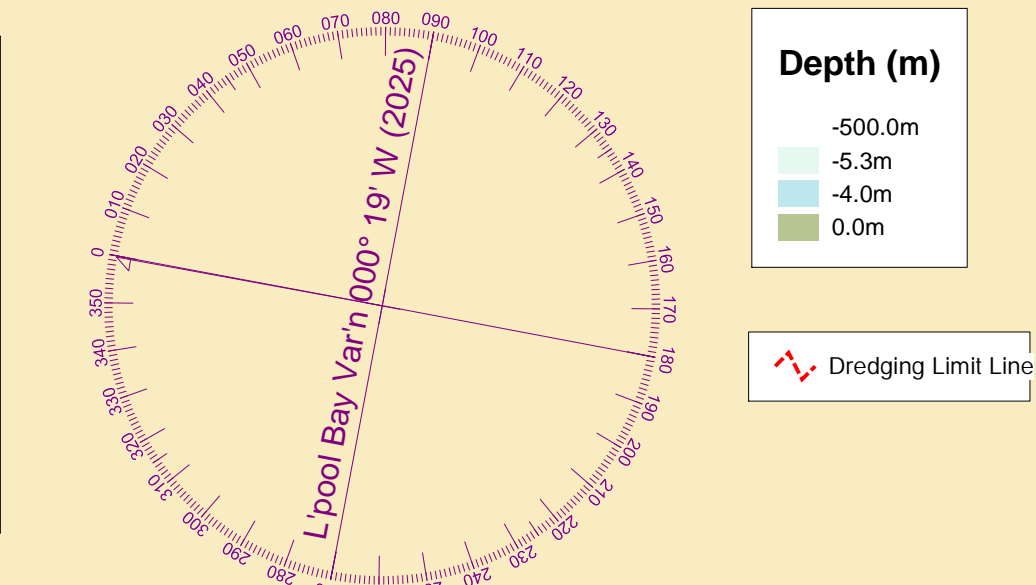
Vessel: Porth Wen  
Surveyed by: VO  
Processed by: VO  
Checked by: WLH  
Surveyed: 22nd July 2025  
Issued: 1st August 2025  
Lock Surveyed: 17th July 2025

**TOPOGRAPHY**

The shore features on this chart are based largely on Ordnance Survey digital mapping data with permission of HMSO. © Crown Copyright 2025. Peel Licence Number 100018033.

**FLATS & SANDBANKS**

**CAUTION OWING TO FREQUENT CHANGES IN DEPTHS AND POSITIONS OF FLATS AND SANDBANKS THIS CHART SHOULD BE USED WITH CAUTION.**



**Depth (m)**

-500.0m  
-5.3m  
-4.0m  
0.0m

Dredging Limit Line

**NOTE OBSTRUCTIONS IN THE VICINITY OF THE LOCK ENTRANCE/BULL NOSE**

Bathymetric data shows various historically known long standing seabed structures/artefacts thought possibly to be part of the original River Entrance construction which are now, in the interest of navigation, being shown as obstructions

