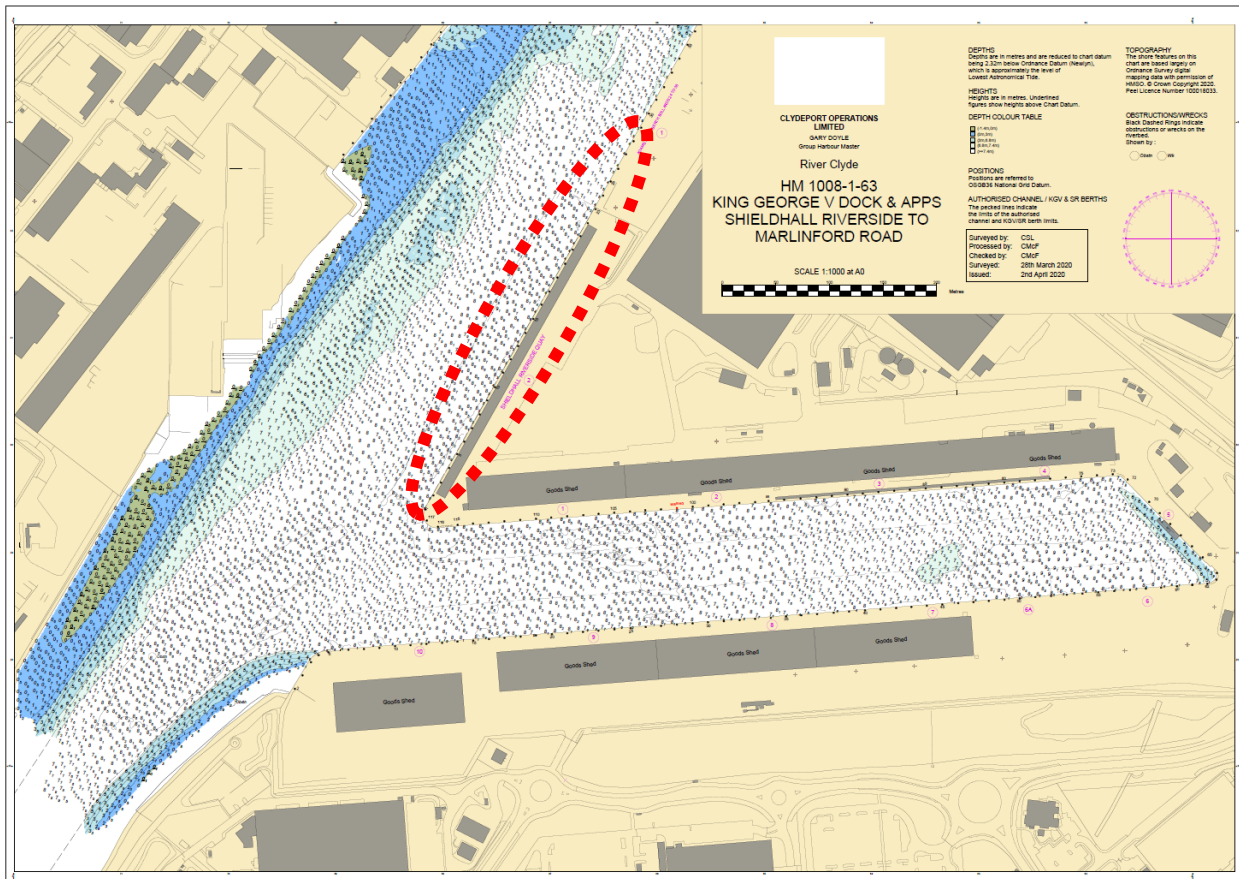
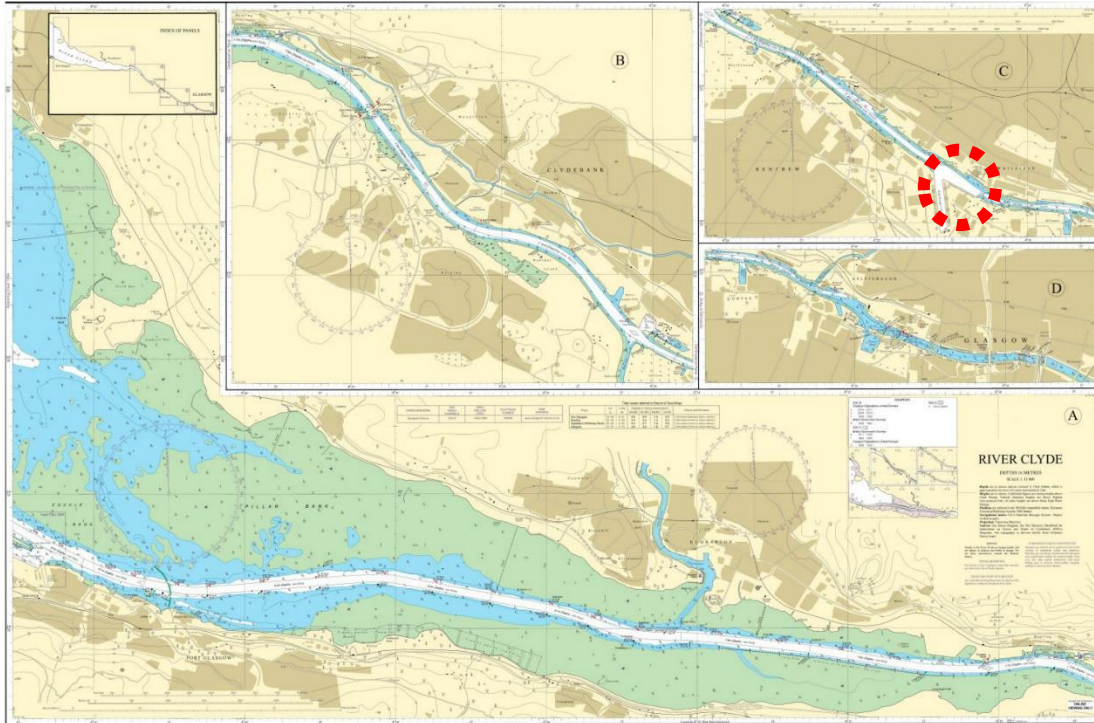


BERTH DATA SHEET

SHIELDHALL (Riverside Berth) - GLASGOW



BERTH DATA SHEET



SHIELDHALL (Riverside Berth) - GLASGOW

PARTICULARS/BASIC INFORMATION

Admiralty Chart No.	2007 Plan C	Survey Drawing No	HM-1008-1
Min. Depth Alongside	Refer Survey Drawing	Fendering	Yokohama fenders available on request
Quay Design	Solid concrete wharf	Avg Water Density	1005.5 kg/m ³
Latitude	55°52.29'N	Longitude	004°20.98'W
Quay length overall	320m	Eastings/Northings	415543, 6192605
No of berths	1	SWL Bollards	75T
Max vessel LOA	230m Vessels over 165m LOA are subject to additional planning & consultation.	Avg bollard spacing	15m
Max vessel beam	32m	Line of the berth	118°/298°
Air Draught restrictions	Erskine Bridge**	Quayside SWL	
ISPS Status	Compliant	Height of cope edge*	6.97m

*from Chart Datum

** up to 49.8m from MHWS unrestricted, up to 53.3m from MHWS 3 months' notice

QUAYSIDE FACILITIES – BY PRIOR ARRANGEMENT

Fresh Water	Yes	Shore Power	No
Port Waste	Yes	Cranes	Yes

TIDAL INFORMATION – BASED ON Glasgow 2020 predictions

HAT	5.3m	MHWS	4.8m
MHWN	3.9m	MLWN	1.8m
MLWS	0.7m	LAT	-0.2m
Comments			

BERTH OPERATOR

NAME	Peelports	CONTACT DETAILS	0141 445 2241
------	-----------	-----------------	---------------

COMMENTS:

This berth is used for bulk cargo, in particular animal feed or project cargo, eg wind turbine blades

Refer to Clydeport Towage Matrix for details of towage requirements for vessels to Shieldhall