



Great Yarmouth Eastern opportunity

peelports.com

Peel Ports Group
More Than Ports



Contents

Peel Ports Group	4
A hub for maritime, logistics, and renewable energy	6
Location and connectivity	8
Offshore energy	10
Aggregates	12
Steel and metals	14
Who we work with	16
State-of-the-art facilities for every requirement	18
Shipping and marine services	19
PortPlus+	20
Skilled teams with sector expertise	22
Unmatched safety and security standards	23
Our own net zero journey	24

Peel Ports Group

We are the UK's second largest port operator, safely handling 70 million tonnes of cargo each year, around 14% of the total market share.

2,000 employees across the UK and Ireland.

7 ports & **24** terminals.

14% UK market share.

70 million tonnes of cargo handled each year.

£1.5bn + invested in the last ten years.

7 statutory harbour authorities.

But we're much more than ports, as a major employer in the regions where we operate, we're creating trade opportunities, supporting jobs and developing skills for the future, all while reducing the impact of our operations on the environment.



As the UK's second largest port operator, we know a thing or two about supply chains and the safe, efficient transporting of goods.

But we do much more than that.

We're a leading enabler of port-centric solutions, which means our customers benefit from a range of in-port and on-demand services.

Peel Ports Group organises its terminals by clusters in different locations, these are:

- Clydeport
- London Medway
- Dublin
- Runcorn
- Liverpool
- Humber Bulks Terminal
- Manchester Ship Canal
- Ellesmere Port
- Heysham
- Birkenhead
- Great Yarmouth



Our Locations



A hub for maritime, logistics, and renewable energy.

Great Yarmouth port stands at the forefront of the UK's maritime and offshore energy industries, strategically positioned to serve both domestic and international markets. With its prime location on the east coast of England, the port provides an invaluable gateway to the North Sea's thriving offshore energy sector, as well as a key logistics hub for industries such as agriculture, construction, project cargo, and manufacturing.

The port's facilities, combined with its deep-water access, support a range of services including the import and export of goods, vessel repair, and the handling of heavy-lift cargoes. Great Yarmouth's role in the renewable energy market has also expanded significantly, with the port playing a pivotal role in supporting offshore wind projects, providing a vital base for operations, maintenance, and the storage and delivery of components.



2 million
tonnes of cargo annually.

Key facts and figures:

165
acres.

5 berths

11 meters
draft depth outer harbour.

6 meters
draft depth river port.

800 meters
berth space outer harbour.

3.5 kilometers
berth space river port.

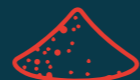
Commodities we handle:



Decommissioning



Agribulks



Aggregates / Bulks



RoRo



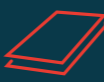
Project Cargo



Cruise



Offshore Wind



Steel



Energy Products



Timber



Location and connectivity

Strategically located to serve the rapidly growing offshore wind energy sector and a variety of industries across the UK, Great Yarmouth port is positioned on the east coast, offering direct access to key North Sea offshore wind farms. This makes it an ideal base for operations, maintenance, and logistics. The port's close proximity to wind farms reduces vessel transit times, ensuring efficient project management for offshore energy operators.

In addition to its role in renewable energy, Great Yarmouth is well-connected to major UK cities and industrial hubs, enhancing its logistics capabilities. The port benefits from excellent road and rail links, providing efficient access to London, Birmingham, Manchester, and other key cities. The new Herring Bridge crossing further improves connectivity by linking key areas around the port, reducing congestion, and facilitating faster movement of goods and services.

Great Yarmouth Port also boasts excellent access to the agricultural sector, being strategically located in East Anglia.



Proximity to Major Offshore Wind Farms



Herring Bridge Crossing



Offshore energy

Turbine assembly space:

65 acres

available for storage and assembly.

Supporting turbines of:

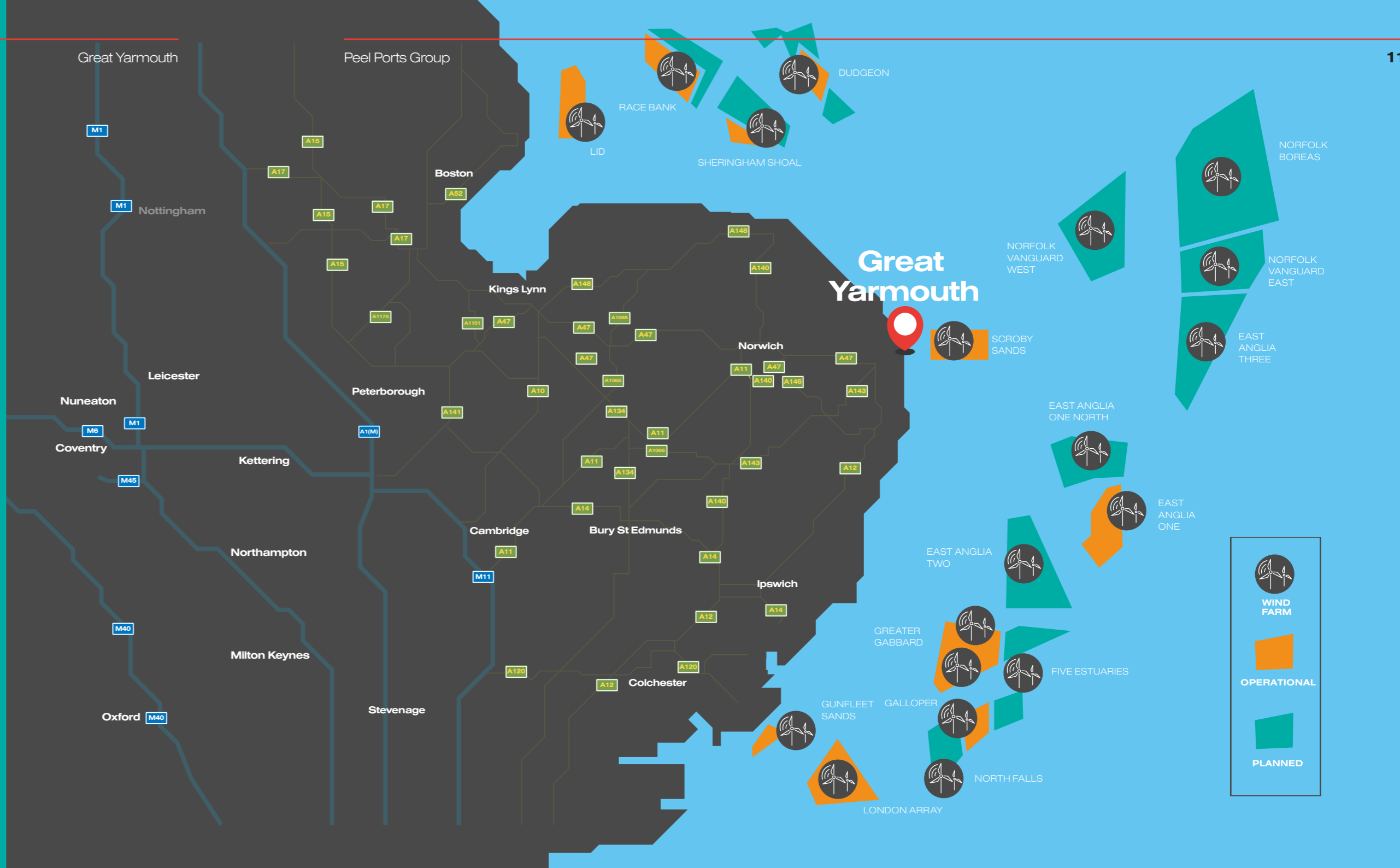
15MW+

Previous projects:

- Installation base for the Sheringham Shoal and Lincs offshore wind farms.
- Purpose-built turbine pre-assembly base for the Galloper offshore wind farm.
- Construction and installation base for the East Anglia ONE offshore wind farm.
- Equinor O&M base for offshore windfarms and operations centre for Hywind Scotland.
- RWE O&M base for Scroby Sands.

In-port capabilities

- Heavy lift pad.
- Jack up vessels / berth.
- Onsite crane pad.
- RoRo berths.
- No air draft restriction / locks.
- Multi user berth space.
- 24/7 operation.



Aggregates

A vital logistics and distribution centre for aggregates and construction materials, playing a crucial role in supporting some of the most significant infrastructure projects across the UK, particularly in the South East region. With its strategic location, specialised facilities, and strong connections to the construction supply chain, the port is ideally positioned to meet the growing demand for aggregates and construction materials.



1.5m
tonnes of aggregates handled annually.



Deep water access.



24/7 access.



No transport restrictions



Key factors:

Close proximity to major construction and infrastructure projects including Sizewell C.

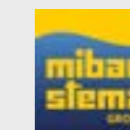
Advanced storage and handling facilities.

Streamlined supply chain.

Supporting major infrastructure projects.

Environmental and sustainability focused.

Who we work with:



Steel and Rebar

With a proven track record in handling steel, Great Yarmouth is a trusted partner for the construction and industrial sectors. Our port's location, advanced handling capabilities, and commitment to delivering materials on time and in perfect condition make us an essential part of the supply chain for critical infrastructure projects across the UK.

At Great Yarmouth, we understand the importance of reliability, efficiency, and expertise when it comes to handling steel and rebar. Whether you're working on a large infrastructure project like Sizewell C or a regional construction development, our team is dedicated to ensuring that your materials are delivered with the care and precision you expect.

 **50,000 tonnes**
of steel handled annually.

 **Ability to handle all vessel types.**

Key factors:

Customised solutions for all construction needs.

On-site specialised storage facilities.

Expert teams to handle Steel and Rebar.

In-house supply chain.

Supporting major infrastructure projects.

Who we work with:



Who we work with:

Some of our partners include



Great Yarmouth supports Stema in servicing East Anglia's major infrastructure projects. By reducing road haulage distances, the port helps lower carbon emissions while enabling efficient delivery of construction materials.



For RWE, Great Yarmouth provides the flexibility and specialised equipment needed to streamline offshore wind operations, ensuring efficient maintenance and renewable energy production.



Peel Ports Great Yarmouth supports ScottishPower Renewables' 960MW East Anglia Two wind farm, providing pre-assembly for 64 turbines, including 192 Siemens Gamesa blades, before offshore installation in 2028.



With its deep-water harbour, Peel Ports Great Yarmouth accommodates Aggregate Industries' largest vessels, enabling a reliable supply of aggregates for critical projects.

State-of-the-art facilities for every requirement

Great Yarmouth port can accommodate a wide variety of cargo types, from heavy industrial goods to consumer products, making it a versatile hub for both domestic and international trade. The port's commitment to providing tailored logistics solutions for each customer ensures efficient, reliable service across every sector it serves.

With its modern infrastructure, flexible operations, and specialised handling capabilities, Great Yarmouth is well-positioned to meet the growing demands of the maritime and logistics industries, ensuring that every requirement is met with precision and care.

Shipping and marine services

Peel Ports Great Yarmouth is more than just a port—it's a full-service maritime hub designed to meet the complex needs of vessel operators, cargo owners, and shipping lines. Our comprehensive suite of marine services ensures that vessels calling at our port receive the highest level of care and operational support. From expert pilotage to state-of-the-art towage, our marine services are tailored to guarantee safety, efficiency, and seamless operations.

- **Vessel waste management and environmental services.**
- **Marine traffic control and vessel monitoring.**
- **Emergency response and marine safety.**
- **Pilotage:** Expert navigation for safe port entry.
- **Towage:** Support for efficient vessel handling.
- **Mooring services:** Safe and reliable berthing.
- **Bunkering services:** Fuelling your operations.
- **Vessel maintenance and repairs:** Keeping your fleet operational.



PortPlus+

Offered across each of our ports, PortPlus+ highlights what we do beyond exports and imports. Peel Ports Group is more than ports. We can provide solutions and logistics across the entire supply chain.

Keep all of your logistics solutions under one roof, Store, Process, Develop and Move with PortPlus+.

+Store

Safely store and protect your goods with flexible on-site warehousing space and on-demand capacity.



+Process

Let our experts take control of your cargo, with added-value handling and processing solutions.



+Move

Take advantage of our end to end cargo movement services, across road, rail and sea.



+Develop

Utilise our secure port locations with cost efficient and bespoke property options.





Skilled teams with sector expertise

- Robust health & safety culture.
- Specialist employees who are experts in key areas such as marine and cargo lifting and handling operations and NPORS.



Ensuring safe and secure operations

- Security measures: CCTV, 24/7 monitoring and on-site security guards.
- Compliance with ISPS and environmental regulations.



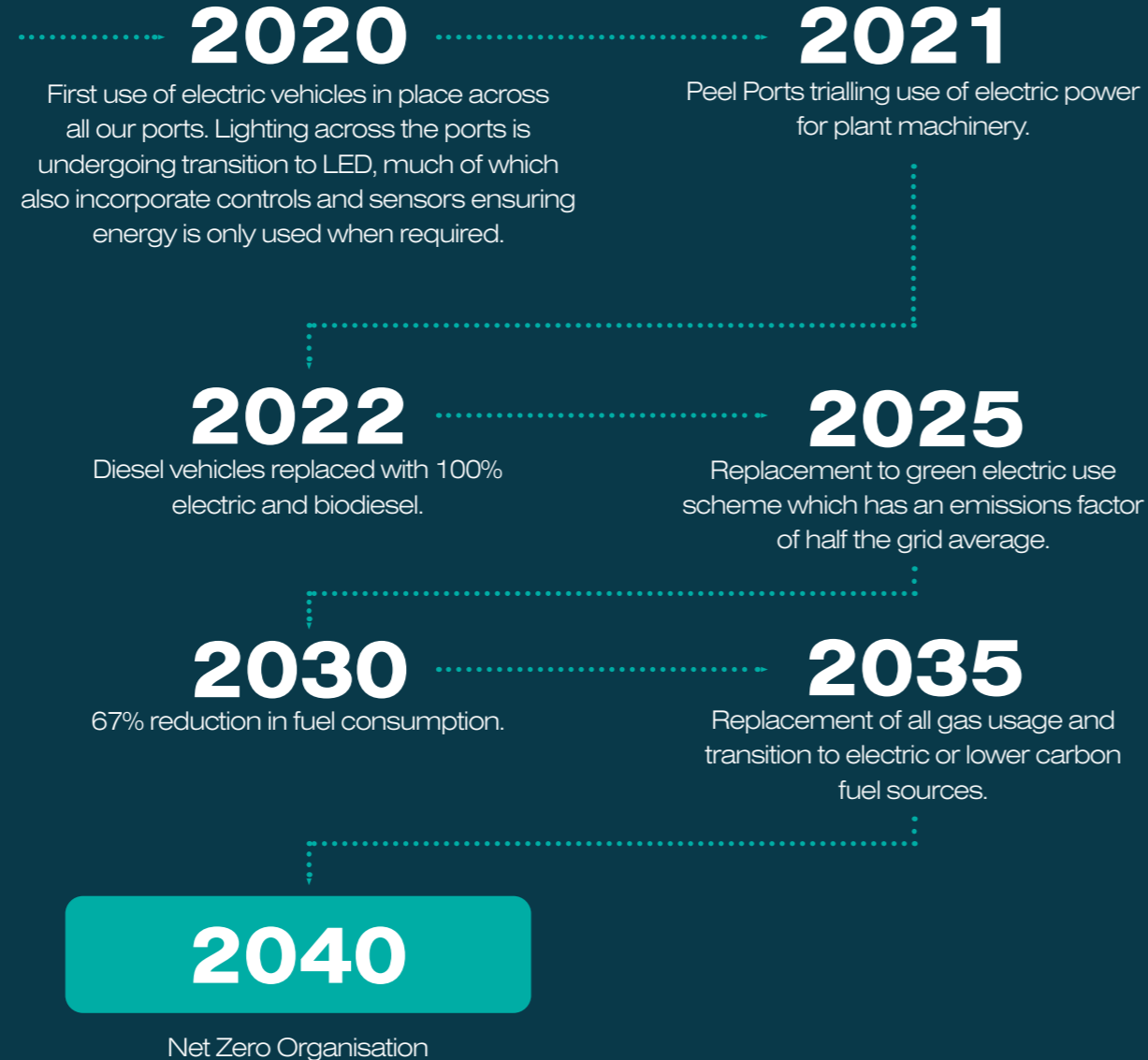
LEADING THE WAY

Our own net zero journey

At Peel Ports Group, sustainability is at the heart of all we do. As one of the UK's largest port operators, and a major employer in the areas where we operate, we are fully aware of the role we need to play in driving a sustainable agenda.

On an environmental front, we've made an industry-leading commitment to become a net zero port operator by 2040, ten years ahead of UK government targets.

Since then, and just in the last three years, we have reduced our operational Scope 1 and 2 emissions by over 40%. Our approach and leadership in this area has been widely recognised by peers with a raft of industry awards and accolades.



Partner with Great Yarmouth

Get in touch to explore how we can support your business growth.
greatyarmouthsales@peelports.com

Great Yarmouth
Outer Harbour
South Beach Parade
Great Yarmouth
NR30 3GY

Phone Number - +44 (0)1493 335500

Head Office
Peel Ports Group
Head Office
Maritime Centre
Liverpool
L21 1LA

Phone Number - +44 (0)151 949 6000

Download
Your digital copy here:

