



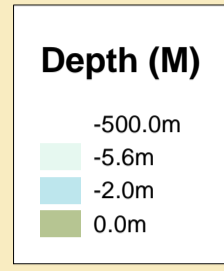
MERSEY DOCKS AND HARBOUR COMPANY LTD
 Captain Susan Cloggie-Holden MNM
 Group Harbour Master

River Mersey
 LPR001_2_2026_007
 Gladstone River Entrance

Vessel: Royal Charter
 Surveyed by: RK
 Processed by: RK
 Checked by: RK
 Surveyed: 30th June 2026
 Issued: 2nd July 2026
 Lock Surveyed: 5th June 2026

DEPTHS
 Depths are in metres and are reduced to chart datum being 4.93m below Ordnance Datum (Newlyn), which is approximately the level of Lowest Astronomical Tide.

HEIGHTS
 Heights are in metres. Underlined figures show heights above Chart Datum.

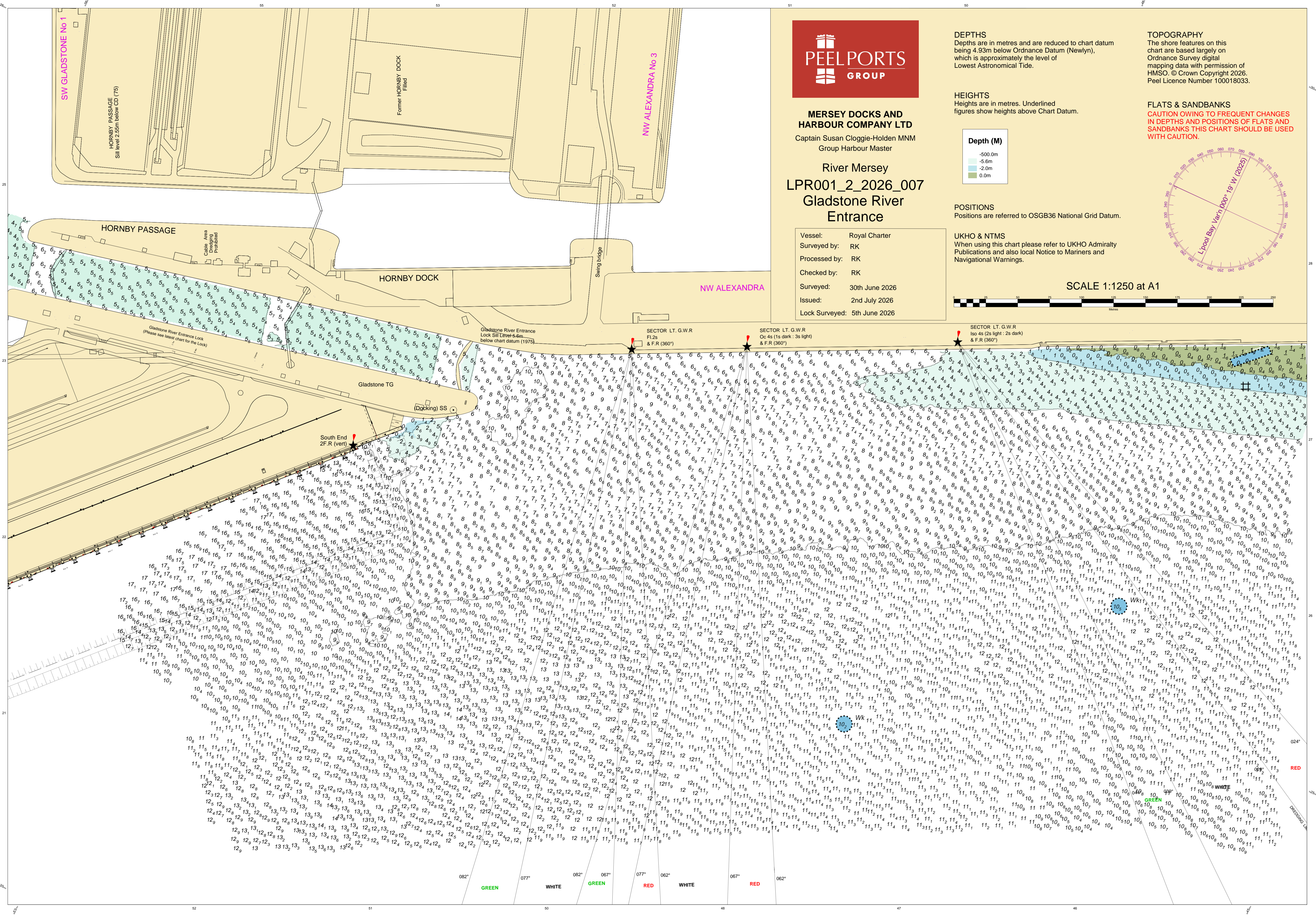
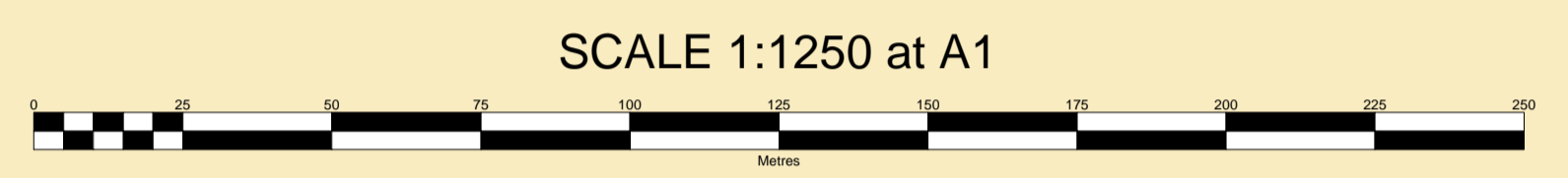
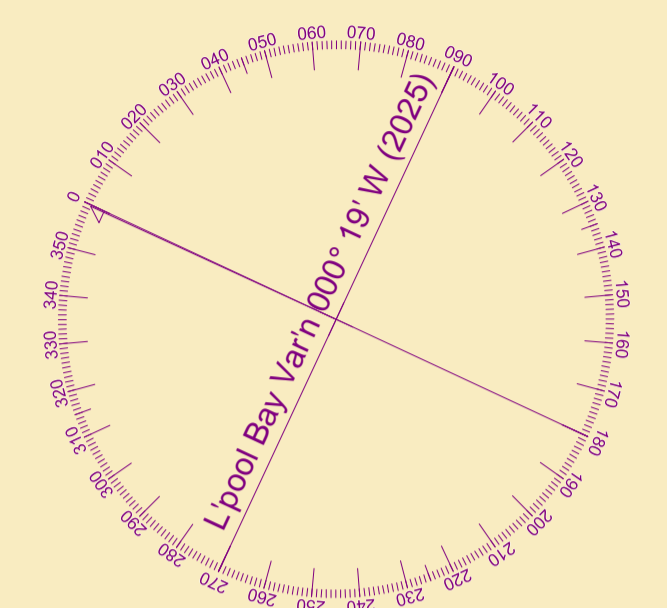


POSITIONS
 Positions are referred to OSGB36 National Grid Datum.

UKHO & NTMS
 When using this chart please refer to UKHO Admiralty Publications and also local Notice to Mariners and Navigational Warnings.

TOPOGRAPHY
 The shore features on this chart are based largely on Ordnance Survey digital mapping data with permission of HMSO. © Crown Copyright 2026. Peel Licence Number 100018033.

FLATS & SANDBANKS
CAUTION OWING TO FREQUENT CHANGES IN DEPTHS AND POSITIONS OF FLATS AND SANDBANKS THIS CHART SHOULD BE USED WITH CAUTION.



082° GREEN 077° WHITE 082° GREEN 067° RED 077° WHITE 067° RED 062°

RED
 WHITE
 GREEN
 CHERRY LAKE