

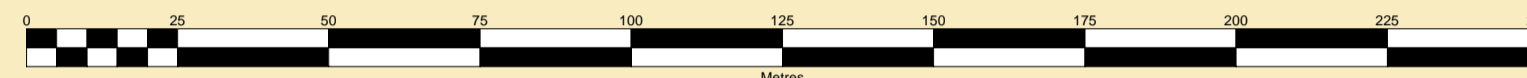


### MERSEY DOCKS AND HARBOUR COMPANY LTD

Gary Doyle  
Group Harbour Master

### River Mersey LPR001\_3\_2023\_004 Langton River Entrance

SCALE 1:1250 at A1



**DEPTHS**  
Depths are in metres and are reduced to chart datum being 4.93m below Ordnance Datum (Newlyn), which is approximately the level of Lowest Astronomical Tide.

**HEIGHTS**  
Heights are in metres. Underlined figures show heights above Chart Datum.

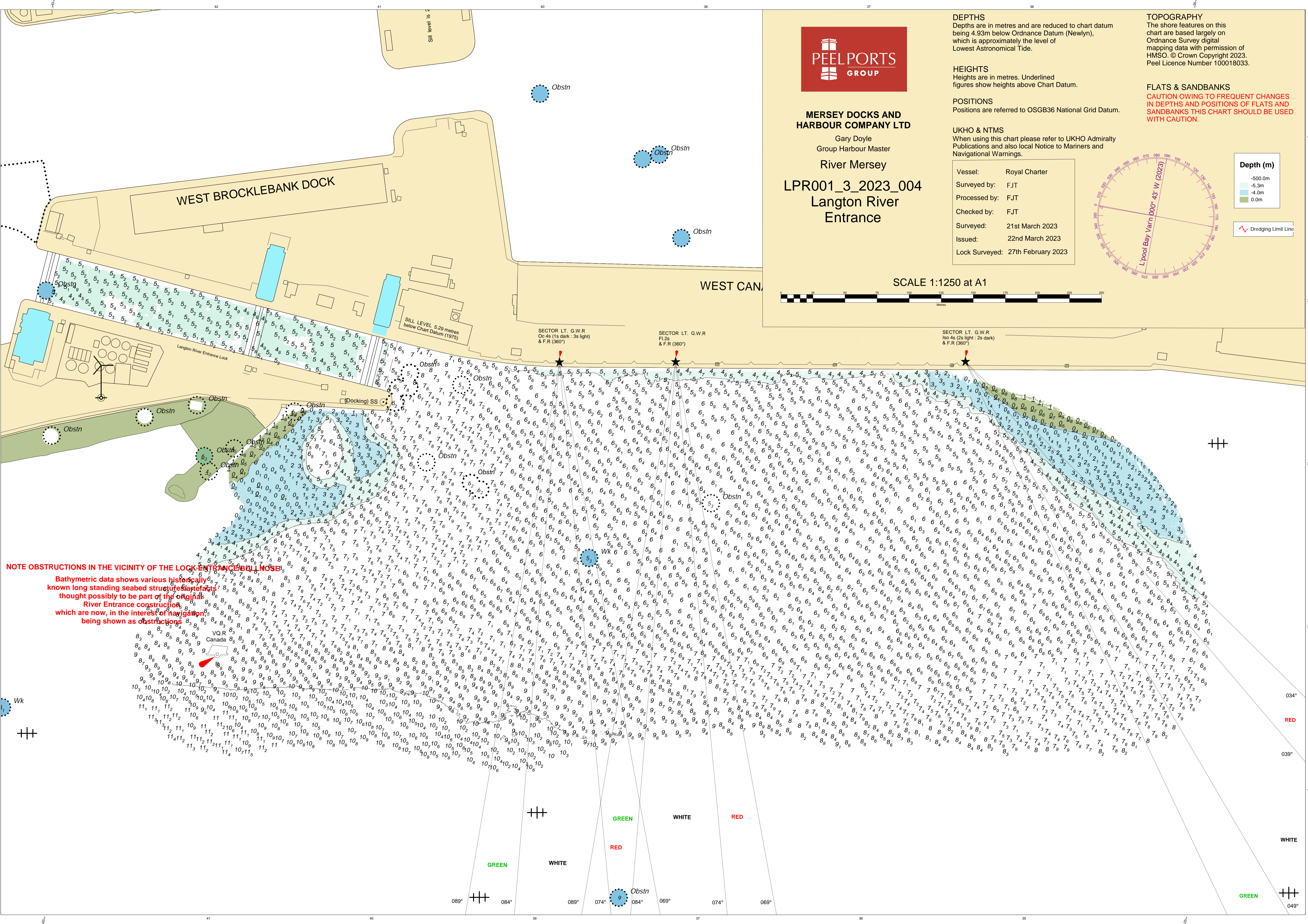
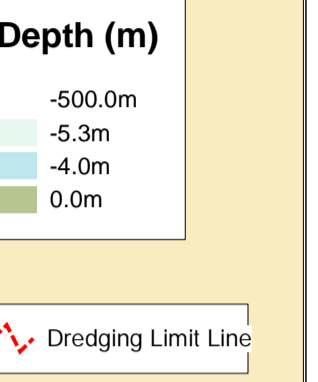
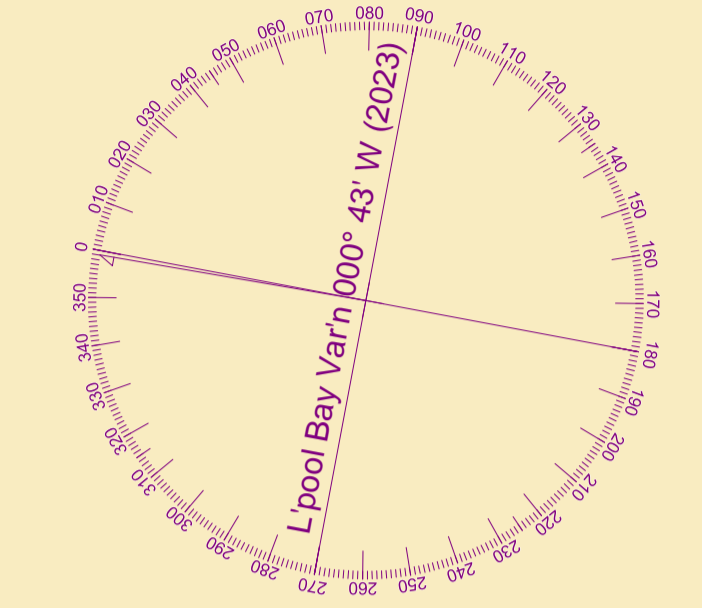
**POSITIONS**  
Positions are referred to OSGB36 National Grid Datum.

**UKHO & NTMS**  
When using this chart please refer to UKHO Admiralty Publications and also local Notice to Mariners and Navigational Warnings.

Vessel:	Royal Charter
Surveyed by:	FJT
Processed by:	FJT
Checked by:	FJT
Surveyed:	21st March 2023
Issued:	22nd March 2023
Lock Surveyed:	27th February 2023

**TOPOGRAPHY**  
The shore features on this chart are based largely on Ordnance Survey digital mapping data with permission of HMSO. © Crown Copyright 2023. Peel Licence Number 100018033.

**FLATS & SANDBANKS**  
**CAUTION OWING TO FREQUENT CHANGES IN DEPTHS AND POSITIONS OF FLATS AND SANDBANKS THIS CHART SHOULD BE USED WITH CAUTION.**



**NOTE OBSTRUCTIONS IN THE VICINITY OF THE LOCK ENTRANCE BULL NOSE**  
Bathymetric data shows various historically known long standing seabed structures/artefacts thought possibly to be part of the original River Entrance construction, which are now, in the interest of navigation, being shown as obstructions

089° 084° 089° 074° 084° 069° 074° 069°

034° RED  
039° WHITE  
049° GREEN