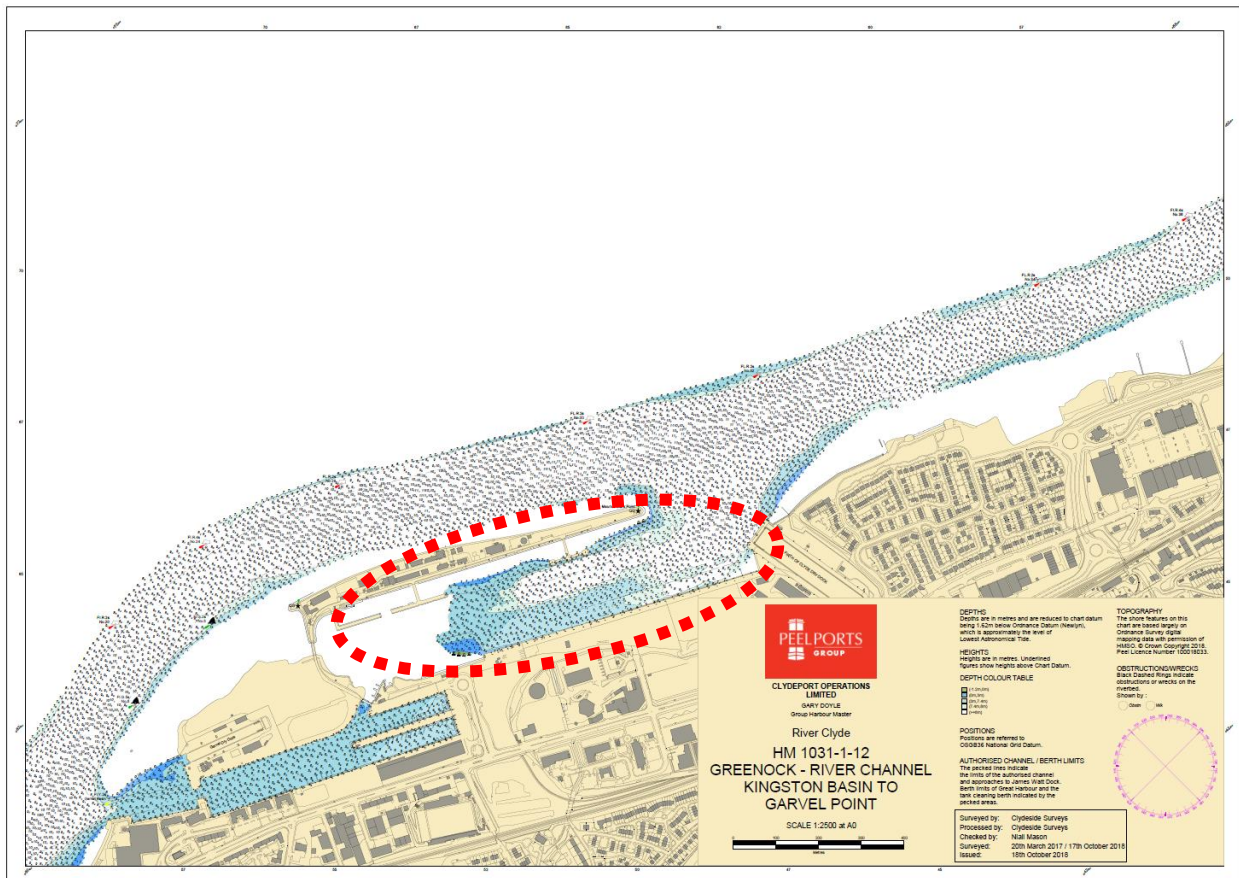
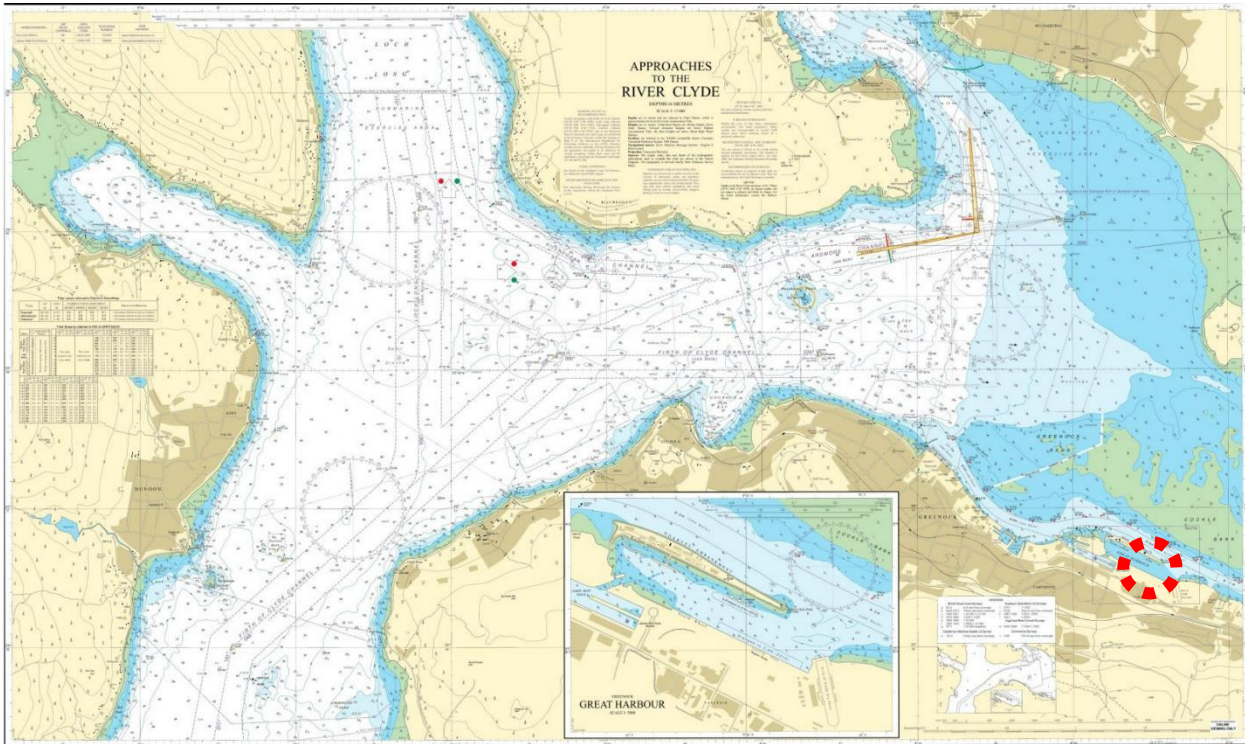


# BERTH DATA SHEET

## GREAT HARBOUR - GREENOCK



# BERTH DATA SHEET

## GREAT HARBOUR - GREENOCK



### PARTICULARS/BASIC INFORMATION

Admiralty Chart No.	1994	Survey Drawing No	HM-1107-1
Min. Depth Alongside	Refer Survey Drawing	Fendering	Some wooden piles
Quay Design	Solid stone	Avg Water Density	1018 kg/m <sup>3</sup>
Latitude	55°56.50'N	Longitude	004°43.00'W
Quay length overall (Bollards 1 to 21)	420m (repair quay) 45m (barge berth)	Eastings/Northings	392779, 6200918
No of berths	2	SWL Bollards design	100T on repair quay
Max vessel LOA	Draft restricted	Avg bollard spacing	21.5m (Bols 2 - 21)
Max vessel beam	N/A	Line of the berth	116°/296°
Air Draught restrictions	None	Quayside SWL	20 kN/m <sup>2</sup>
ISPS Status	Compliant	Height of cope edge*	5.8m

\*from Chart Datum

### QUAYSIDE FACILITIES – BY PRIOR ARRANGEMENT

Fresh Water	On request (metered)	Shore Power	No
Port Waste	Yes	Cranes	Mobile crane only

### TIDAL INFORMATION – BASED ON GREENOCK

HAT	<b>4.5m</b>	MHWS	<b>3.4m</b>
MHWN	<b>3.0m</b>	MLWN	<b>1.0m</b>
MLWS	<b>0.3m</b>	LAT	<b>-0.3m</b>
Comments			

### BERTH OPERATOR

NAME	Peelports	CONTACT DETAILS	01475 726171
------	-----------	-----------------	--------------

### COMMENTS:

Harbour tugs berth in Great Harbour and local Sea Cadets operate small craft in this area.

Repair Quay – Peel Ports bollards 1-21 inc.

Riskend – Bollards 21-34

Tank Cleaning Berth – Peelports and Peel Land and Property

Serco base operate from the East and West Jetties