

Dredging and Prohibited



**MERSEY DOCKS AND HARBOUR COMPANY LTD**

Captain Susan Cloggie-Holden MNM  
Group Harbour Master

River Mersey

LPR003\_2\_2026\_003  
Eastham Bar

**DEPTHS**  
Depths are in metres and are reduced to chart datum being 4.93m below Ordnance Datum (Newlyn), which is approximately the level of Lowest Astronomical Tide.

**HEIGHTS**  
Heights are in metres. Underlined figures show heights above Chart Datum.

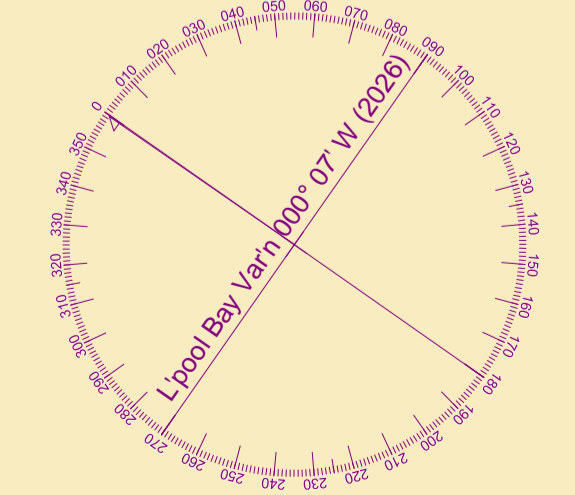
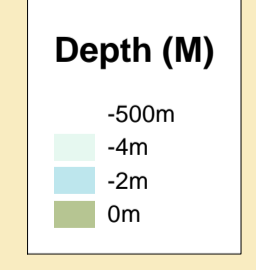
**POSITIONS**  
Positions are referred to OSGB36 National Grid Datum.

**UKHO & NTMS**  
When using this chart please refer to UKHO Admiralty Publications and also local Notice to Mariners and Navigational Warnings.

**TOPOGRAPHY**  
The shore features on this chart are based largely on Ordnance Survey digital mapping data with permission of HMSO. © Crown Copyright 2026. Peel Licence Number 100018033.

**FLATS & SANDBANKS**  
**CAUTION OWING TO FREQUENT CHANGES IN DEPTHS AND POSITIONS OF FLATS AND SANDBANKS THIS CHART SHOULD BE USED WITH CAUTION.**

Vessel: Royal Charter  
Surveyed by: RK  
Processed by: RK  
Checked by: RK  
Surveyed: 17th June 2026  
Issued: 18th June 2026



SCALE 1:2500 at A1

