

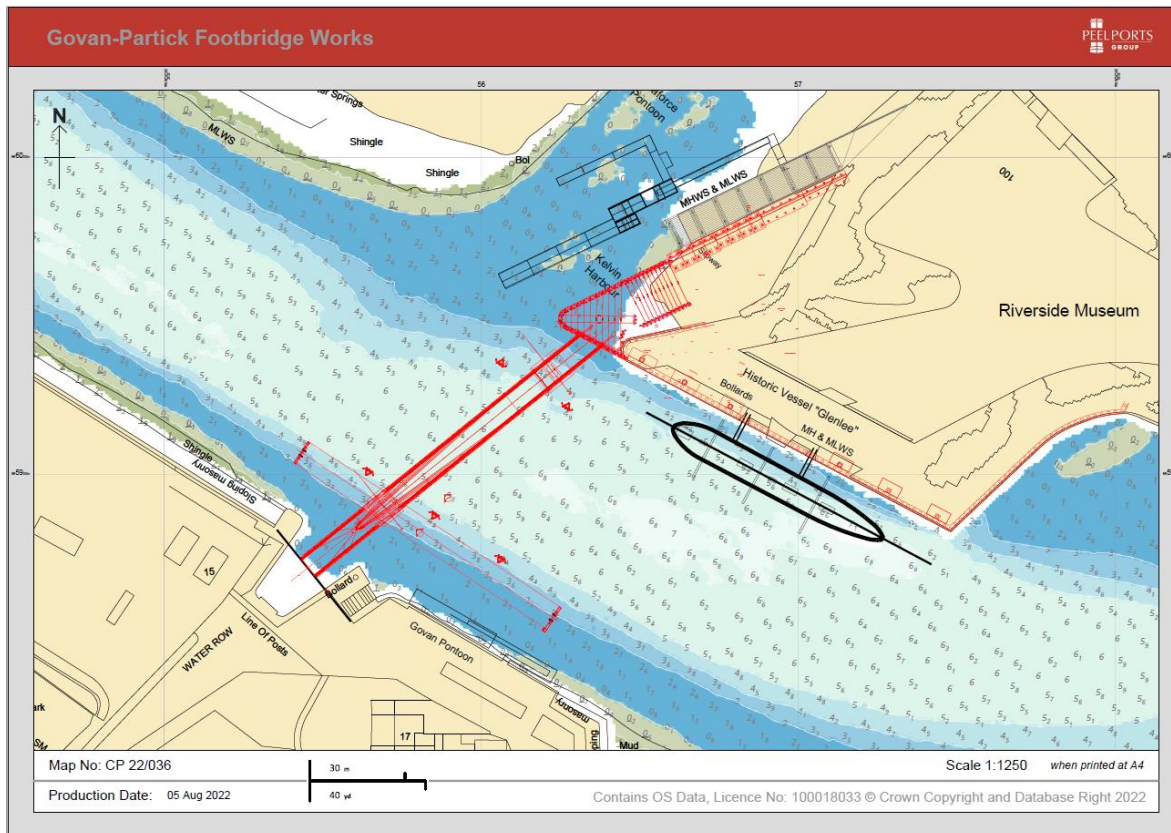
NOTICE TO MARINERS No 69/22 RIVER CLYDE – GOVAN TO PARTICK FOOTBRIDGE PILING WORKS

Chart 2007 Plan D

Mariners are advised that piling works associated with building a new opening footbridge across the River Clyde between Govan and Partick are planned from Monday 15th August for a period of approximately 3 months.

The piling works at Pointhouse Quay are the first stage of constructing an extension to the quay wall and this is indicated in red on the drawing below. This work will be conducted entirely from landside.

In addition, new fenders and bridge locking piles will be installed, also indicated in red. This work will be conducted from the barge CW-6 supported by workboat OSCAR. The barge will remain in position at each location and outwith the navigable channel throughout the marine piling works.



Mariners are requested to navigate with caution in this area. All vessels will maintain a listening watch on VHF Ch 12.

Estuary Radio may be contacted on VHF Ch 12 or on ☎ 0151 949 6651.

OSCAR



BARGE CW-6

