



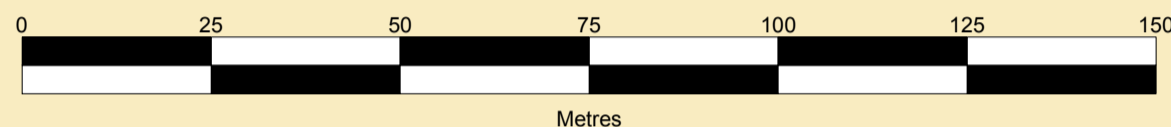
**PORT OF SHEERNESS LIMITED**

GARY DOYLE  
Group Harbour Master

River Medway

3132\_22\_001  
ISLE OF GRAIN  
THAMESPORT  
(LONDON) LTD.

SCALE 1:1000 at A1



**DEPTHS**  
Depths are in metres and are reduced to chart datum using 2.80m for Chatham and 2.90m for Sheerness below OD(N), with linear interpolation along channel centre line.

**HEIGHTS**  
Heights are in metres. Underlined figures show heights in meters above Chart Datum.

**DEPTH COLOUR TABLE**

- (-1.5m,0m)
- (0m,9m)
- (9m,11m)
- (11m,13m)
- (>=13m)

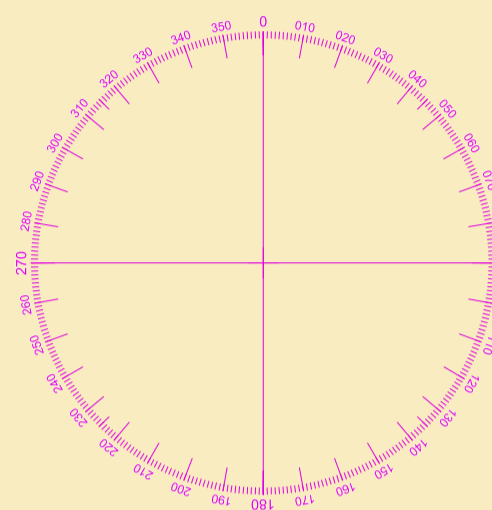
**POSITIONS**  
Positions are referred to OSGB36 National Grid Datum.

**BERTH LIMITS**  
The pecked lines indicate the berths limits of 'Thamesport'.

Surveyed by:	NM/WLH
Processed by:	NM
Checked by:	NM
Surveyed:	29th June 2022
Issued:	7th July 2022

**NOTES**  
While every care has been taken in the preparation of the information relating to the soundings shown on this chart, **PEEL PORTS MEDWAY** make no warranty as to the accuracy and will not accept any responsibility whatsoever arising from errors and omissions or for any consequence arising therefrom.

**TOPOGRAPHY**  
The shore features on this chart are based largely on Ordnance Survey digital mapping data with permission of HMSO. © Crown Copyright 2022. Peel Licence Number 100018033.



ISLE OF GRAIN

THAMESPORT UPPER

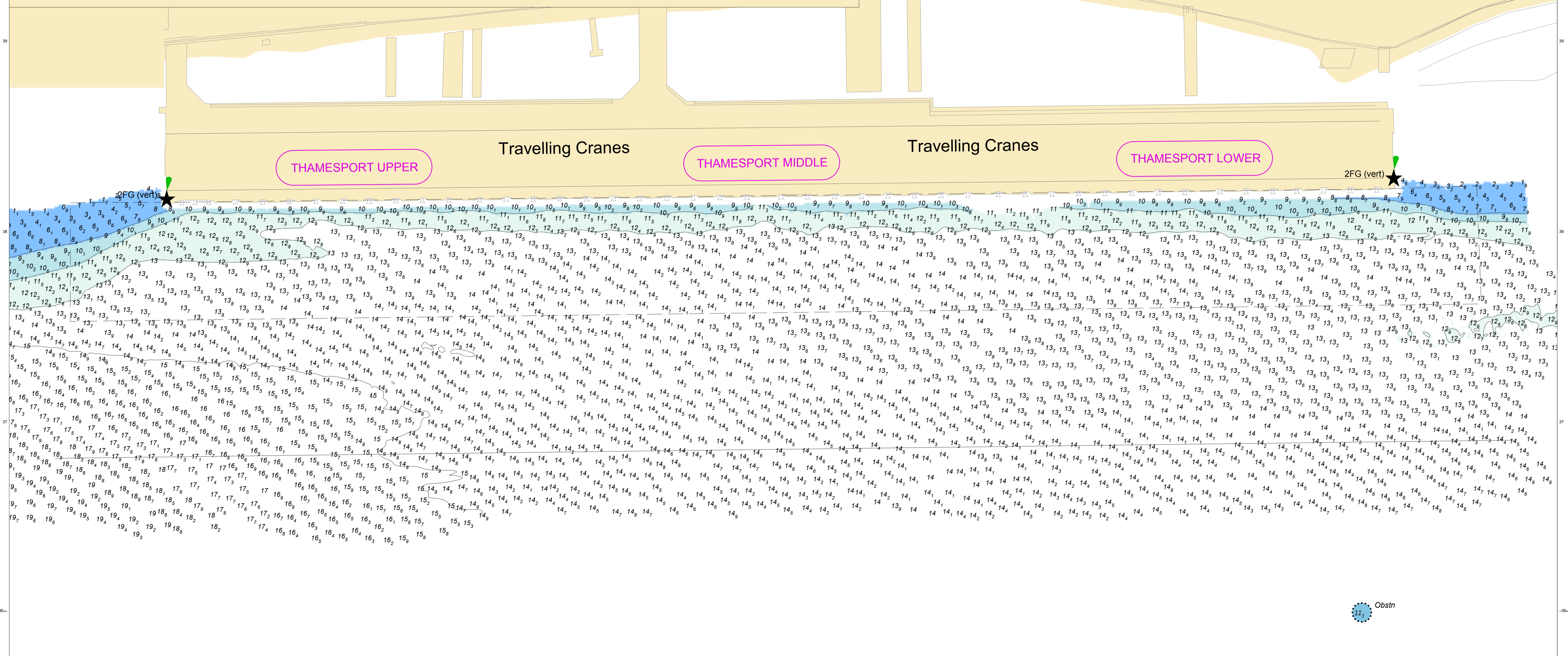
Travelling Cranes

THAMESPORT MIDDLE

Travelling Cranes

THAMESPORT LOWER

2FG (vert)



Obstr