



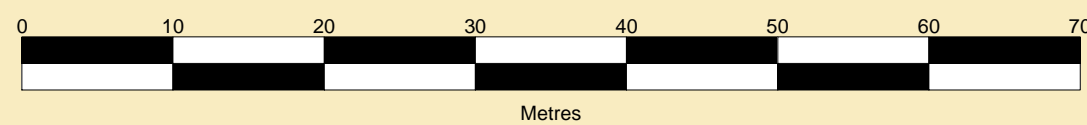
**PORT OF SHEERNESS LIMITED**

Gary Doyle  
Group Harbour Master

River Medway

1599\_1\_23\_001  
**CHATHAM REACH  
EUROWHARF**

SCALE 1:500 at A1



**DEPTHS**  
Depths are in metres and are reduced to chart datum being 2.80m below Ordnance Datum (Newlyn), which is approximately the level of Lowest Astronomical Tide.

**HEIGHTS**  
Heights are in metres. Underlined figures show heights in meters above Chart Datum.

**DEPTH COLOUR TABLE**

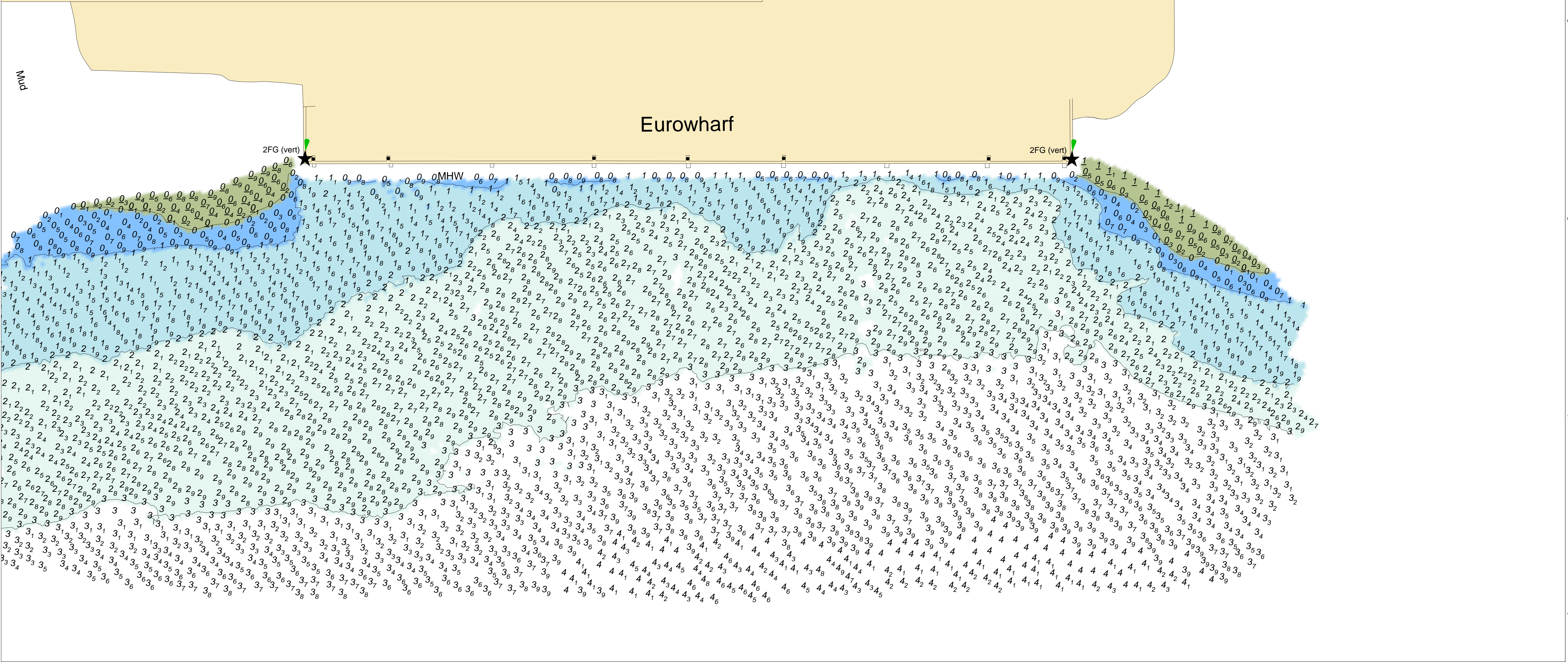
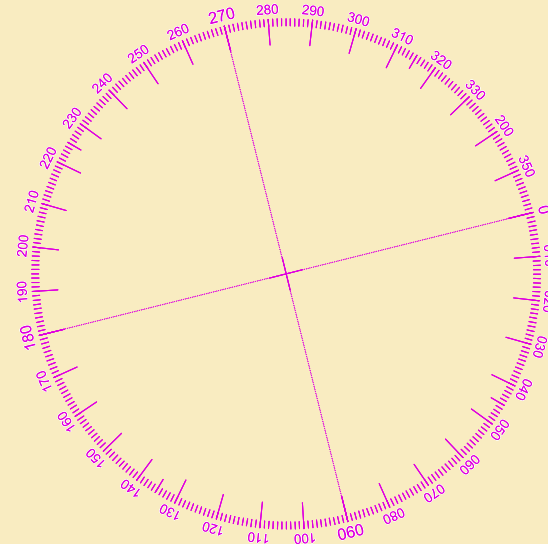
- (-1.5m,0m)
- (0m,1m)
- (1m,2m)
- (2m,3m)
- (>=3m)

**POSITIONS**  
Positions are referred to OSGB36 National Grid Datum.

Surveyed by:	CSL
Processed by:	CSL
Checked by:	RK
Surveyed:	21st January 2023
Issued:	24th January 2023

**NOTES**  
While every care has been taken in the preparation of the information relating to the soundings shown on this chart, PEEL PORTS MEDWAY make no warranty as to the accuracy and will not accept any responsibility whatsoever arising from errors and omissions or for any consequence arising therefrom.

**TOPOGRAPHY**  
The shore features on this chart are based largely on Ordnance Survey digital mapping data with permission of HMSO. © Crown Copyright 2023. Peel Licence Number 100018033.



2FG (vert)

OMHW

2FG (vert)

**Eurowharf**