

**MERSEY DOCKS AND HARBOUR COMPANY LTD**

Captain Susan Cloggie-Holden MNM  
Group Harbour Master

Liverpool Channel

LPC006\_4A\_2026\_001  
New Brighton Shoal  
Mid River High

**DEPTHS**  
Depths are in metres and are reduced to chart datum being 4.93m below Ordnance Datum (Newlyn), which is approximately the level of Lowest Astronomical Tide.

**HEIGHTS**  
Heights are in metres. Underlined figures show heights above Chart Datum.

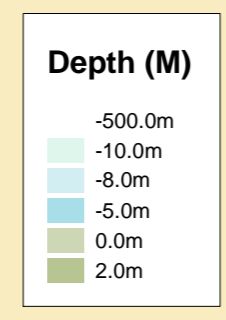
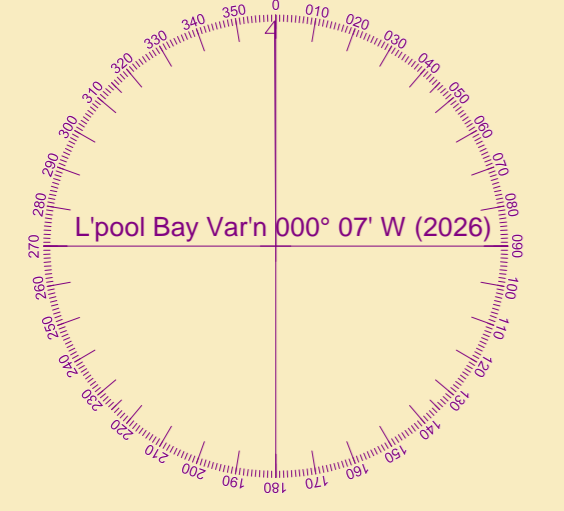
**POSITIONS**  
Positions are referred to OSGB36 National Grid Datum.

**UKHO & NTMS**  
When using this chart please refer to UKHO Admiralty Publications and also local Notice to Mariners and Navigational Warnings.

**TOPOGRAPHY**  
The shore features on this chart are based largely on Ordnance Survey digital mapping data with permission of HMSO. © Crown Copyright 2026. Peel Licence Number 100018033.

**FLATS & SANDBANKS**  
**CAUTION OWING TO FREQUENT CHANGES IN DEPTHS AND POSITIONS OF FLATS AND SANDBANKS THIS CHART SHOULD BE USED WITH CAUTION.**

Vessel:	Royal Charter
Surveyed by:	WLH
Processed by:	WLH
Checked by:	WLH
Surveyed:	18th June 2026
Issued:	22nd June 2026



SCALE 1:1250 at A1

