

NOTICE TO MARINERS

№54 – 2022

PORT OF LIVERPOOL

LIVERPOOL BAY – TOWED STREAMER SEISMIC SURVEY (2)

NOTICE IS HEREBY GIVEN that a towed streamer seismic survey is being undertaken in Liverpool Bay by the vessel *SW Bly*. Details of the *SW Bly*, its towed streamer and support vessels are supplied in the accompanying notice issued by Shearwater GeoServices Limited.

All going well, from 6 May 2022, the *SW Bly* will undertake surveys within the Port Limits to the west of the Bar Light Float and to the north of the southern designated anchorages. The survey lines will run either east–west or west–east and will be timed around low water periods.

At certain times, the survey lines will pass through the northern designated anchorages. Mersey VTS will advise vessels if they are required to vacate this anchorage to enable a survey run.

A Liverpool Pilot will be on board the *SW Bly* whilst these surveys are performed. The Pilot will be embarked and disembarked in the vicinity of Jordans Spit west cardinal mark.

The *SW Bly* is restricted in its ability to manoeuvre, and all vessels must maintain a suitable distance from this vessel and its towed streamer. Crossing and overtaking manoeuvres must be arranged bridge-to-bridge between the Pilot on board the *SW Bly* and the other vessel.

This Notice will remain in force until completion of the survey lines in this area of the Port.

MOM/782/088/L002a

6 May 2022

Towed Streamer Seismic Survey – Hamilton North, Liverpool Bay

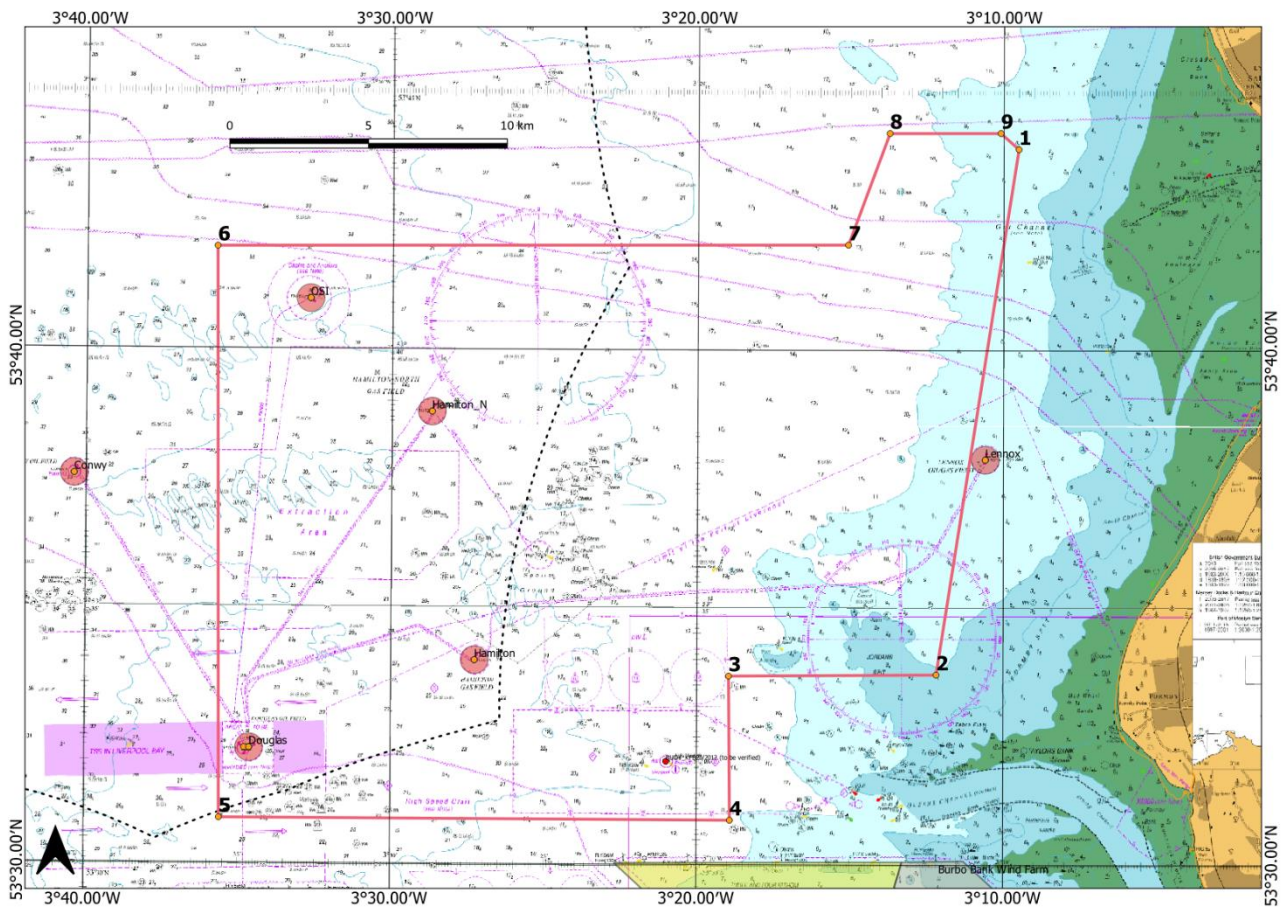
Notice to Mariners

1. Activity

A 3D Seismic Survey will be carried out in the Liverpool Bay area of the Eastern Irish Sea.

Survey operations will be centered around the area of the ‘Hamilton and Lennox gas fields’ and will be carried out by the Seismic Survey Vessel ‘SW BLY’ supported on site by the support vessel ‘OCEAN DON’ and the Scout / Guard vessels ‘LADY HELEN’ and ‘JULIA ANNE’.

The extent of the Working Area around Hamilton and Lennox is shown in Figure 1.



1	53°43.909'N	003°09.506'W
2	53°33.694'N	003°12.184'W
3	53°33.660'N	003°18.962'W
4	53°30.859'N	003°18.912'W
5	53°30.863'N	003°35.589'W
6	53°41.973'N	003°35.751'W
7	53°42.046'N	003°15.088'W
8	53°44.217'N	003°13.737'W
9	53°44.223'N	003°10.098'W
CRS:	WGS84	

Figure 1: Hamilton and Lennox Working Area (WGS84)

2. Dates

Operations in this area are expected to take place:

Start Date: 5th May 2022

Estimated Completion Date: 15th June 2022

3. Safe Clearances, Navigation Features and Safety Notes for Mariners

At all times while on-site the survey vessel 'SW BLY' will be operating as a vessel of 'RESTRICTED MANOEUVRABILITY' towing FOUR submerged seismic cables at a length of 1.2 Nautical Miles astern.

A clearance of 1 Nautical Mile is requested across the bow and down both sides and a clearance of 2 Nautical Miles across the stern of the vessel.


SW BLY will display appropriate lights and shapes while surveying.

The vessel and front and tail of the outer seismic cables will be marked by AIS.


The tailbuoys are yellow and have a flashing light and radar reflector

An Offshore Fisheries Liaison Officer will be present on the SW BLY.




4. Vessel and Towed Equipment Details



SW Bly: Seismic vessel towing 4 cables of 1.2 nm



Support & Guard vessels

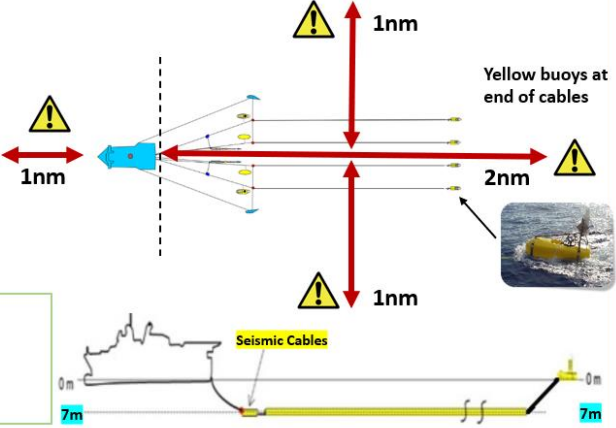
Ocean Don [MEIT3] Lady Helen [MMUL3] Julia Anne [MNNMY]

Vessel Name	SW Bly
Vessel Type	Seismic Survey Vessel
Call Sign	C6ZD3
IMO No.	9610171
MMSI	311052800
Tel.	+47 23 67 52 00

Seismic Vessel SW Bly call sign **C6ZD3** on VHF Channel 16 & 68

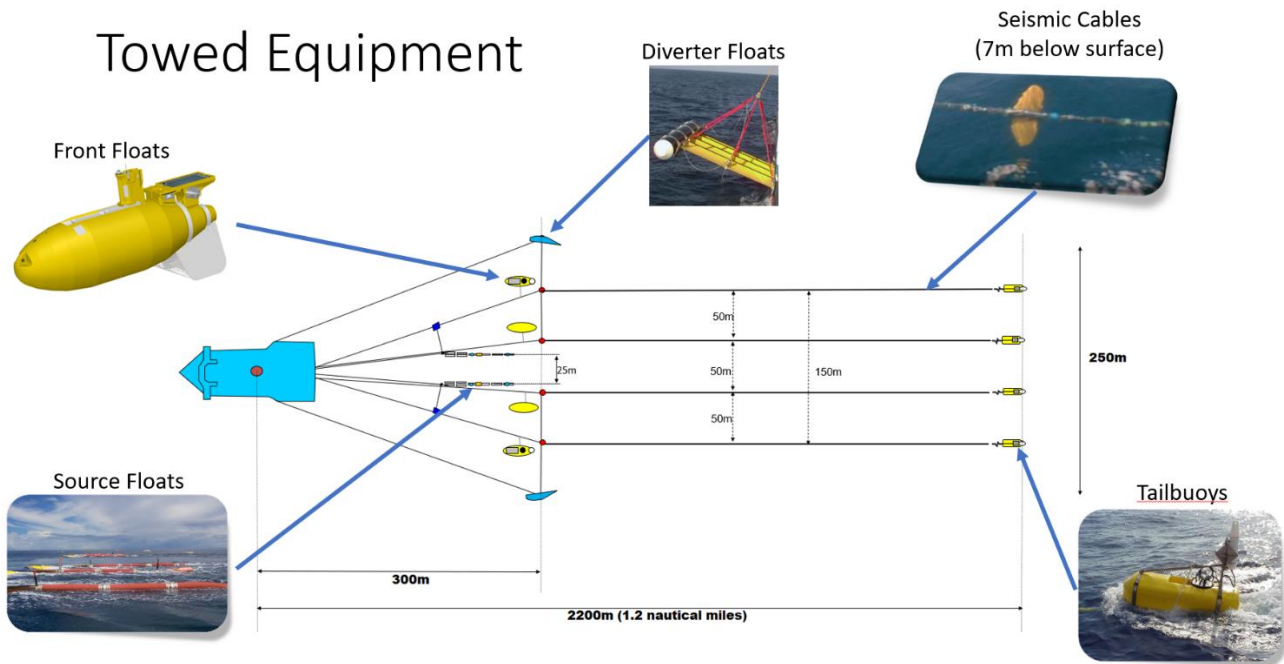
All vessels must maintain a minimum distance of:

- 1nm ahead of **Seismic Vessel**
- 1nm either port / starboard side of **Seismic Vessel**
- 2nm astern of **Seismic Vessel**



The diagram illustrates the required safety clearances around the seismic vessel SW Bly. A 1nm clearance is required on both the port and starboard sides, and a 2nm clearance is required astern. Yellow buoys are used to mark the ends of the seismic cables. A 7m depth contour is also shown.

Towed Equipment



5. Shearwater – Emergency Contact Details

Andrew Thompson (Operations Manager)

+44 7901 715521 athompson@shearwatergeo.com

SW Bly Master

+47 23 67 52 01 blymaster@shearwatergeo.com

SW Bly Party Manager

+47 23 67 52 04 blypm@shearwatergeo.com

Tom Watson (Onshore Fishing Industry Rep.)

+44 7903 173624 tomwatsonfleetwood@btinternet.com