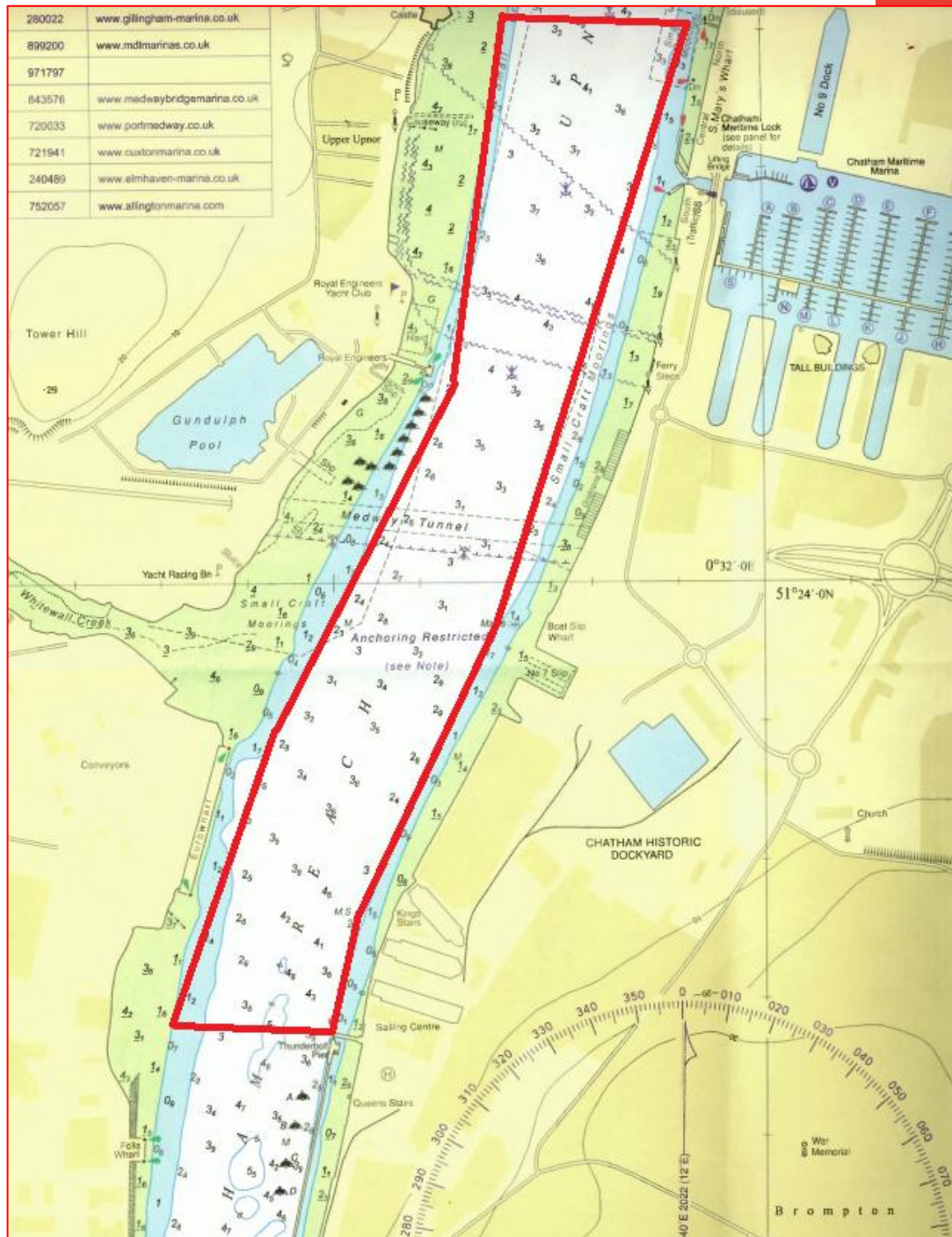


## SNtoM 10

### River Medway – Upnor Reach – Royal Engineers Training Manoeuvres.

**Notice is hereby given** that a formal agreement has been reached between Port of Sheerness Ltd. (Peel Ports) and 1 Royal School of Military Engineers (1 RSME Regt) Boat School at Upnor which will establish a set of procedures in relation to their manoeuvres on the River Medway. 1 RSME Regt. has operated it's boat school from Upnor Hard for many years, however, this agreement now aims to improve communications with other river users and formalise a working agreement to cover their activities. The points below form the basis of the agreement:

- 1RSME will endeavour to abide by the speed limits as far as practicable and at all times be respectful to all other river users.
- PoSL will permit 1RSME to exceed the speed restriction of 6 knots within a defined area of Upnor Reach. In the bounds of the below:
  - o A line from Upnor Castle due East until the eastern bank of the river.
  - o A line from the most northerly point of Thunderbolt pier due west to the western bank of the river.
- 1RSME will fly a red flag on a mast visible to river users when conducting training operations within Upnor Reach. Once the new jetty at Upnor has been commissioned, this flag will be positioned at the jetty head.
- 1 RSME Regt is to inform PoSL as soon as possible prior to delivering a training course so that PoSL is aware of upcoming training.
- PoSL will issue a Notice to Mariners and keep it updated when it receives the above exercises' dates. The notice will explain the agreement and publish the dates to all river users.
- 1RSME will contact Medway VTS (via VHF or Telephone) at the beginning and end of the training day. This will detail the area of operations that day, the number of vessels to be used and if speed restrictions will be exceeded.
- Medway VTS will notify any commercial traffic transiting the area of operation.
- Open dialogue will be maintained from both parties to investigate and report incidents.
- PoSL will work with UK Hydrographic office to have a designated area marked on the chart for military training area



**All craft transiting Upnor Reach when a red flag is flying from the Royal Engineers jetty head should do so with caution and be aware of the military training manoeuvres.**

Admiralty Chart No. 1835 refers.

Further information may be obtained from Medway VTS on VHF Channel 74, call sign "Medway VTS" or telephone 0151 949 6148 **(Recorded Line)**.

**Marine Operations Department  
Peel Ports London Medway**

Notice Issued:  
Notice Expiry:

20th January 2026  
N/A