

Transit Line - Bromborough Buoy to NE of Bromborough Wall - 359°



**MERSEY DOCKS AND HARBOUR COMPANY LTD**  
 Gary Doyle  
 Group Harbour Master  
 River Mersey  
 LPR002\_5\_2023\_002  
 Bromborough Wall

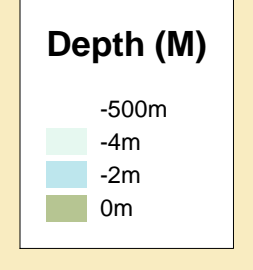
**DEPTHS**  
 Depths are in metres and are reduced to chart datum being 4.93m below Ordnance Datum (Newlyn), which is approximately the level of Lowest Astronomical Tide.

**HEIGHTS**  
 Heights are in metres. Underlined figures show heights above Chart Datum.

**POSITIONS**  
 Positions are referred to OSGB36 National Grid Datum.

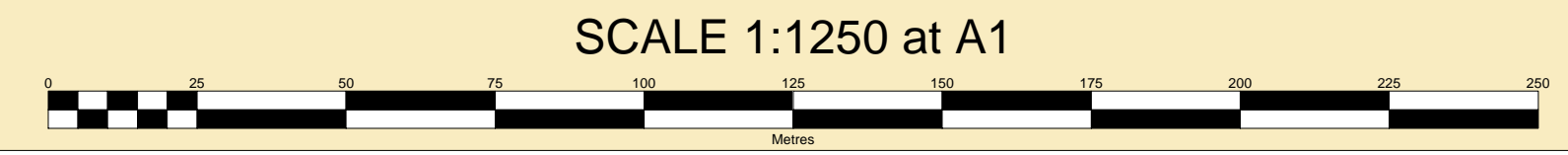
**UKHO & NTMS**  
 When using this chart please refer to UKHO Admiralty Publications and also local Notice to Mariners and Navigational Warnings.

Vesse:	Royal Charter
Surveyed by:	WLH
Processed by:	WLH
Checked by:	WLH
Surveyed:	16th October 2023
Issued:	17th October 2023



**TOPOGRAPHY**  
 The shore features on this chart are based largely on Ordnance Survey digital mapping data with permission of HMSO. © Crown Copyright 2023. Peel Licence Number 100018033.

**FLATS & SANDBANKS**  
 CAUTION OWING TO FREQUENT CHANGES IN DEPTHS AND POSITIONS OF FLATS AND SANDBANKS THIS CHART SHOULD BE USED WITH CAUTION.



SCALE 1:1250 at A1