

NOTICE TO MARINERS

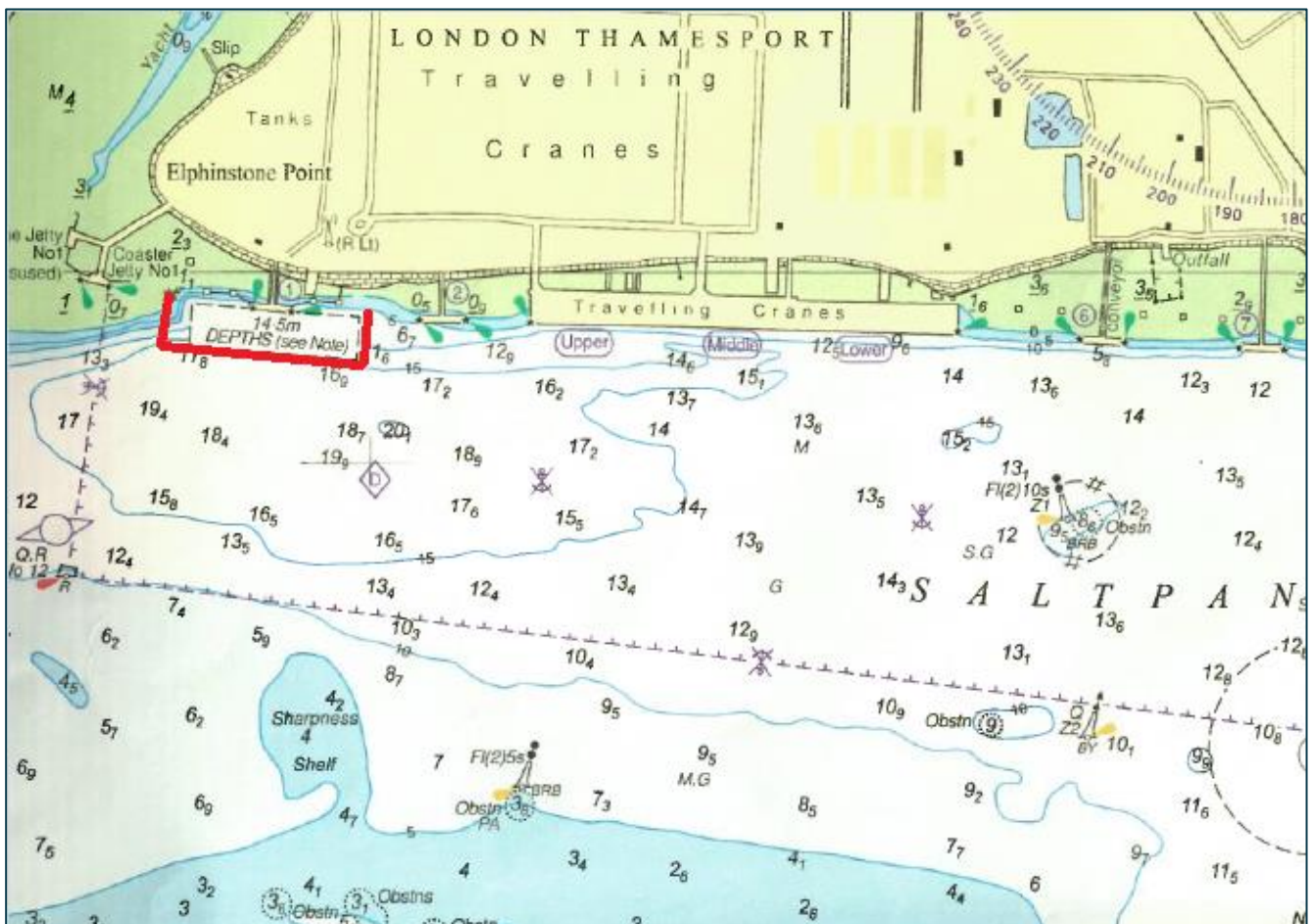


NtoM 36 - 2025

River Medway – Saltpan Reach

BP Isle of Grain Jetty No.1 – Dredging Operations

NOTICE IS HEREBY GIVEN that dredging operations are due to take place at BP Isle of Grain Jetty No.1, dredging is due to commence on or around 22nd September 2025 with a projected completion date of 22nd October 2025. All dredging will be carried out by the water injection dredger 'Aquadelta' who will maintain a listening watch on VHF Channel 74 at all times and display the required signals for respective operations by day and night. **All vessels passing Isle of Grain Jetty No.1 during the dredging period are requested to navigate with caution reducing speed and wash accordingly.**



Issued on behalf of Port of Sheerness Ltd, the Statutory Harbour Authority for the River Medway and The Swale
Telephone calls, VHF radio traffic, CCTV and radar traffic images may be recorded at
the Peel Ports Group Port Control Centre, Liverpool.

WID “Aquadelta”



Admiralty Chart : 1834 refers

Further information may be obtained from Medway VTS on VHF Channel 74, call sign “Medway VTS” or telephone 0151 949 6148 or 0151 949 6650 **(Recorded Lines)**

Marine Operations Department
Peel Ports London Medway

Notice Issue: 10th September 2025
Notice Expiry: 22nd October 2025