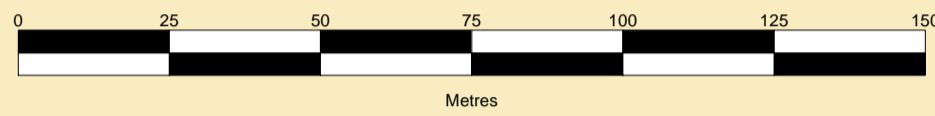




MERSEY DOCKS AND HARBOUR COMPANY LTD
 Captain Susan Cloggie-Holden MNM
 Group Harbour Master

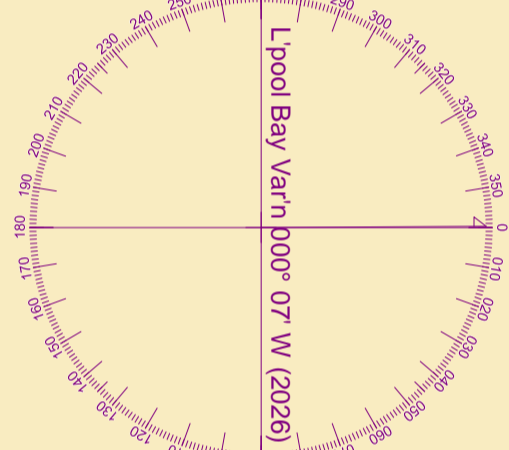
River Mersey

LPR002_4_2026_002C
Cammell Laird's Wall

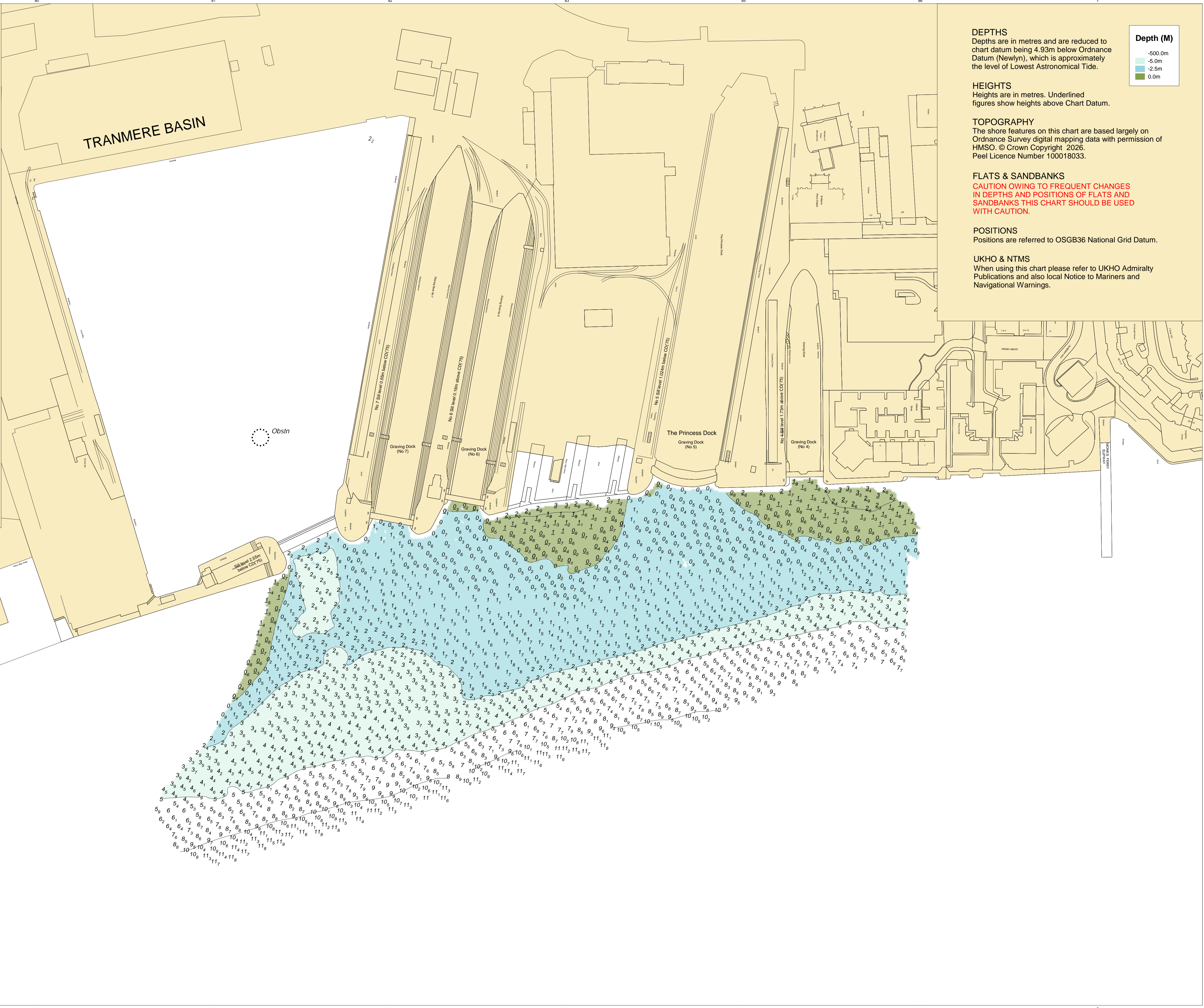


SCALE 1:1250 at A1

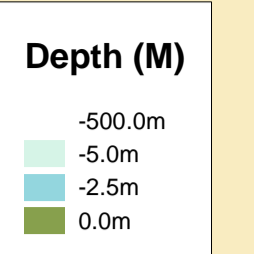
Surveyed by: VO
 Processed by: VO
 Checked by: NM
 Surveyed: 30th March 2026
 Issued: 31st March 2026



Pontoon and Moorings in this area
 (see MD&HC Ltd Notice to Mariners No 24 - 2012)



DEPTHS
 Depths are in metres and are reduced to chart datum being 4.93m below Ordnance Datum (Newlyn), which is approximately the level of Lowest Astronomical Tide.



HEIGHTS
 Heights are in metres. Underlined figures show heights above Chart Datum.

TOPOGRAPHY
 The shore features on this chart are based largely on Ordnance Survey digital mapping data with permission of HMSO. © Crown Copyright 2026. Peel Licence Number 100018033.

FLATS & SANDBANKS
CAUTION OWING TO FREQUENT CHANGES IN DEPTHS AND POSITIONS OF FLATS AND SANDBANKS THIS CHART SHOULD BE USED WITH CAUTION.

POSITIONS
 Positions are referred to OSGB36 National Grid Datum.

UKHO & NTMS
 When using this chart please refer to UKHO Admiralty Publications and also local Notice to Mariners and Navigational Warnings.