

NOTICE TO MARINERS

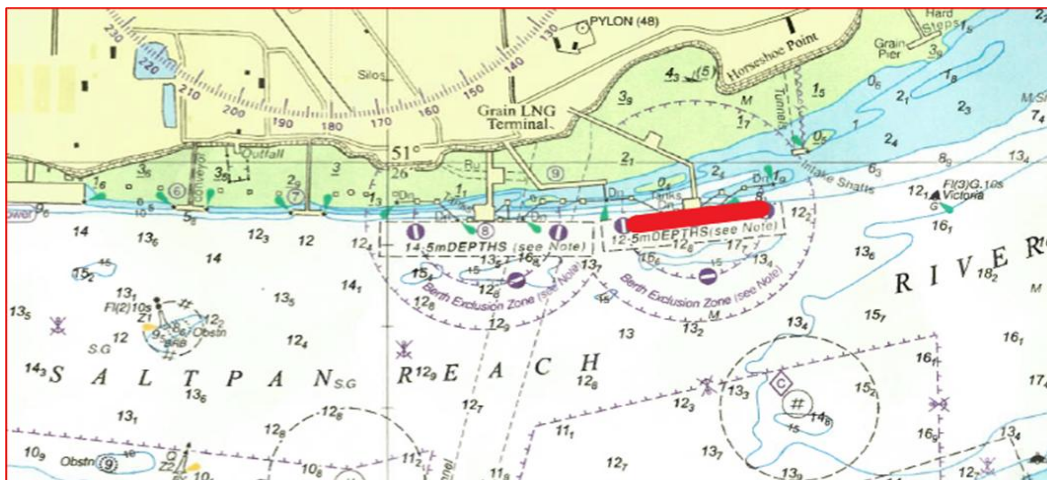
NtoM 31 - 2026

River Medway – Saltpan Reach

LNG Jetty 10 – Heavy Lift Operations and Maintenance Work.

Notice is hereby given that heavy lift operations will be taking place at the Isle of Grain, LNG Jetty No.10. Work to remove and subsequently reinstall sections of two of the discharge arms will be undertaken as follows:

Lifting operations will be carried out by the Crane Barge Willcarry 1717, Tug Willdiscover and the Tug Merit. Heavy lift Operations will commence from Monday 22nd June and complete by Wednesday 24th June. The Crane Barge will then commence maintenance work on the Jetty until completion on approx.14th July.



Admiralty Chart No.1834 refers.



Issued on behalf of Port of Sheerness Ltd, the Statutory Harbour Authority for the River Medway and The Swale
Telephone calls, VHF radio traffic, CCTV and radar traffic images may be recorded at
the Peel Ports Group Port Control Centre, Liverpool.

Friday 19th June 2026.

Tug towing Crane Barge arrives at LNG Jetty 10.

Monday 22nd June 2026.

Heavy lift operations commence to remove sections of two of the discharge arms from LNG Jetty 10 onto the Crane Barge.

Tuesday 23rd June 2026.

Tug with Crane Barge departs LNG Jetty 10 for Thamesport Lower Berth to discharge the sections of the loading arms then Tug with Crane Barge will return to LNG Jetty 10.

Wednesday 24th June 2026 Until Tuesday 14th July.

Crane Barge involved in maintenance operations on LNG Jetty 10.

When lifting operations are being undertaken at the LNG Jetty 10, the exclusion zone will extend to 250 meters.

All vessels are requested to pass with caution, minimise their wash and maintain a listening watch on VHF channel 74 at all times.

Further information may be obtained from Medway VTS on VHF Channel 74, call sign "Medway VTS" or telephone 0151 949 6148 or 0151 949 6650 (**Recorded Lines**)

**Marine Operations Department
Peel Ports London Medway**

Notice Issue: 17th June 2026
Notice Expiry 14th July 2026