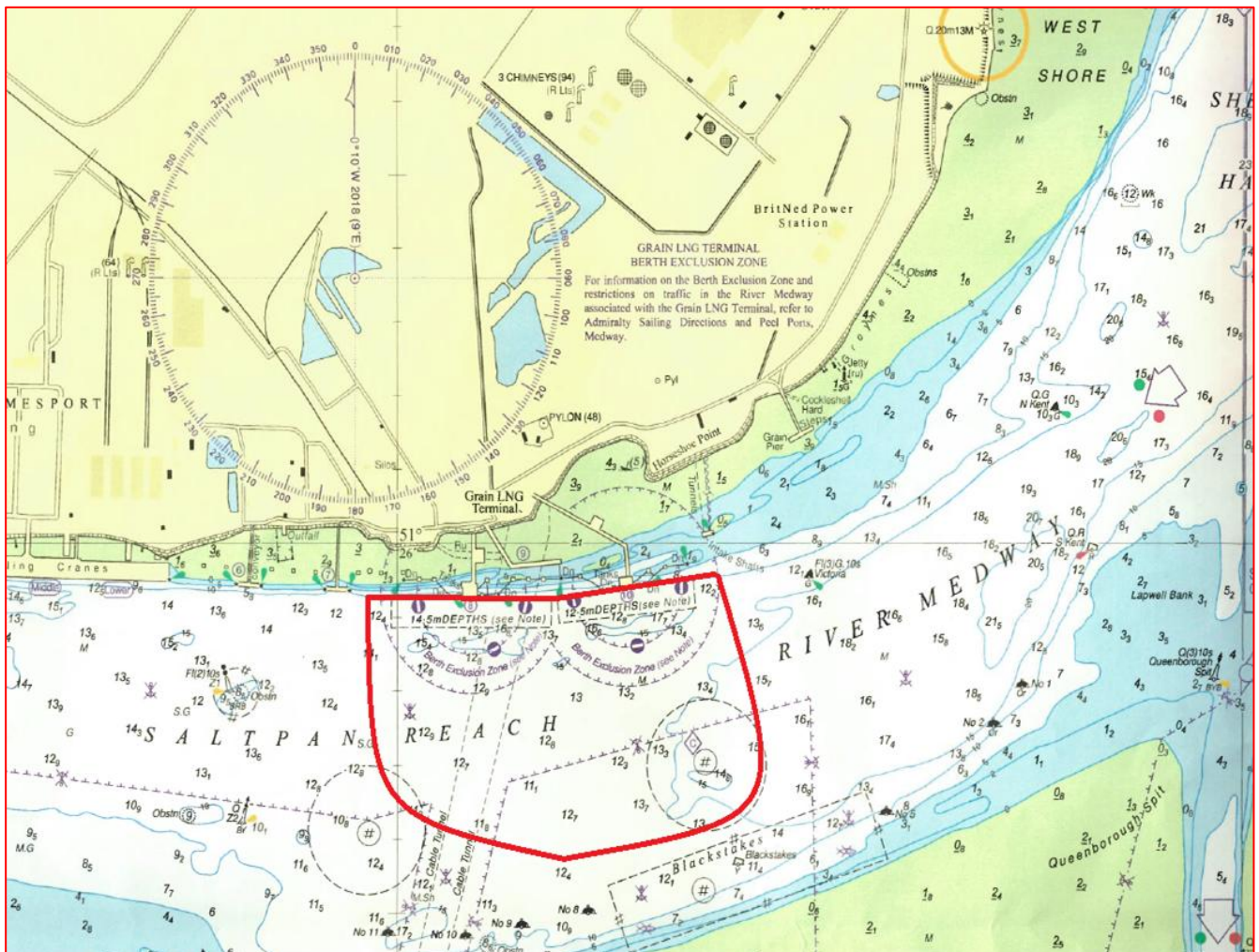


STANDING NOTICE TO MARINERS

SNtoM 002

LNG VESSEL TRANSIT AND MANOEUVRES

NOTICE IS HEREBY GIVEN a number of incidents in recent years has highlighted an issue surrounding the navigation and proximity of leisure craft and fishing boats in relation to the movement of LNG Vessels. LNG ship movements are extremely sensitive for a number of reasons; the size of the vessel, the level of tug assistance required, the complexity of the berthing/unberthing manoeuvre and the very nature of the cargo they carry. When an LNG ship is transiting the River Medway or in the process of manoeuvring on/off the berth at Isle of Grain all vessels are required to keep well clear and maintain a safe distance.



Issued on behalf of Port of Sheerness Ltd, the Statutory Harbour Authority for the River Medway and The Swale
Telephone calls, VHF radio traffic, CCTV and radar traffic images may be recorded at
the Peel Ports Group Port Control Centre, Liverpool.

The chart above shows the potential turning circle of an LNG ship and indicates the amount of sea room that needs to be kept clear for the turning manoeuvre. The area highlighted may alter depending on the size of the vessel and if the adjacent LNG berth is occupied by another ship, however, the zone marked is based on the largest LNG vessels expected (345m LOA).

When the ship is fast alongside the established LNG berth exclusion zone and associated rules apply to all craft as per Medway Standing NtoM 001

UKHO Chart 1834 refers

Further information may be obtained from Medway VTS on VHF Channel 74, call sign "Medway VTS" or telephone 0151 949 6148 or 0151 949 6650 (**Recorded Lines**)

Marine Operations Department
Peel Ports London Medway

Notice Issued:	1 st January 2026
Notice Expiry:	N/A