

# NOTICE TO MARINERS

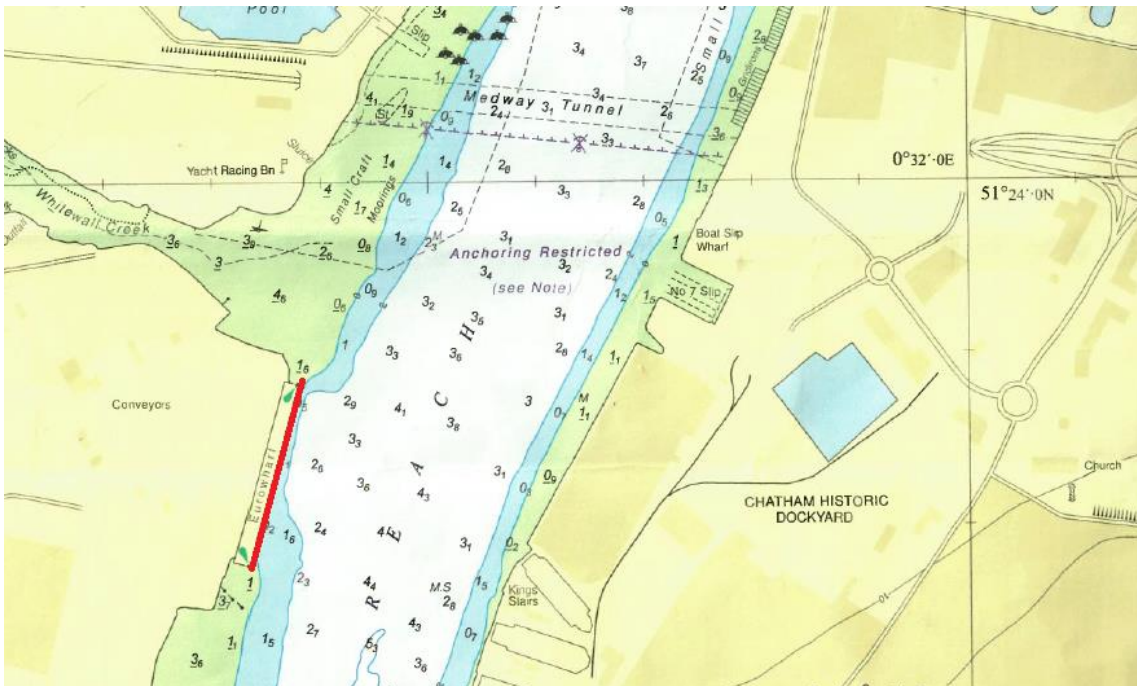
## No. 09 – 2022

### RIVER MEDWAY – CHATHAM REACH Euro Wharf – River Works

Notice is hereby given that work on the sheet piled berth face at Euro Wharf **started week commencing 8<sup>th</sup> November 2021**. The activity involves installing 100 flap valves along the front of the sheet piled wall. As the flap valves are installed, any holes in the sheet piling will be repaired by welding plates in place. The flap valves will be installed by welding a backplate to the sheet pile, the hole for the flap valve will then be cut through the bracket and the sheet pile wall by burning. A membrane will be installed behind the sheet pile wall to prevent backfill material from exiting the sheet pile wall. The flap will then be secured in place to complete the flap valve installation.

All work will be carried out over low water periods by the workboat “Assassin” who will maintain a listening watch on VHF channel 74 at all times. **The work is expected to take approximately 3 months to complete.**

All vessels are requested to navigate with caution and minimise their wash when passing Euro Wharf whilst men are working on the waterline.



Admiralty Chart No. 1835 refers.

Further information may be obtained from Medway VTS on VHF Channel 74, call sign “Medway VTS” or telephone 0151 949 6148.

Marine Operations Department  
Peel Ports London Medway

5<sup>th</sup> January 2022