



MERSEY DOCKS AND HARBOUR COMPANY LTD

Gary Doyle
Group Harbour Master

River Mersey

DEPTHS
Depths are in metres and are reduced to chart datum being 4.93m below Ordnance Datum (Newlyn), which is approximately the level of Lowest Astronomical Tide.

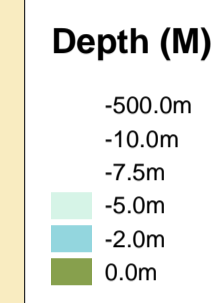
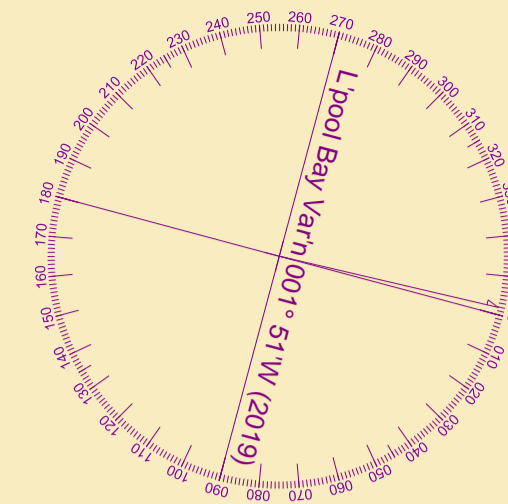
HEIGHTS
Heights are in metres. Underlined figures show heights above Chart Datum.

POSITIONS
Positions are referred to OSGB36 National Grid Datum.

UKHO & NTMS
When using this chart please refer to UKHO Admiralty Publications and also local Notice to Mariners and Navigational Warnings.

TOPOGRAPHY
The shore features on this chart are based largely on Ordnance Survey digital mapping data with permission of HMSO. © Crown Copyright 2023. Peel Licence Number 100018033.

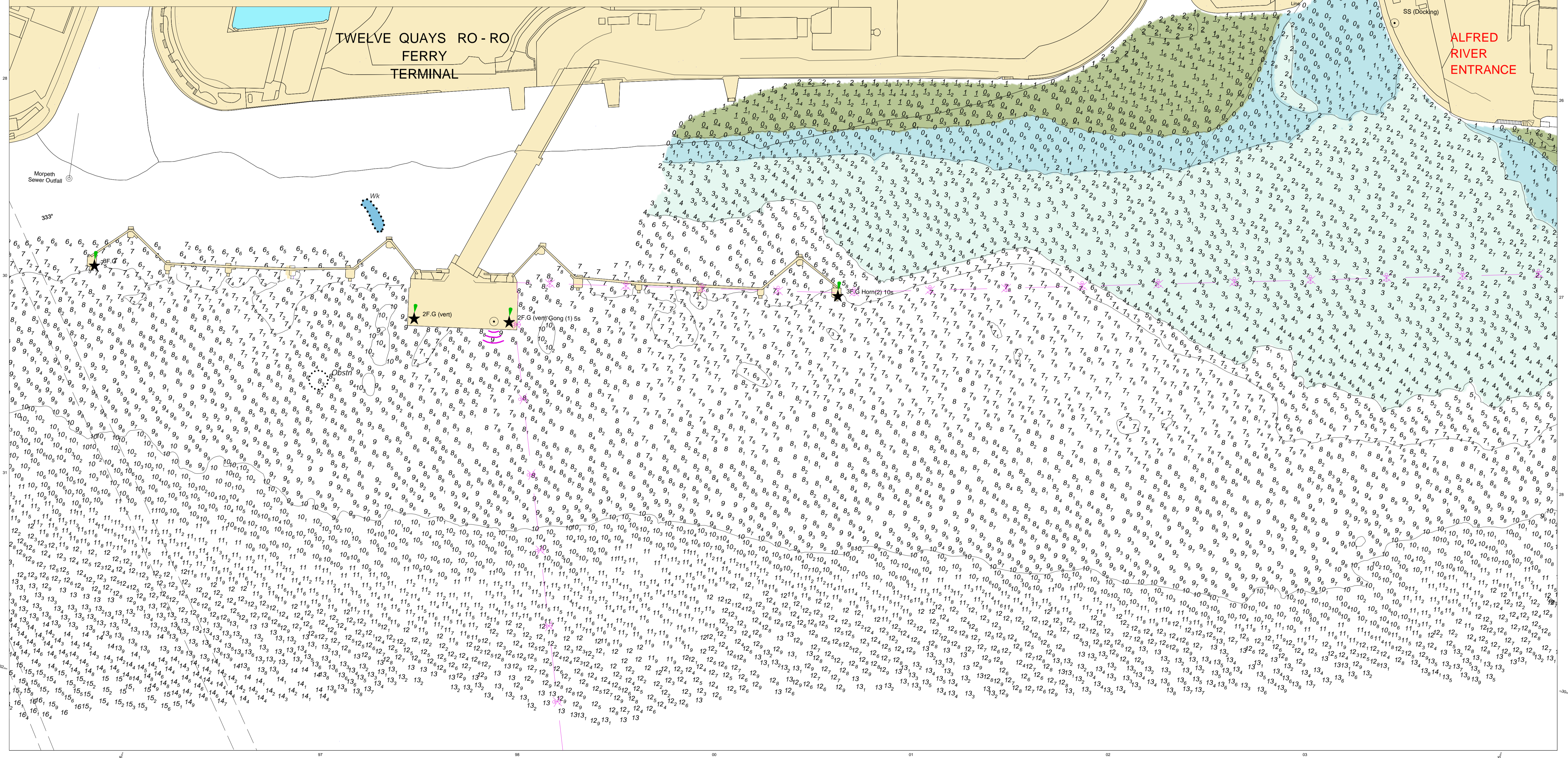
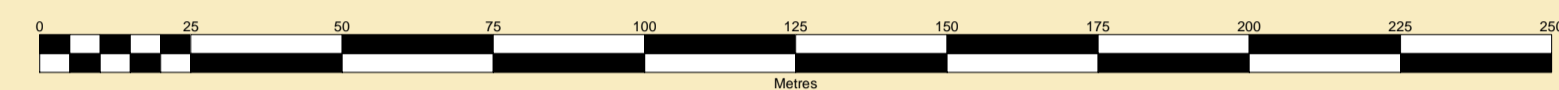
FLATS & SANDBANKS
CAUTION OWING TO FREQUENT CHANGES IN DEPTHS AND POSITIONS OF FLATS AND SANDBANKS THIS CHART SHOULD BE USED WITH CAUTION.



Vessel:	Royal Charter
Surveyed by:	NM
Processed by:	NM
Checked by:	NM
Surveyed:	5th January 2023
Issued:	6th January 2023
Alfred Lock Surveyed:	5th January 2023

LPR001_4_2023_001 Approaches to Alfred River Entrance and Twelve Quays Ro-Ro Terminal

SCALE 1:1250 at A1



PLEASE CONSULT WITH THE DOCKMASTER FOR LATEST LOCK SOUNDING INFORMATION

ALFRED RIVER ENTRANCE

TWELVE QUAYS RO-RO FERRY TERMINAL

STENA LINE FERRY TERMINAL

Morpeth Sewer Outfall

Wk

2F.G (vert)

2F.G (very) Gong (1) 5s

SPRG Horn(2) 10s

Obsln

Sill level 3.8m below CD75

Sill level 3.8m below CD75

Sill level 2.01m below CD75

Dredging Limit

SS (Docking)

333°

16

15

14

13

17

16

15

14

18

17

16

15

19

18

17

16

20

19

18

17

21

20

19

18

22

21

20

19

23

22

21

20

24

23

22

21

25

24

23

22

26

25

24

23

27

26

25

24

28

27

26

25

29

28

27

26

30

29

28

27

31

30

29

28

32

31

30

29

33

32

31

30

34

33

32

31

35

34

33

32

36

35

34

33

37

36

35

34

38

37

36

35

39

38

37

36

40

39

38

37

41

40

39

38

42

41

40

39

43

42

41

40

44

43

42

41

45

44

43

42

46

45

44

43

47

46

45

44

48

47

46

45

49

48

47

46

50

49

48

47

51

50

49

48

52

51

50

49

53

52

51

50

54

53

52

51

55

54

53

52

56

55

54

53

57

56

55

54

58

57

56

55

59

58

57

56

60

59

58

57

61

60

59

58

62

61

60

59

63

62

61

60

64

63

62

61

65

64

63

62