

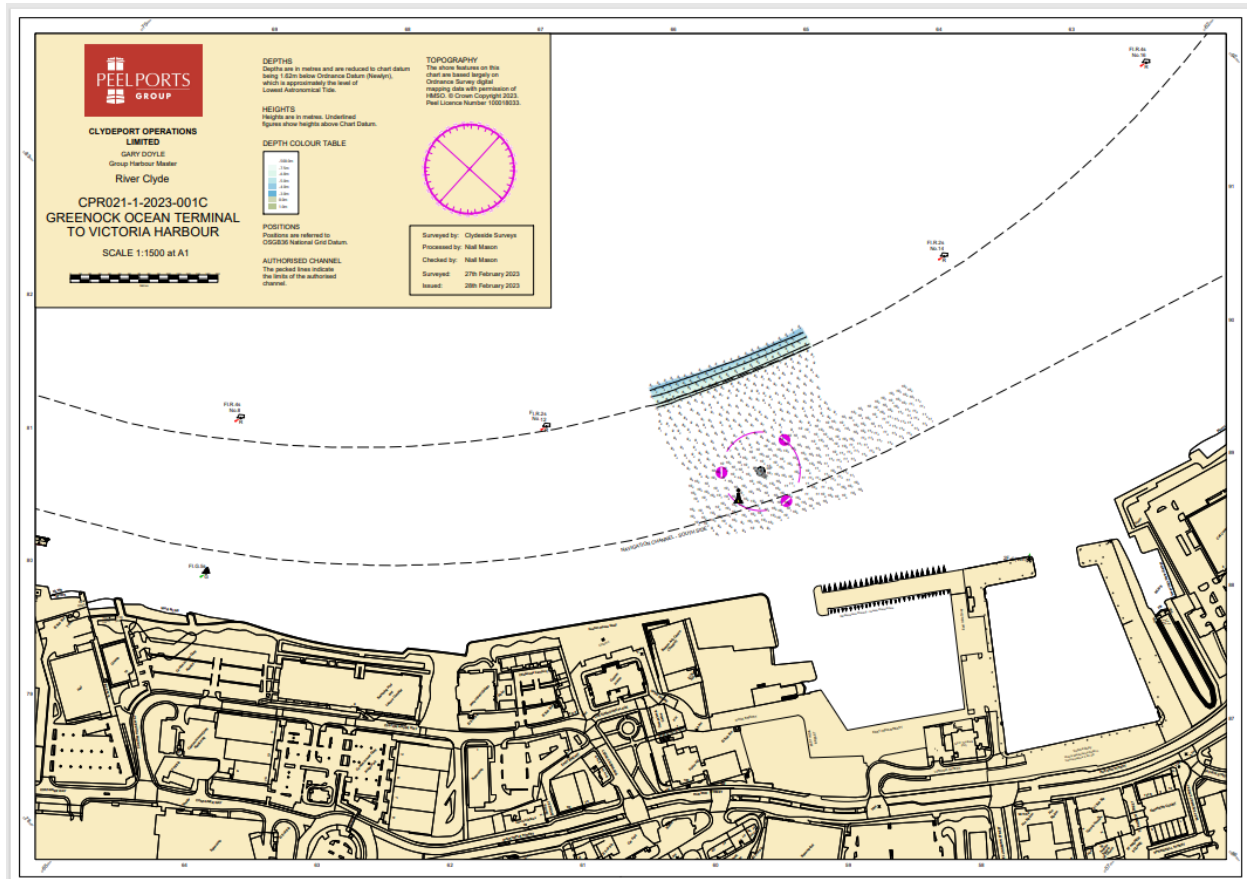
## NOTICE TO MARINERS No 31/23 RIVER CLYDE – GREENOCK – EAST INDIA HARBOUR TEMPORARY EXCLUSION ZONE

**Chart 1994**

Mariners are advised that due to the position of a wreck, restrictions are in place for transiting the river. LOA and Draft limitations exist. A wreck marker buoy (blue/yellow vertical stripes) has been deployed in position 55°56'90.5N 004°44'85.4W with sequence FIY5s.

Agents are advised to email [clydemarinemanagers@peelports.com](mailto:clydemarinemanagers@peelports.com) before booking and ensure sufficient time for their vessels to be risk assessed on a case-by-case basis. The SHA is working with other agencies to resolve these restrictions and will update in due course.

Pleasure vessels are advised to proceed with caution past the buoyed area. All vessels are requested to transit the area at safe speed.



Estuary Radio may be contacted on VHF Ch12 or 0151-949 6651.