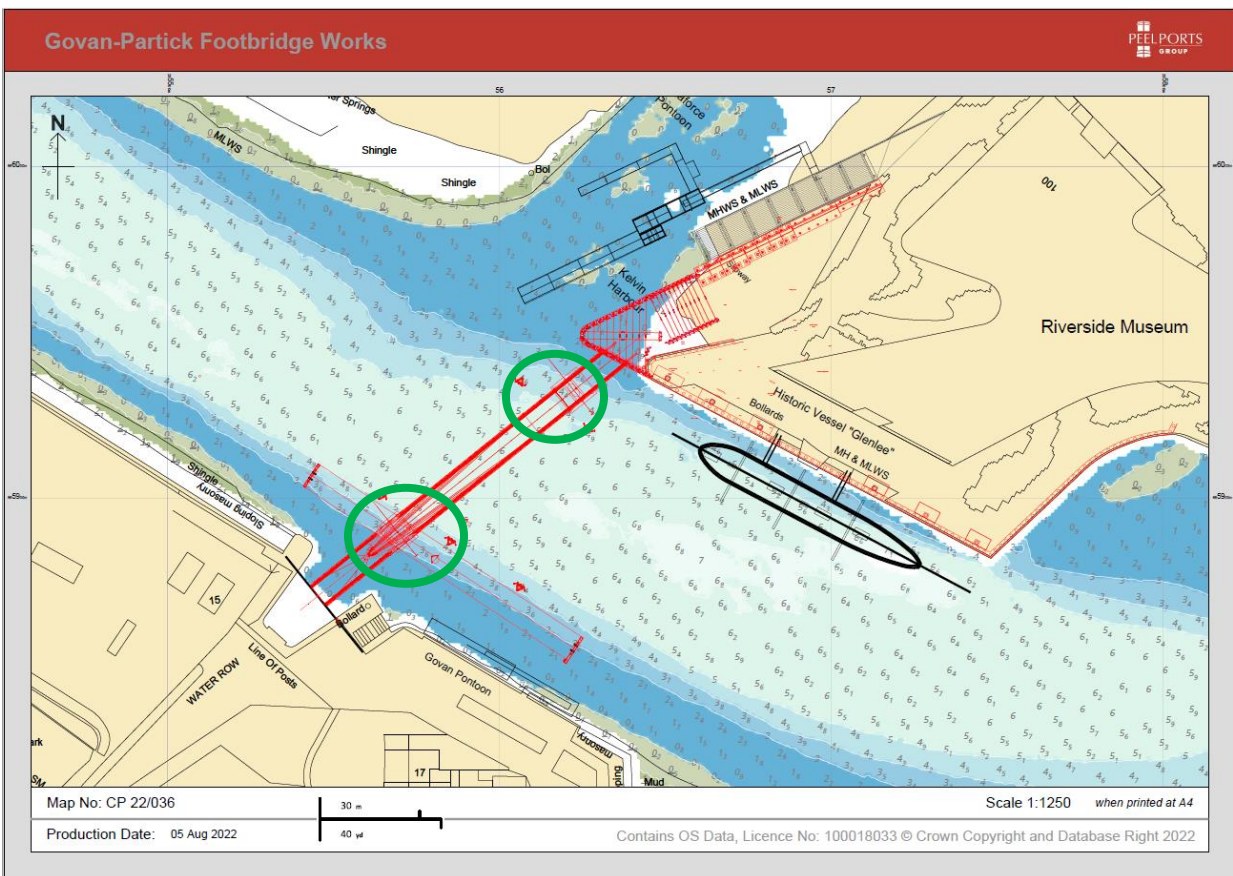


## NOTICE TO MARINERS No 70/23 V2 RIVER CLYDE – CONSTRUCTION OF GOVAN TO PARTICK FOOTBRIDGE

Chart 2007 Plan D

Mariners are advised that works associated with building a new opening footbridge across the River Clyde between Govan and Partick are ongoing. Works to remove the south pier cofferdam and install the north pier cofferdam will continue until approximately the end of December. The green circles indicate the locations of the cofferdams. The bridge span is not yet in place. A safety boat is in operation to support the works as required.

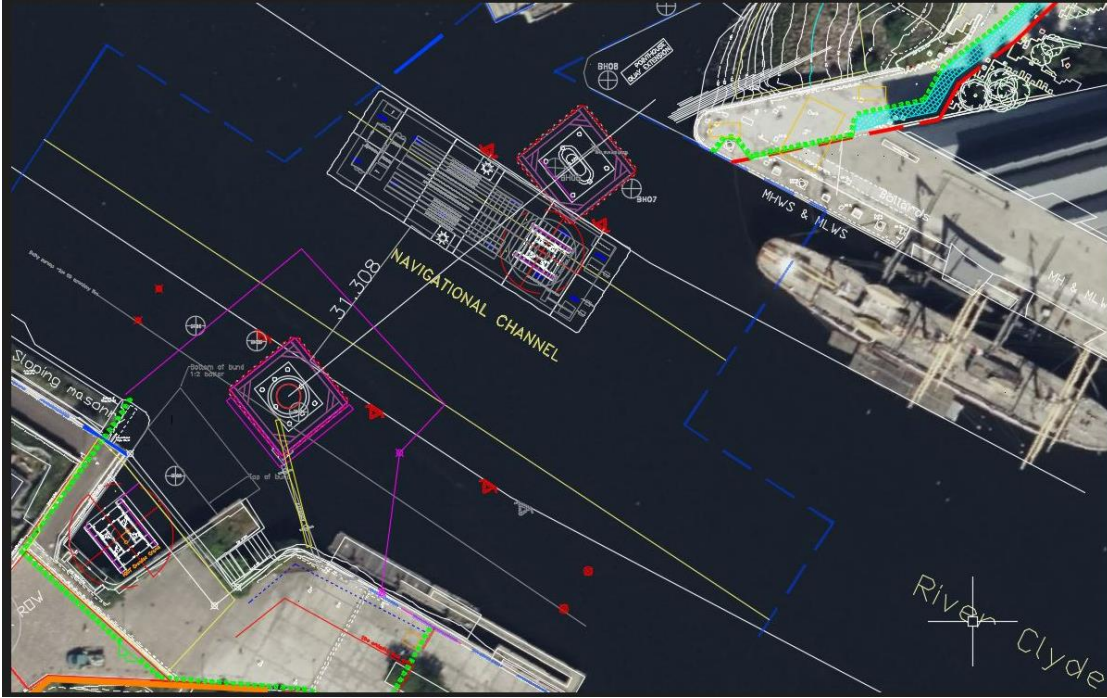


Mariners are requested to navigate with caution in this area and pass the construction site at appropriate speed.

Estuary Radio may be contacted on VHF Ch 12 or on ☎ 0151 949 6651 (Recorded Line).

The cofferdam works will be conducted from CW6 barge, with planned locations as follows:

**SOUTH COFFERDAM BARGE LOCATION**



**NORTH COFFERDAM BARGE LOCATION**

