

# NOTICE TO MARINERS

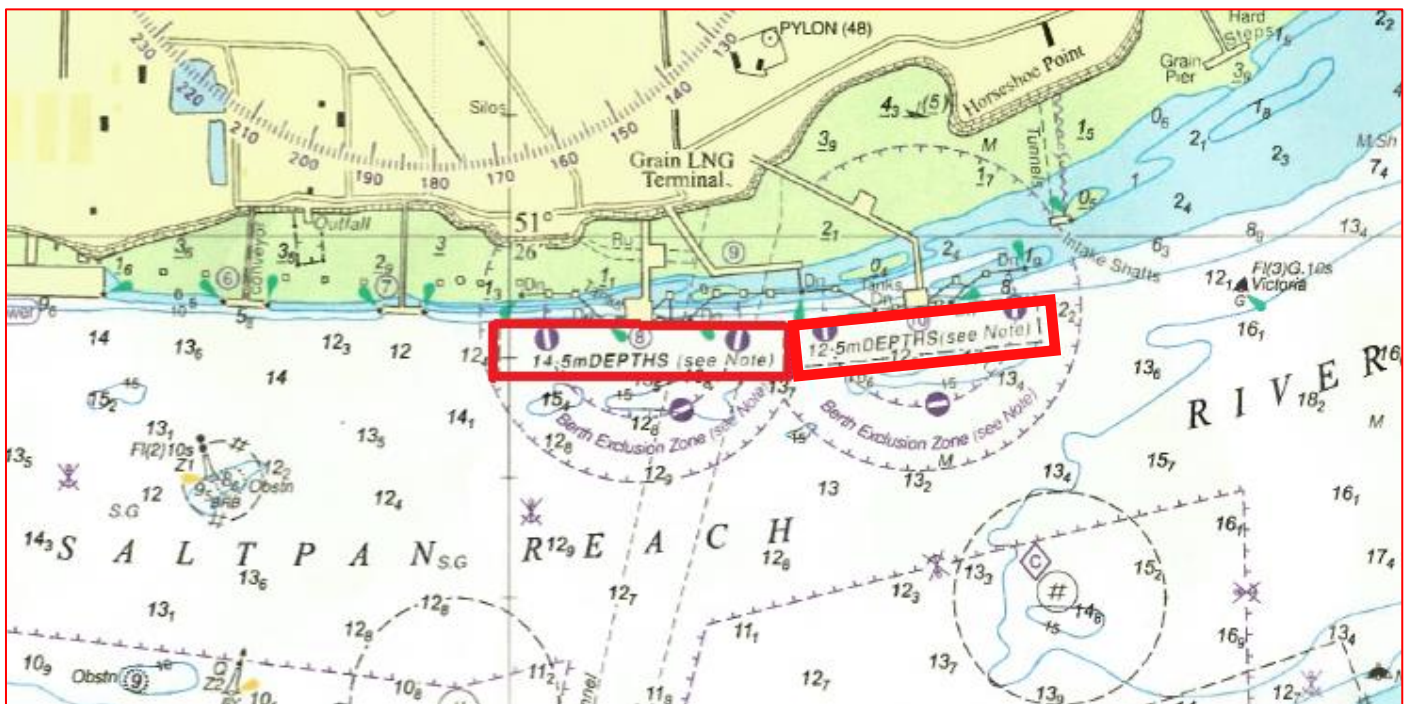


**NtoM 37 - 2025**

## River Medway – Saltpan Reach Grain LNG Jetties 8 & 10 – Dredging Operations

**Notice is hereby given** that Dredging operations are due to take place at the Isle of Grain LNG Jetties 8 & 10, dredging will commence on or around 26<sup>th</sup> September 2025 and is expected to be completed by 29<sup>th</sup> September 2025. Operations will be focussed around the “berthing boxes” of both jetties and will be carried out by the water injection dredger ‘Aquadelta’ who will maintain a listening watch on VHF Channel 74 at all times.

**All vessels passing Grain LNG Jetty 8 & 10 should navigate with caution, observe the LNG Jetty exclusion zone at all times, and reduce speed and minimise wash accordingly.**



Issued on behalf of Port of Sheerness Ltd, the Statutory Harbour Authority for the River Medway and The Swale  
Telephone calls, VHF radio traffic, CCTV and radar traffic images may be recorded at  
the Peel Ports Group Port Control Centre, Liverpool.

### WID “Aquadelta”



Admiralty Chart: 1834 refers.

Further information may be obtained from Medway VTS on VHF Channel 74, call sign “Medway VTS” or telephone 0151 949 6148 or 0151 949 6650 (**Recorded Lines**)

**Marine Operations Department  
Peel Ports London Medway**

Notice Issued 16<sup>th</sup> September 2025  
Notice Expiry 29<sup>th</sup> September 2025