



**MERSEY DOCKS AND HARBOUR COMPANY LTD**

Gary Doyle  
Group Harbour Master

Liverpool Docks

**LPD004\_1\_2024\_003C  
LANGTON & BROCKLEBANK  
DOCKS & BRANCH**

**DEPTHS**

Depths are in metres and are reduced to chart datum being 4.93m below Ordnance Datum (Newlyn), which is approximately the level of Lowest Astronomical Tide.

**HEIGHTS**

Heights are in metres. Underlined figures show heights above Chart Datum.

**POSITIONS**

Positions are referred to OSGB36 National Grid Datum.

**UKHO & NTMS**

When using this chart please refer to UKHO Admiralty Publications and also local Notice to Mariners and Navigational Warnings.

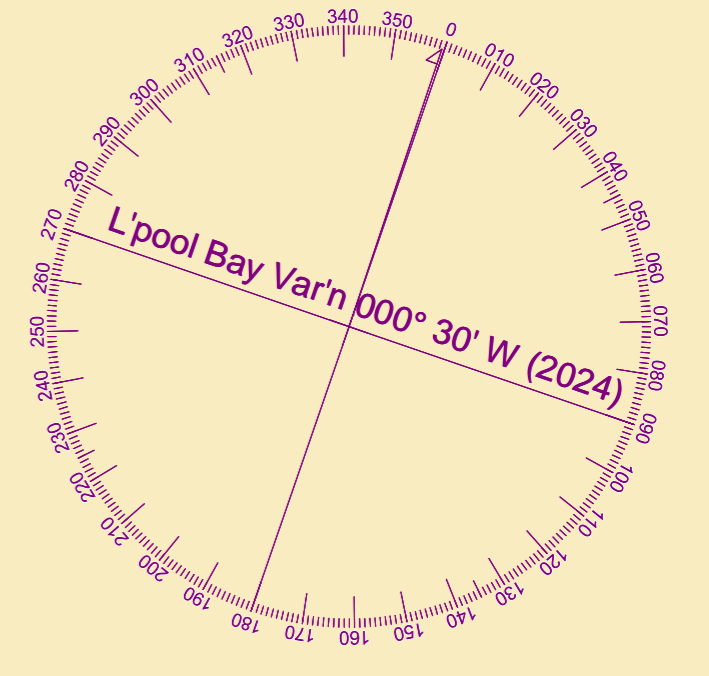
Surveyed by:	VO
Processed by:	VO
Checked by:	RK
Surveyed:	7th February 2024
Issued:	8th February 2024
Lock Surveyed:	-
Vessel:	Porth Wen

**TOPOGRAPHY**

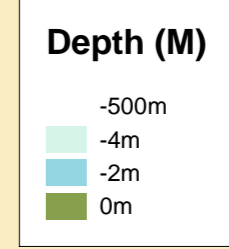
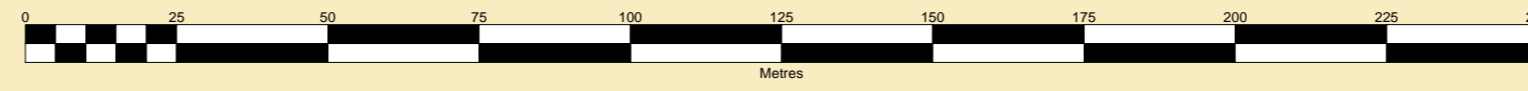
The shore features on this chart are based largely on Ordnance Survey digital mapping data with permission of HMSO. © Crown Copyright 2024. Peel Licence Number 100018033.

**FLATS & SANDBANKS**

**CAUTION OWING TO FREQUENT CHANGES IN DEPTHS AND POSITIONS OF FLATS AND SANDBANKS THIS CHART SHOULD BE USED WITH CAUTION.**



SCALE 1:1250 at A1



Dredging Limit Line

