

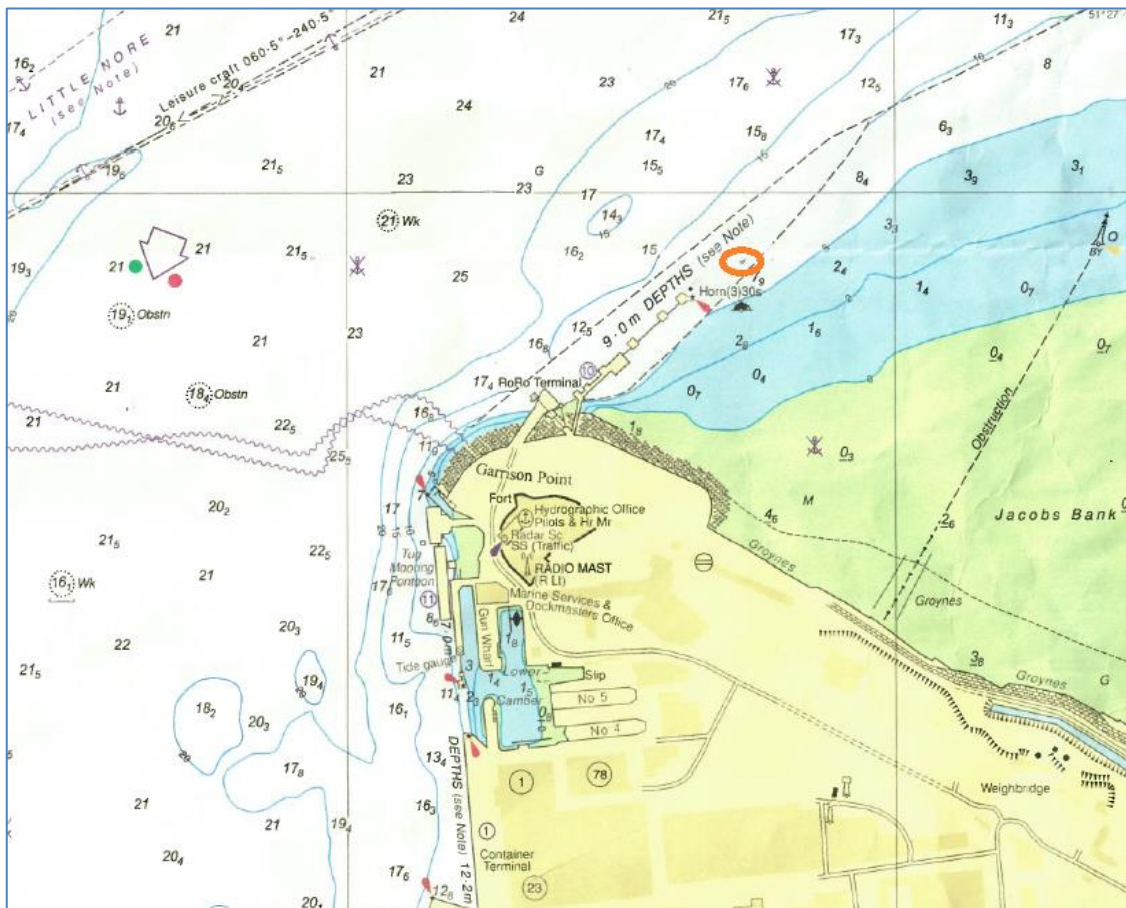
NOTICE TO MARINERS

No. 32 – 2021 (Updated 09/08/21)

RIVER MEDWAY – Approaches to Sheerness Garrison Point – SD.10 – Installation of Mooring Buoy

Notice is hereby given that a new mooring buoy has now been laid off of the Downstream end of Sheerness No.10 berth in the following approximate position : -

51° 26.966' N – 000° 44.884'E



The mooring buoy will be utilised by Ro-Ro vessels berthing on SD.10, when alongside, the ship's mooring lines will create a hazard between the buoy and the vessel. When the berth is not in use the mooring lines will run from the buoy to the berth and be made fast on the downstream dolphin, whilst the ropes are in the water they will be made more conspicuous by coloured marker buoys.



When ropes are running from the buoy to the berth, passage between the mooring buoy and downstream dolphin on SD.10 will not be possible. Mariners are advised to navigate with caution in the vicinity of Garrison Point and **NOT** pass between the buoy and the end of Sheerness No.10 berth.





Admiralty Chart No. 3683 refers.

Further information may be obtained from Medway VTS on VHF Channel 74, call sign "Medway VTS" or telephone 0151 949 6148.

**Marine Operations Department
Peel Ports London Medway**

9th August 2021.