

MERSEY DOCKS AND HARBOUR COMPANY LTD

Gary Doyle
Group Harbour Master

River Mersey
LPR001_3_2025_005
Langton River
Entrance

DEPTHS
Depths are in metres and are reduced to chart datum being 4.93m below Ordnance Datum (Newlyn), which is approximately the level of Lowest Astronomical Tide.

HEIGHTS
Heights are in metres. Underlined figures show heights above Chart Datum.

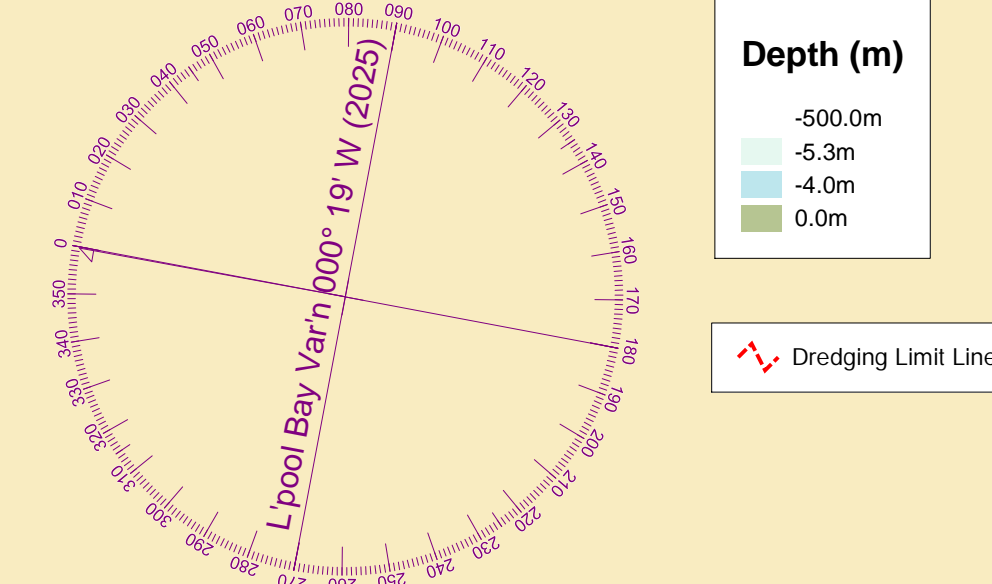
POSITIONS
Positions are referred to OSGB36 National Grid Datum.

UKHO & NTMS
When using this chart please refer to UKHO Admiralty Publications and also local Notice to Mariners and Navigational Warnings.

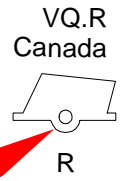
Vessel:	Porth Wen
Surveyed by:	VO
Processed by:	RK
Checked by:	RK
Surveyed:	4th June 2025
Issued:	12th June 2025
Lock Surveyed:	5th June 2025

TOPOGRAPHY
The shore features on this chart are based largely on Ordnance Survey digital mapping data with permission of HMSO. © Crown Copyright 2025. Peel Licence Number 100018033.

FLATS & SANDBANKS
CAUTION OWING TO FREQUENT CHANGES IN DEPTHS AND POSITIONS OF FLATS AND SANDBANKS THIS CHART SHOULD BE USED WITH CAUTION.



NOTE OBSTRUCTIONS IN THE VICINITY OF THE LOCK ENTRANCE/BULLNOSE
Bathymetric data shows various historically known long standing seabed structures/artefacts thought possibly to be part of the original River Entrance construction which are now, in the interest of navigation, being shown as obstructions



GREEN
WHITE
RED

GREEN