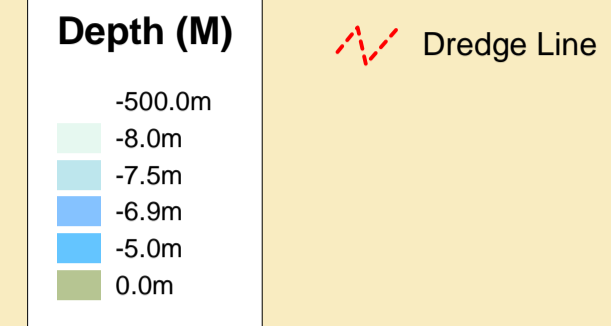




**DEPTHS**  
Depths are in metres and are reduced to chart datum being 4.93m below Ordnance Datum (Newlyn), which is approximately the level of Lowest Astronomical Tide.

**HEIGHTS**  
Heights are in metres. Underlined figures show heights above Chart Datum.



**TOPOGRAPHY**  
The shore features on this chart are based largely on Ordnance Survey digital mapping data with permission of HMSO. © Crown Copyright 2026. Peel Licence Number 100018033.

**FLATS & SANDBANKS**  
**CAUTION OWING TO FREQUENT CHANGES IN DEPTHS AND POSITIONS OF FLATS AND SANDBANKS THIS CHART SHOULD BE USED WITH CAUTION.**

Surveyed by: VO  
Processed by: VO  
Checked by: WLH  
Surveyed: 1st May 2026  
Issued: 8th May 2026

**MERSEY DOCKS AND HARBOUR COMPANY LTD**

Captain Susan Cloggie-Holden MNM  
Group Harbour Master

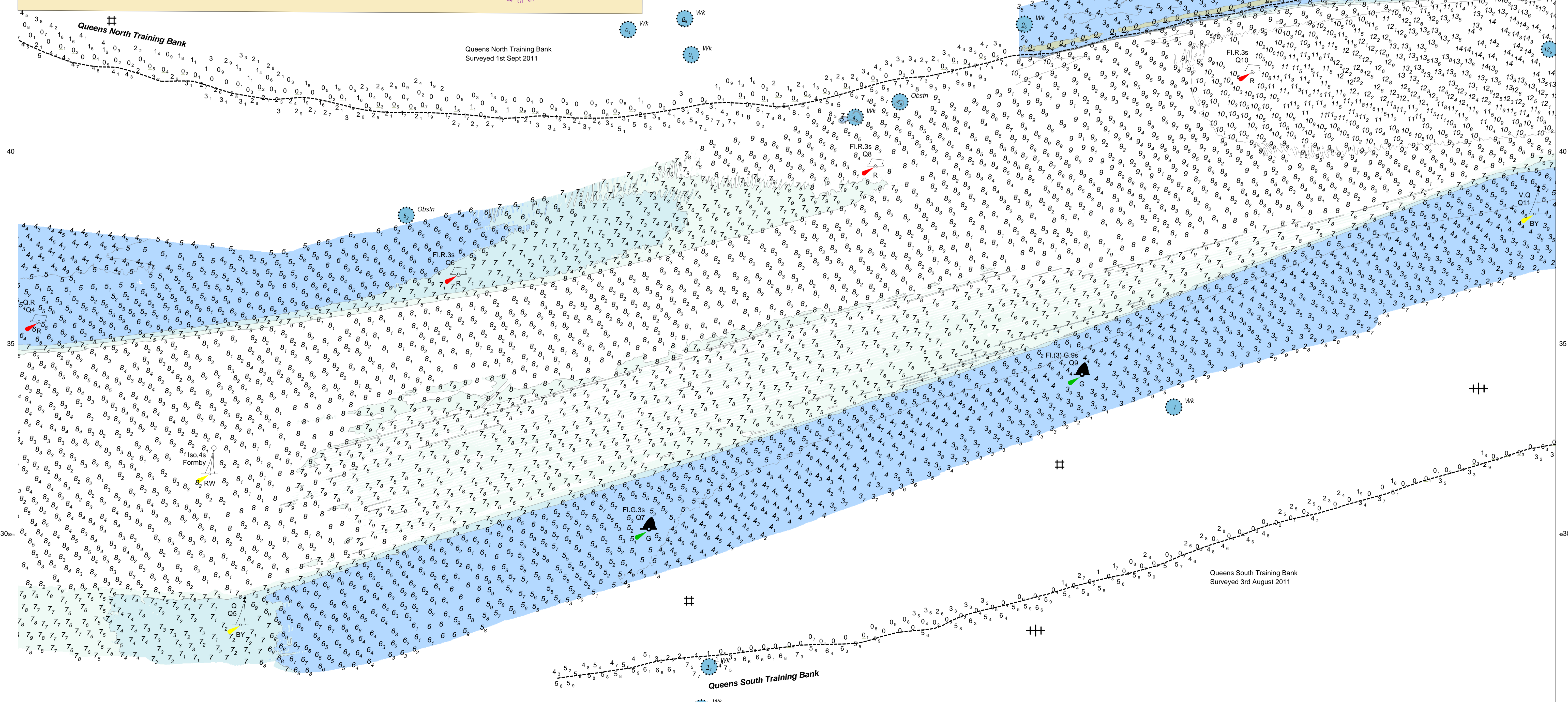
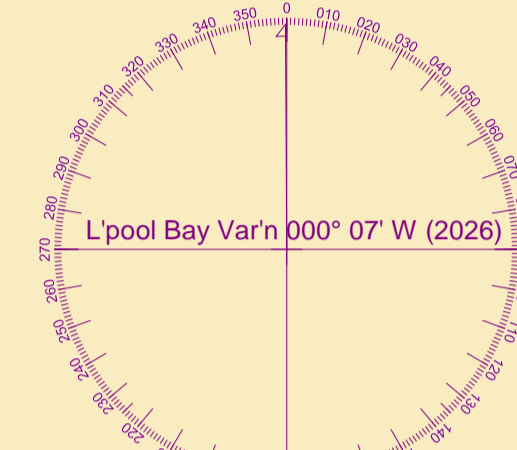
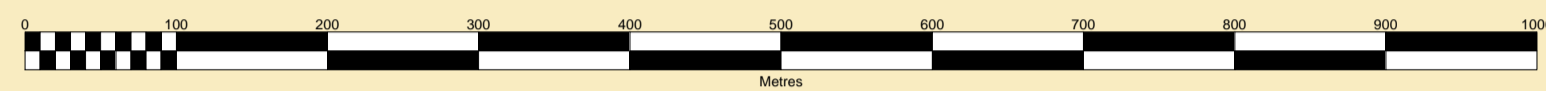
Liverpool Channel

LPC004\_3\_2026\_002  
Queen's Channel East

**POSITIONS**  
Positions are referred to OSGB36 National Grid Datum.

**UKHO & NTMS**  
When using this chart please refer to UKHO Admiralty Publications and also local Notice to Mariners and Navigational Warnings.

SCALE 1:5000 at A1



50m

45

40

35

30m

50m

45

40

35

30m

90

95

00

05

10

15

20m

90

95

00

05

10

15

20m