

Notice to Mariners N° 07 2026

River Port – New Obstruction Identified

MARINERS ARE ADVISED that the most recent surveys of the Great Yarmouth River Port have identified an obstruction in position **52°36'.0581N 001°43.5561** which is within the navigable channel adjacent to berth 28, approximately 30 metres off the quay wall.

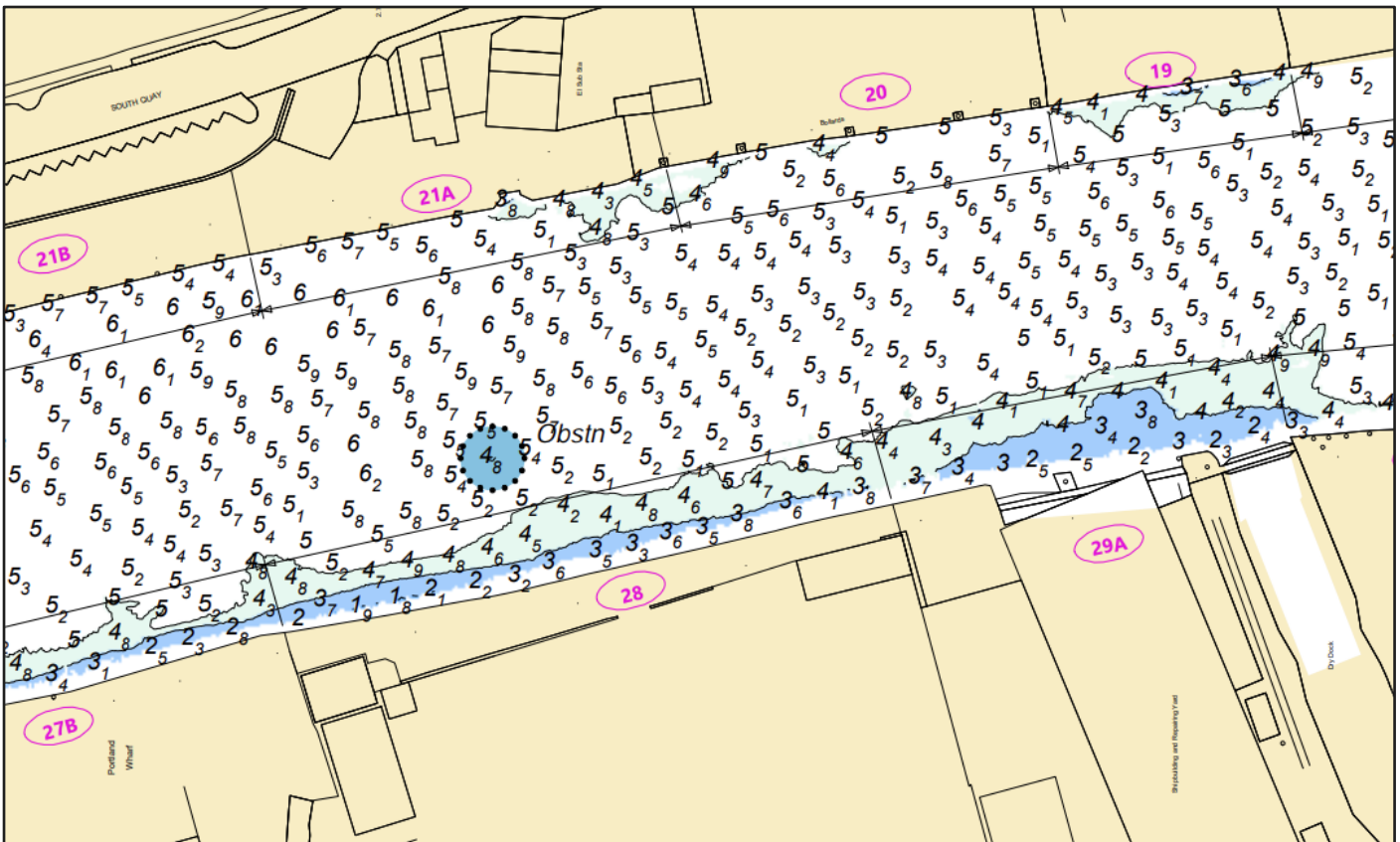


Figure 1 – Extract of GYPC chart GYA001_8_2026_001 showing newly identified obstruction

The obstruction protrudes around 1.4m above the surrounding riverbed, giving a shoalest depth of 4.8m at Chart Datum. Mariners are advised to consider this information when passage planning. Latest charts can be found at <https://www.peelports.com/marine/our-ports/port-of-east-anglia>.

Please contact the Great Yarmouth Harbour Office with any questions;

Tel: +44(0)1493 335501

Email: gyharbouoffice@peelports.com

**Marine Operations Department
Peel Ports Great Yarmouth**

Notice Issued:

04th February 2026