

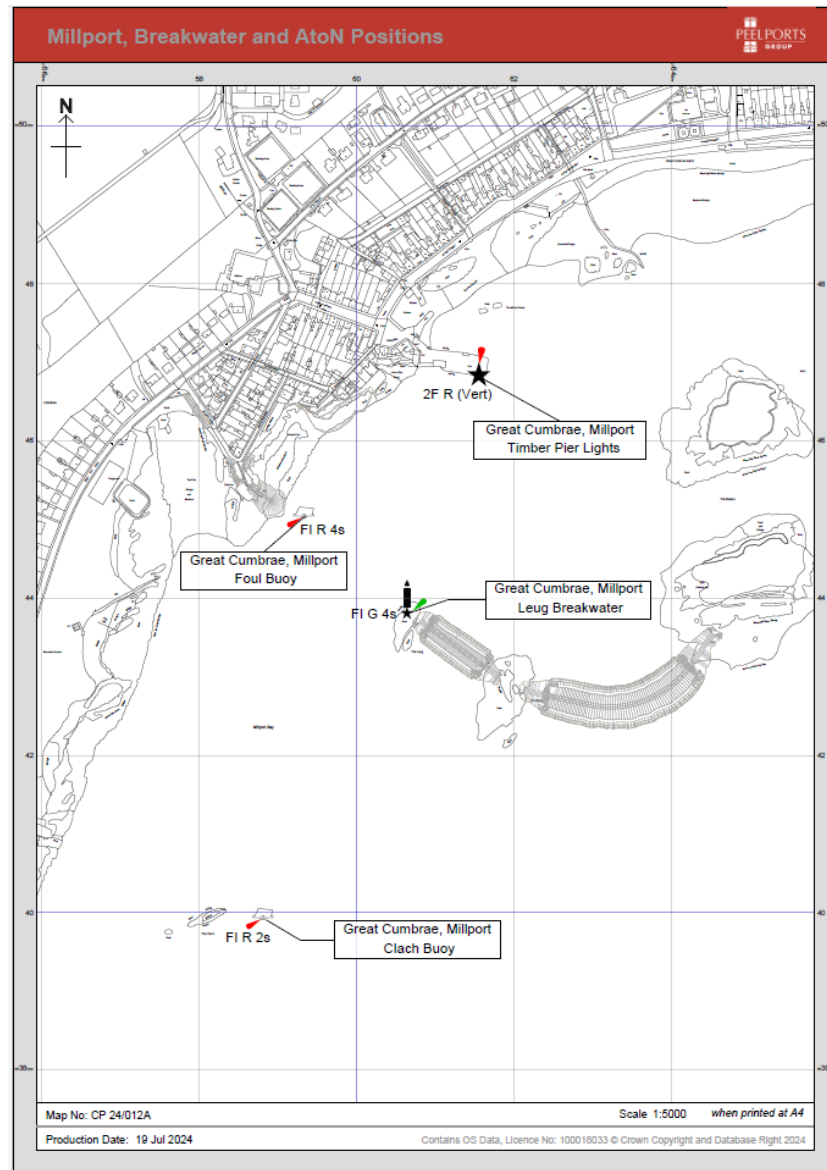
## NOTICE TO MARINERS No 75/24 FIRTH OF CLYDE - MILLPORT FLOOD PREVENTION SCHEME CHANGES TO AIDS TO NAVIGATION

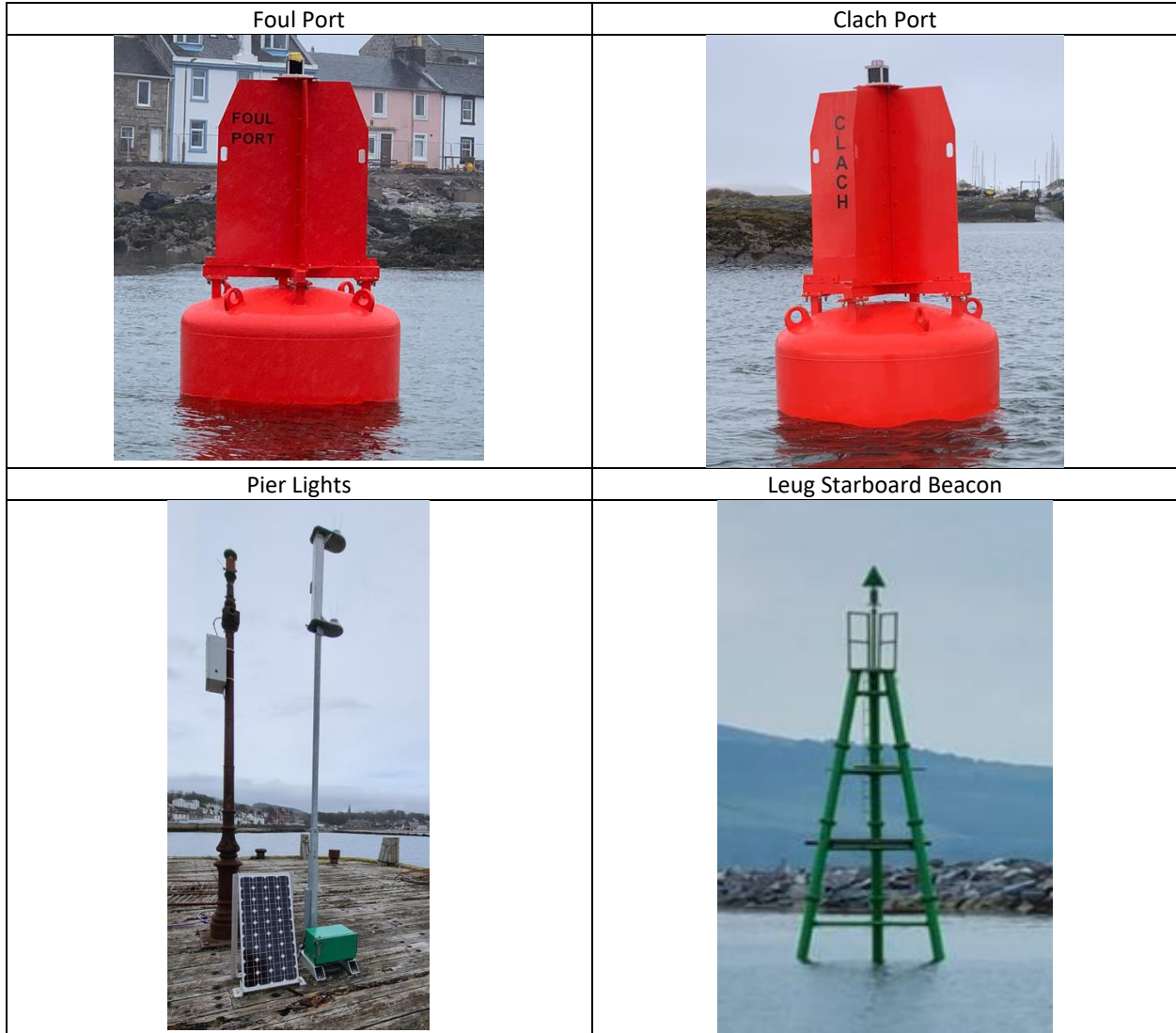
Ref NTM 32/24

Charts 1867, 1907, 2221

Mariners are advised that work to construct a new offshore breakwater as part of the Millport Flood Protection Scheme in Millport Bay has now been completed. As part of this work, changes have been made to the Aids to Navigation as detailed below:

The previous navigational aids for Millport have now been removed and, following the construction of the breakwater the new navigational aids have been installed and are now operational. The new scheme is as shown below:





AtoN Name	Position	Light Sequence	Range (nm)	Height if applicable	Comments
FOUL PORT BUOY	55°44.929'N 004°56.055'W	Fl R 4s	3.5	Floating	
CLACH PORT BUOY	55°44.653'N 004°56.084'W	Fl R 2s	3.5	Floating	
PIER LIGHTS	55°45.03'N 004°55.85'W	2F R(Vert)	5	7m	1m separation between the two lights
LEUG STARBOARD BEACON	55°44.865'N 004°55.925'W	Fl G 4s	5	7.5m (8m)	Green triangle leg Beacon



Image above shows the construction of the breakwater prior to the new Navigational Aids being installed.

Mariners are requested to proceed with caution when navigating within this area, particularly, as paper and electronic charts may still need to be updated to reflect the construction of the new breakwater and the locations of the new Navigational Aids.

Estuary Radio may be contacted on VHF Ch12 or 0151-949 6651 (Recorded Line).