

SANDON DOCK RIVER ENTRANCE (DISUSED)

Please note: Wellington Dock is no longer a working dock and is now filled in.

Please note: Bramley Moore Dock is no longer a working dock and is now filled in.

NO ACCESS THROUGH PASSAGE



MERSEY DOCKS AND HARBOUR COMPANY LTD

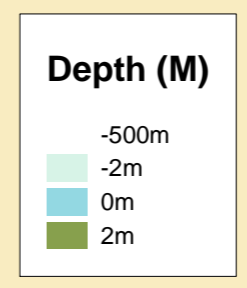
Captain Susan Cloggie-Holden MNM
Group Harbour Master

Liverpool Docks

LPD007_1_2026_001
Sandon Half Tide Dock

DEPTHS
Depths are in metres and are reduced to chart datum being 4.93m below Ordnance Datum (Newlyn), which is approximately the level of Lowest Astronomical Tide.

HEIGHTS
Heights are in metres. Underlined figures show heights above Chart Datum.

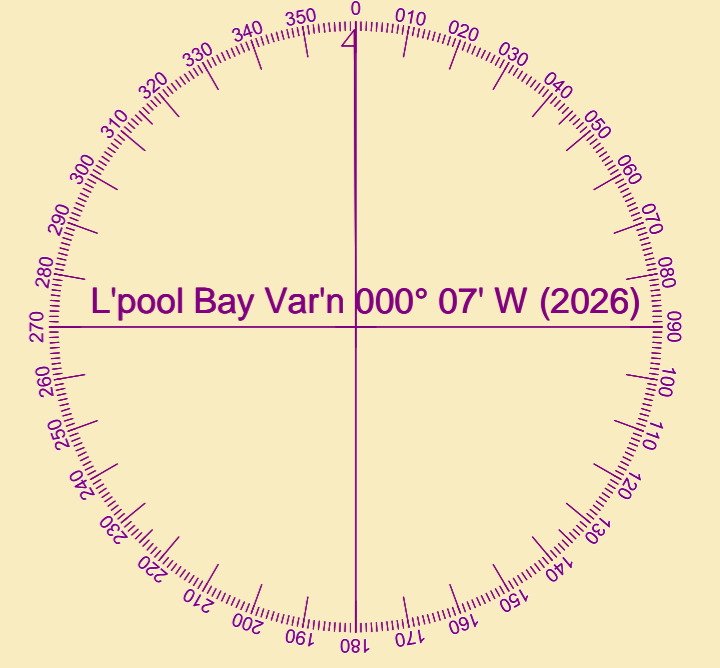


POSITIONS
Positions are referred to OSGB36 National Grid Datum.

UKHO & NTMS
When using this chart please refer to UKHO Admiralty Publications and also local Notice to Mariners and Navigational Warnings.

TOPOGRAPHY
The shore features on this chart are based largely on Ordnance Survey digital mapping data with permission of HMSO. © Crown Copyright 2026. Peel Licence Number 100018033.

FLATS & SANDBANKS
CAUTION OWING TO FREQUENT CHANGES IN DEPTHS AND POSITIONS OF FLATS AND SANDBANKS THIS CHART SHOULD BE USED WITH CAUTION.



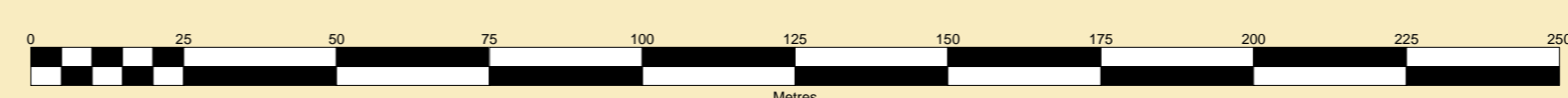
Milhouse Rocks

SALISBURY DOCK

Victoria Tower

Salisbury Pier Head

SCALE 1:1250 at A1



Surveyed by:	LKC/KH
Processed by:	LKC
Checked by:	NM
Surveyed:	13th May 2026
Issued:	14th May 2026
Vessel:	Royal Charter