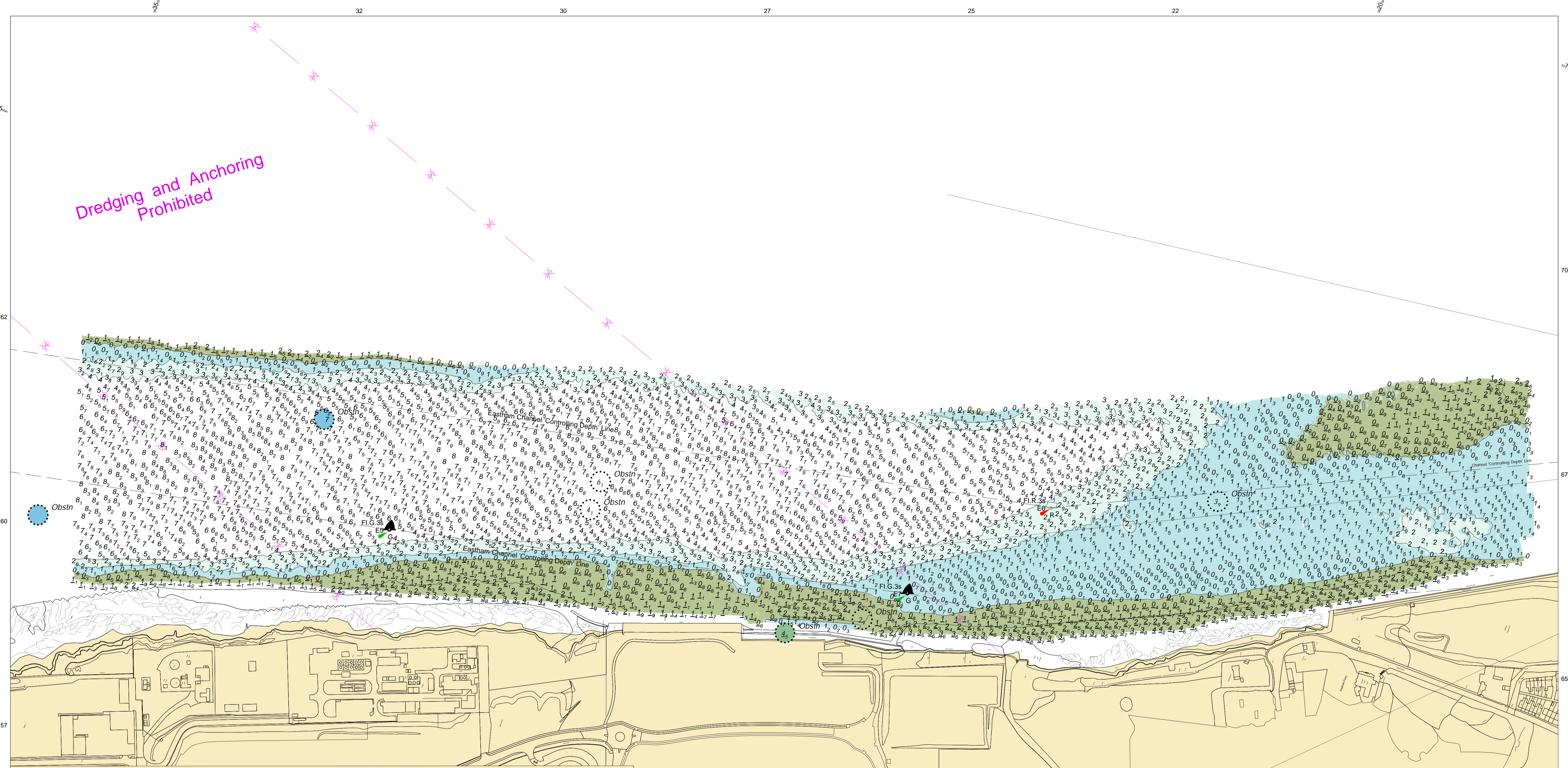


Dredging and Anchoring Prohibited



MERSEY DOCKS AND HARBOUR COMPANY LTD
 Captain Susan Cloggie-Holden MNM
 Group Harbour Master

River Mersey
 LPR003_3_2026_002
 Eastham Channel South

DEPTHS
 Depths are in metres and are reduced to chart datum being 4.93m below Ordnance Datum (Newlyn), which is approximately the level of Lowest Astronomical Tide.

HEIGHTS
 Heights are in metres. Underlined figures show heights above Chart Datum.

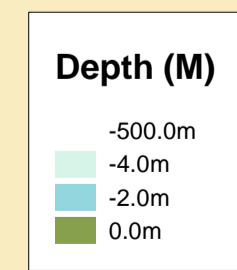
POSITIONS
 Positions are referred to OSGB36 National Grid Datum, UKHO & NTMS

When using this chart please refer to UKHO Admiralty Publications and also local Notice to Mariners and Navigational Warnings.

TOPOGRAPHY
 The shore features on this chart are based largely on Ordnance Survey digital mapping data with permission of HMSO. © Crown Copyright 2026. Peel Licence Number 100018033.

FLATS & SANDBANKS
CAUTION OWING TO FREQUENT CHANGES IN DEPTHS AND POSITIONS OF FLATS AND SANDBANKS THIS CHART SHOULD BE USED WITH CAUTION.

Surveyed by: WLH/KH
 Processed by: WLH
 Checked by: WLH
 Surveyed: 17th April 2026
 Issued: 20th April 2026
 Vessel: Royal Charter



SCALE 1:2500 at A1

