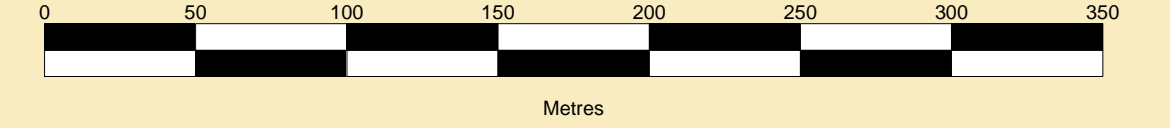


**PORT OF SHEERNESS LIMITED**  
 Gary Doyle  
 Group Harbour Master  
 Thames Estuary  
 MWA001-2\_2024\_001  
**MEDWAY APPROACH CHANNEL**

SCALE 1:2500 at A0



**DEPTHS**  
 Depths are in metres and are reduced to chart datum using 2.80m for Chatham and 2.90m for Sheerness below OD(N), with linear interpolation along channel centre line.

**HEIGHTS**  
 Heights are in metres. Underlined figures show heights in meters above Chart Datum.

**DEPTH COLOUR TABLE**

(-1.5m,0m)
(0m,5m)
(5m,10.5m)
(10.5m,12.5m)
(=12.5m)

**POSITIONS**  
 Positions are referred to WGS84 Datum UTM Zone 31N.

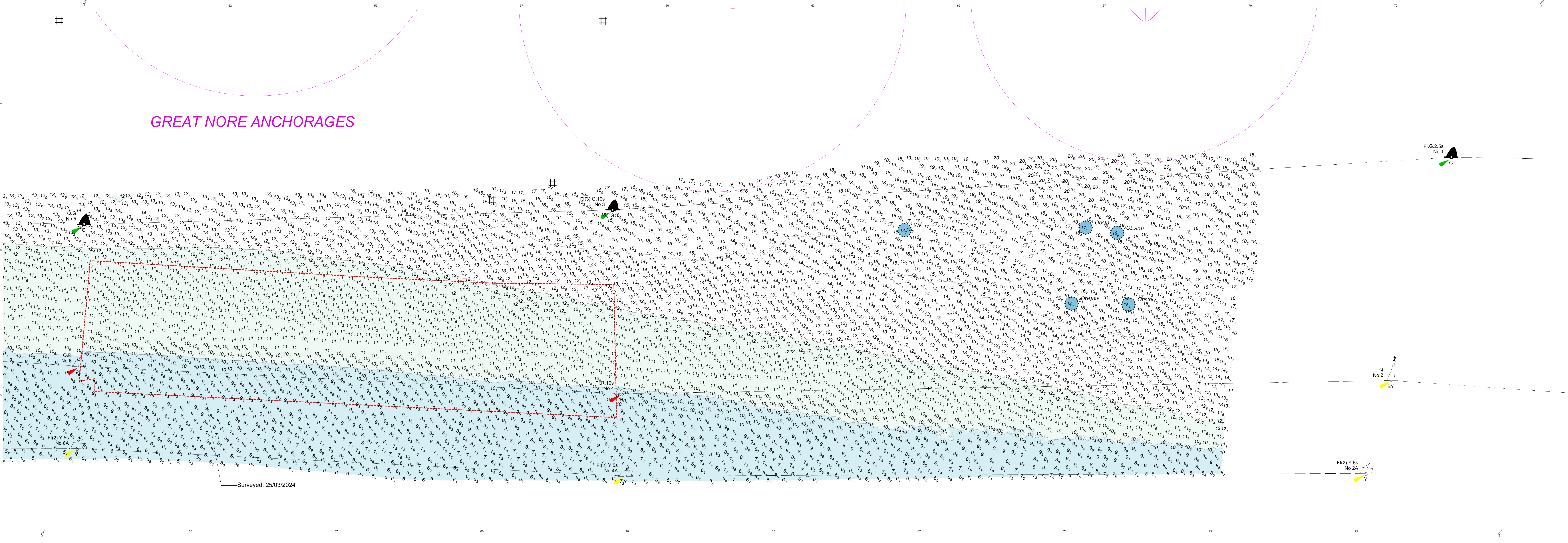
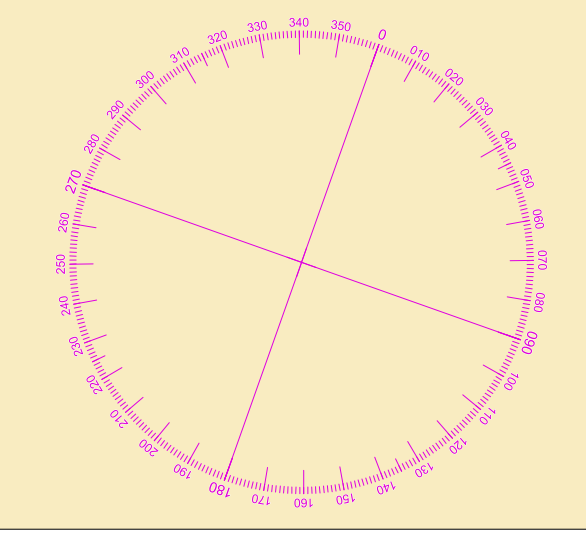
**AUTHORISED CHANNEL / ANCHORAGES**  
 The black pecked lines indicate the limits of the authorised channel and the pink pecked lines indicate the Great Nore & MAC anchorages / SS.Richard Montgomery exclusion zone.

**REPORTING POINT**  
 The Outbound London VTS Reporting Point is shown by-

**NOTES**  
 While every care has been taken in the preparation of the soundings shown on this chart, PEEL PORTS MEDWAY make no warranty as to the accuracy and will not accept any responsibility whatsoever arising from errors and omissions or for any consequence arising therefrom.

**TOPOGRAPHY**  
 The shore features on this chart are based largely on Ordnance Survey digital mapping data with permission of HMSO. © Crown Copyright 2024. Peel Licence Number 100018033.

Surveyed by: VO/PLA  
 Processed by: VO/PLA  
 Checked by: NM  
 Surveyed: 5th Feb/25th Mar 2024  
 Issued: 8th April 2024



Surveyed: 25/03/2024