



MERSEY DOCKS AND HARBOUR COMPANY LTD

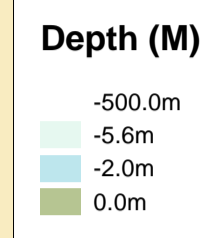
Captain Susan Cloggie-Holden MNM
Group Harbour Master

River Mersey LPR001_2_2026_006 Gladstone River Entrance

Vessel: Royal Charter
Surveyed by: WLH
Processed by: WLH
Checked by: WLH
Surveyed: 1st June 2026
Issued: 2nd June 2026
Lock Surveyed: 27th May 2026

DEPTHS
Depths are in metres and are reduced to chart datum being 4.93m below Ordnance Datum (Newlyn), which is approximately the level of Lowest Astronomical Tide.

HEIGHTS
Heights are in metres. Underlined figures show heights above Chart Datum.

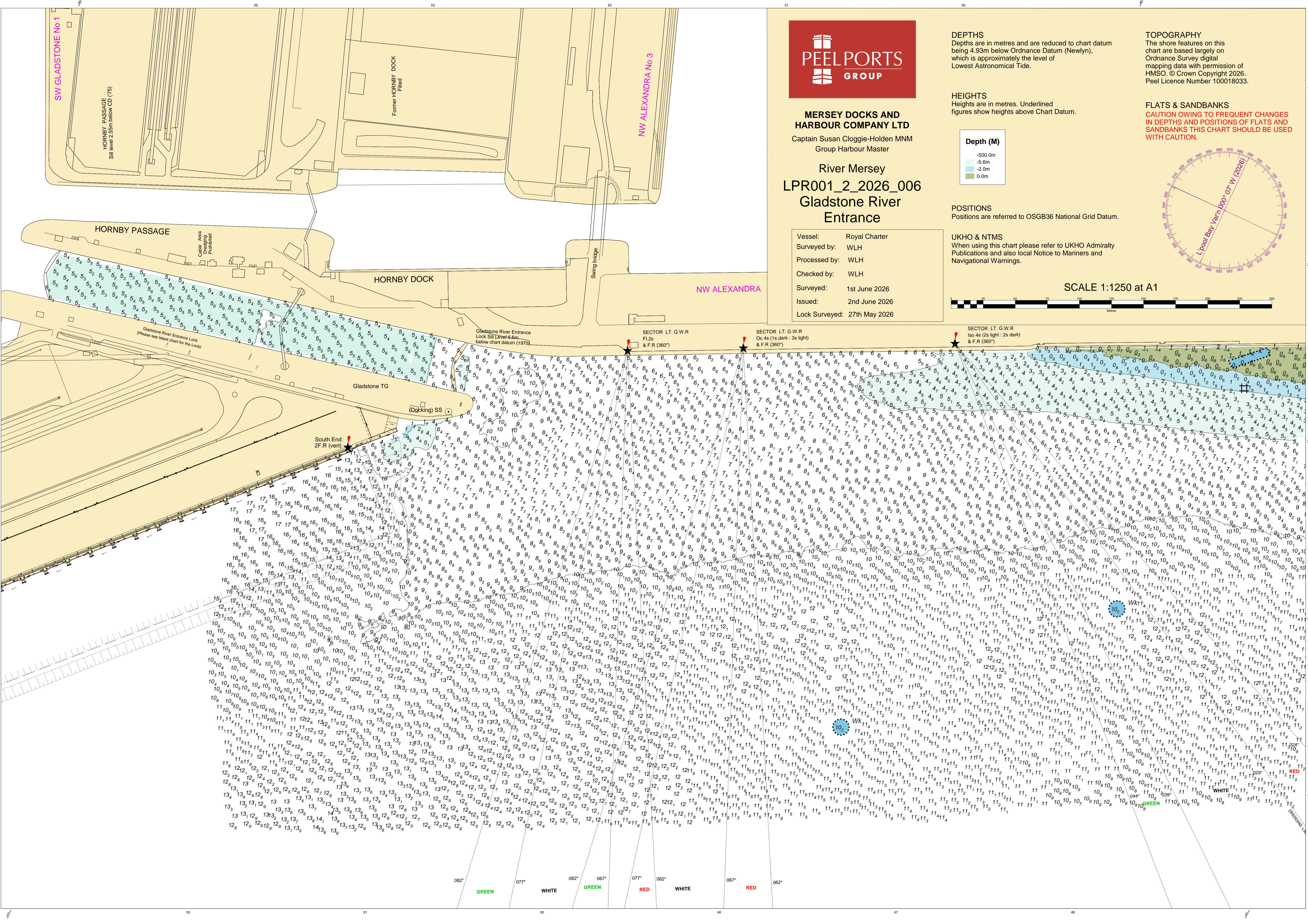
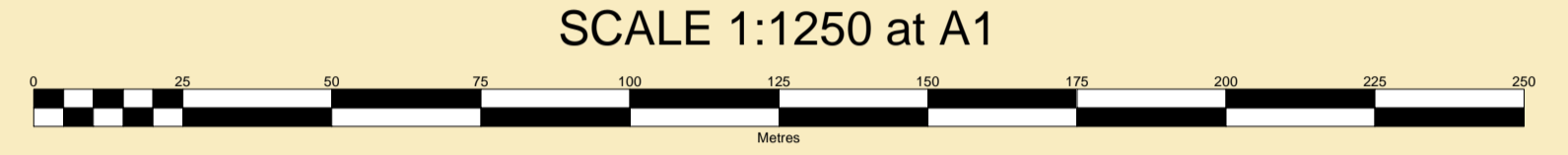
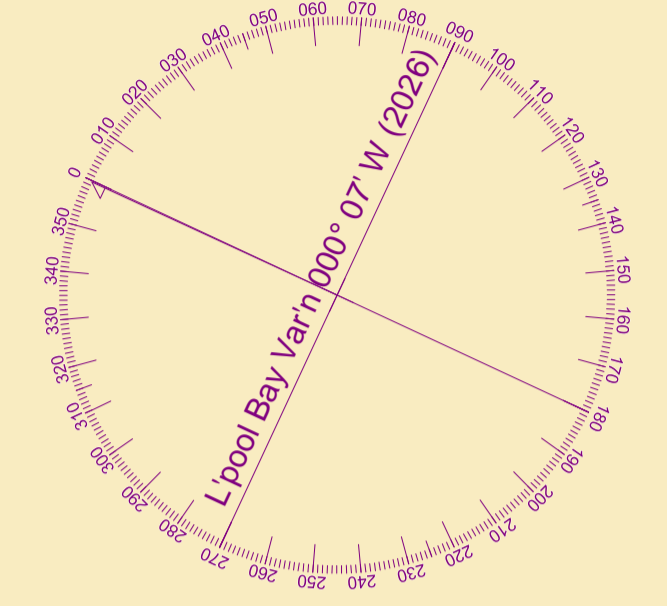


POSITIONS
Positions are referred to OSGB36 National Grid Datum.

UKHO & NTMS
When using this chart please refer to UKHO Admiralty Publications and also local Notice to Mariners and Navigational Warnings.

TOPOGRAPHY
The shore features on this chart are based largely on Ordnance Survey digital mapping data with permission of HMSO. © Crown Copyright 2026. Peel Licence Number 100018033.

FLATS & SANDBANKS
CAUTION OWING TO FREQUENT CHANGES IN DEPTHS AND POSITIONS OF FLATS AND SANDBANKS THIS CHART SHOULD BE USED WITH CAUTION.



082° GREEN 077° WHITE 082° GREEN 067° RED 062° WHITE 067° RED 062°