

NOTICE TO MARINERS



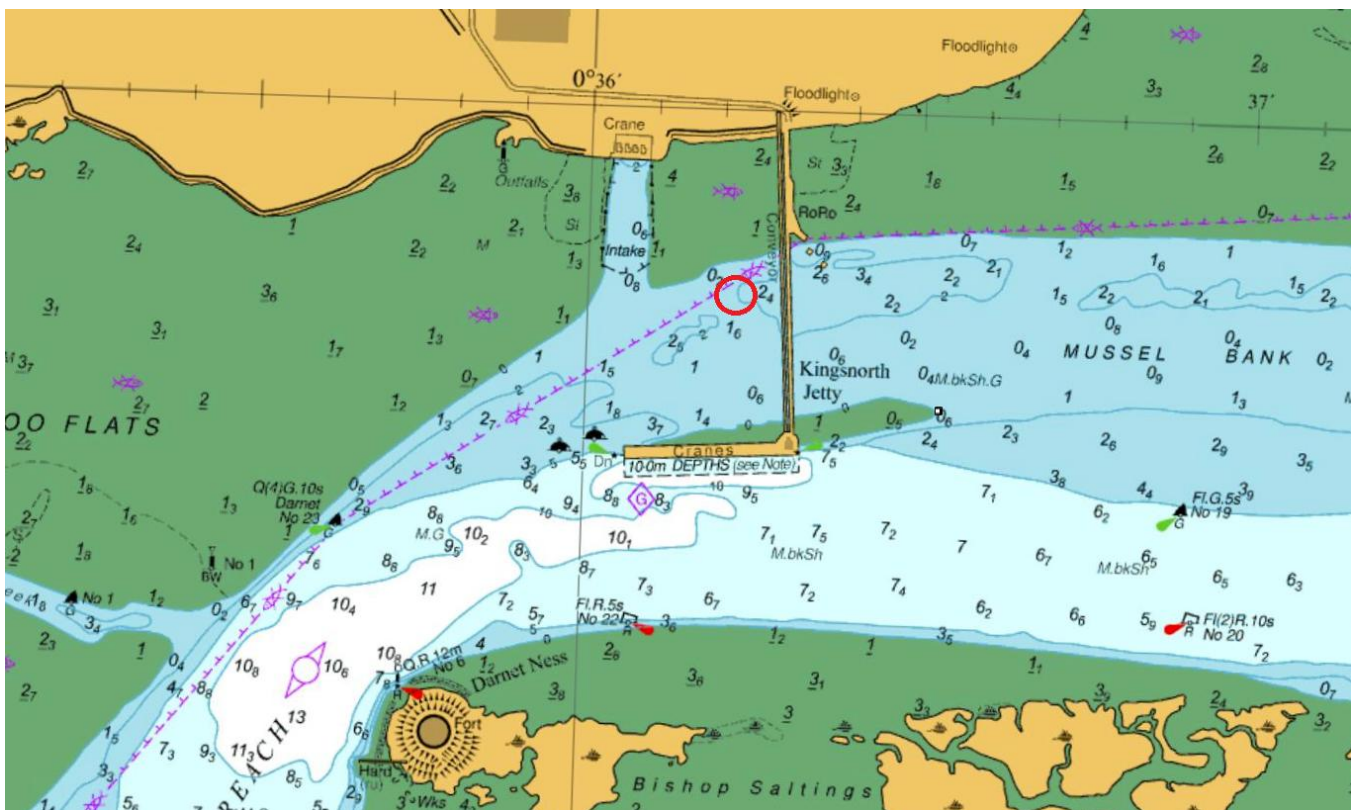
NtoM 02 - 2026

River Medway – Long Reach

Kingsnorth Jetty - Sunken Vessel

NOTICE IS HEREBY GIVEN that a sunken vessel has been reported adjacent to Kingsnorth Jetty but inshore from the jetty head. The boat is visible at all states of the tide and will shortly be marked with a pellet buoy for visibility. The obstruction currently lies in the approximate location shown below. A cancellation to this notice will be published if and when the craft is recovered.

Approximate position of the sunken vessel - 51: 24.81 N - 000:36.22 E



Issued on behalf of Port of Sheerness Ltd, the Statutory Harbour Authority for the River Medway and The Swale
Telephone calls, VHF radio traffic, CCTV and radar traffic images may be recorded at
the Peel Ports Group Port Control Centre, Liverpool.

Mast visible at HW



All vessels should keep clear of the area until the obstruction is removed.

Admiralty Chart 1835 Refers.

**Marine Operations Department
Peel Ports London Medway**

Notice Issue: 5th January 2026
Notice Expiry: N/A