

Port of Liverpool

A gateway to global trade

[Peelports.com](https://www.peelports.com)

Peel Ports Group
More Than Ports



Contents

Peel Ports Group	4
Your global gateway	6
Location and connectivity	8
Dry Bulks	10
Steels and metals	14
Project cargo	16
RoRo	17
Containers	18
Liquid Bulks	20
Manchester Ship Canal	22
Heysham Port	24
Who we work with	24
PortPlus+	26
Skilled teams delivering excellence	28
Ensuring safe and secure operations	29
Our own net zero journey	30
Partner with Port of Liverpool	31

Peel Ports Group

We are the UK's second largest port operator, safely handling 70 million tonnes of cargo each year, around 14% of the total market share.

2,000
employees across the
UK and Ireland.

7 ports &
24 terminals.

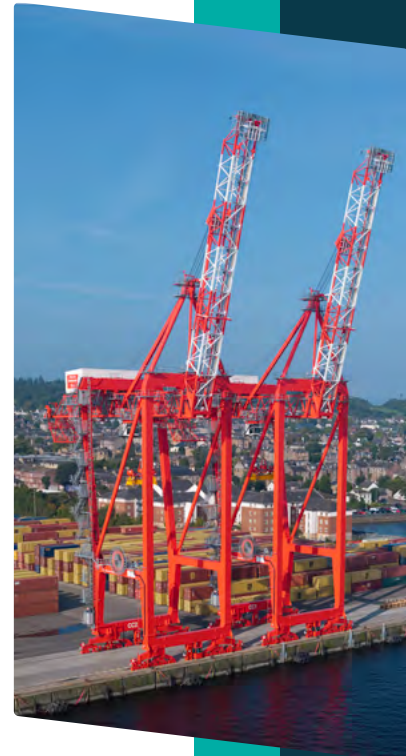
14%
UK market share.

70 million
tonnes of cargo
handled each year.

£1.5bn +
invested in the last ten
years.

7 statutory harbour
authorities.

But we're much more than ports, as a major employer in the regions where we operate, we're creating trade opportunities, supporting jobs and developing skills for the future, all while reducing the impact of our operations on the environment.



As the UK's second largest port operator, we know a thing or two about supply chains and the safe, efficient transporting of goods.

But we do much more than that.

We're a leading enabler of port-centric solutions, which means our customers benefit from a range of in-port and on-demand services.

Peel Ports Group organises its terminals by clusters in different locations, these are:

- **Clydeport**
- **Dublin**
- **Great Yarmouth**
- **Heysham**
- **Liverpool**
- **London Medway**
- **Manchester Ship Canal**
- **Birkenhead**
- **Humber Bulks Terminal**
- **Ellesmere Port**
- **Runcorn**



Our Locations

Peel Ports Group

Peel Ports Logistics

Clydeport

Dublin

Heysham

Birkenhead

Liverpool

Ellesmere Port

Runcorn

Humber Bulk Terminals

Great Yarmouth

London Medway

NORTH
SEA

ENGLISH
CHANNEL

Your Global Gateway

The Port of Liverpool is one of the world's leading ports, with a deep-rooted history and an exciting future. Constant investment in equipment, expertise and services shaped by the needs of our customers means that we can offer innovative solutions to help businesses grow and succeed.

Operating across a number of terminals the Port of Liverpool specialises in every and any type of commodity needed to fuel and power the UK.

Covering you from ship, shore and store – we have the space and ability to discharge, sort and store all of your goods regardless of the commodity.

Key facts and figures:

2,200 acres

with an additional 200 acres of development land.

100+ berths

across the port cluster

30 million

tonnes of cargo handled throughout annually.

£1 billion

invested in the last 10 years.

Commodities we handle:



Containers



Cruise



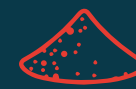
Liquid Bulks



Paper



Steel



Aggregates/Bulks



RoRo



Project Cargo



Decommissioning



Renewables



Forest Products



Energy Products



Location and connectivity

Within **50 miles** or 1 hour of Liverpool captures **12%** of the UK population.

Within **100 miles** or 2 hours of Liverpool captures **41%** of UK population.



Strategically located in the North West of England, the Port of Liverpool is ideally positioned as a gateway to the UK's industrial heartland, providing fast, efficient access to the domestic market and international trade routes. The port's location along the Irish Sea gives it an unrivalled geographic advantage for shipping to and from North America, Europe, and beyond. It's proximity to the Midlands allows for fast road and rail links, making access quick and efficient.

The port is served by major motorways, including the M53, M62, M57, and M6, facilitating fast distribution to key markets in the North and beyond. The port is also connected to the West Coast Main Line offering a highly efficient rail route for containerised goods.

Rail:

- Liverpool has a direct rail connection
- Dublin / Belfast ferry

Additional areas:

- Manchester Ship Canal
- Birkenhead
- Heysham

Our port boasts direct rail connectivity, linking to the national rail network for efficient inland freight movement. This seamless integration helps reduce road congestion and supports sustainable logistics solutions across the UK.





Dry Bulks

With extensive dry bulk handling capabilities, supporting industries such as energy, construction, agriculture and manufacturing. The Port of Liverpool is a key hub for a wide variety of dry bulks, handling commodities such as wood pellets, aggregate, cementitious products, animal feed, grain and industrial minerals.

- **More than 200,000sqm** of food grade warehousing
- **Non-hazardous** storage space
- **Multiple Deep Sea berths**
- **Dedicated state-of-the-art bulk handling equipment including ship unloaders, cranes, conveyors and hoppers**

Alexandra Complex

Now spanning two berths and 5 large bulk warehouses and a new facilities hub, the Alexandra Bulk Complex has been transformed into a modern bulk terminal within the Port of Liverpool estate. With expanded storage capacity and a purpose-built facilities hub, customers can expect faster turnaround times, and improved cargo security when bringing their bulk goods through the Port of Liverpool.

- **50,000 sqm** high quality TASOC bulk stores.
- **40,000 sqm** outside storage
- State it is Europe's largest animal feed store
- 850,000 tonnes of cargo throughput annually
- +An additional 18,000 sqm planned

Europe's Largest Animal Feed Store

One of the UK's largest animal feed storage sites in the UK, equipped with conveyor systems and wheel loaders for efficient bulk handling.

- **850,000** tonnes of cargo throughout annually.
- Automated, discharge and weighing.
- State of the art weighbridges and computer systems.





Royal Seaforth Grain terminal

With state-of-the-art equipment and high-capacity storage silos, the terminal efficiently manages the import, export, and distribution of a variety of grains. Serving as a vital link in the UK's food supply chain, it offers multimodal transport connections, ensuring smooth and timely delivery of grain to markets across the country.

- **Fully Automated**
conveyor and weighing systems
- **1200t per hour**
Specialised Siwertell discharge system
- **1000tph**
for the Siwertell

Biomass

Experienced in handling a diverse range of biomass materials, including wood pellets, wood chips, agricultural residues, and dedicated energy crops. Located at Royal Seaforth Dock, the port is equipped to manage large volumes of these renewable energy fuels, supporting major customers like Drax Power Station.

- **Avg. 2m tonnes**
of wood pellets each year.
- **Ability to store and transport**
efficiently and safely
- **160,000 tonnes**
of storage dedicated to Biomass
- **Rail connected**



Steels and Metals

Closest deep-sea port to the UK's industrial heartland

With more than 41% of the UK population living within 2 hours or 100 miles of the port, Liverpool is the most optimally located port to serve both the North and Midlands of the UK.

Our metals business is at the forefront to service the Supply Chains for the automotive, aerospace, construction and FMCG sectors.

- **Fully automated**
steel coil handling facility at North 3 Canada Dock
- **3 mobile harbour cranes**
- **Deep water berths**
at Seaforth S9 and S10 and North 3 Canada Docks.



Port Facilities

Between the two deep sea berths at Liverpool located at Canada and Seaforth Docks we offer:

- 12,000 sqm fully automated coil handling warehouse at Canada Dock
- 220,000 tonnes capacity in warehouse storage on quay
- 65,000 tonnes capacity of outside storage
- Bonded Storage
- Additional off quay warehouse storage
- Ability to handle steel coil, rebar, plate, beams, slab and other bulk metal products
- 3 mobile harbour cranes
- Rail, road and short sea solutions for onward carriage





Project cargo

With multiple deep-water berths, the Port of Liverpool offers flexibility to accommodate large project vessels at short notice. Our experienced, dedicated team tailors commercial packages to meet your needs, supported by extensive storage and handling space.

Whether lifting oversized cargo with floating cranes or transporting inland via the Manchester Ship Canal, we have the scale and expertise to deliver.

- **Multiple deep-water berths for large project vessels**
- **End-to-end solutions through Port Plus+ including:**
 - Chartering and ships agency
 - Customs clearance support
 - Storage and onward distribution
- **Mobile cranes and heavy-duty quaysides for heavy and out-of-gauge cargo**
- **Access to the 'Green Highway' of the Manchester Ship Canal, reducing CO2 emissions and adding social value**



Renewable Energy



Powerplants



Construction equipment



Aerospace



Farming equipment



Heavy industrial components



Engineering

RoRo

The Port of Liverpool has multiple strategically located terminals offering an unparalleled doorway from the heart of mainland Britain. Our direct routes service Ireland's two capital cities, the Isle of Man, North America and North Western Spain.

- **Secure compounds**
- **Ability to handle accompanied and unaccompanied traffic**





Containers

Open in 2016, Liverpool2 was a £400m investment into the Port of Liverpool container division. Equipped with 8 Megamax cranes and 22 cantilever rail-mounted gantry cranes Liverpool2 has the ability to handle event the largest of ships.

To speak with our containers team please visit:

peelports.com/contact-us

Multi-user warehousing

One of the most recent investments in our indoor storage facilities is our MUW, available for all types of businesses, regardless of size this is a key service in helping our customers process, store and develop. These warehouses are located to support efficient distribution and are equipped with modern amenities for handling both bulk and general cargo. With easy access to road, rail, and sea transport, the port's warehouses ensure seamless integration into the supply chain for domestic and international customers.

- **40,000 sqm** with an additional 200 sqm of land.
- **30 million** tonnes of cargo throughout annually.

Liverpool2

Open in 2016, Liverpool2 was a £400m investment into the Port of Liverpool container division. Equipped with 8 Megamax cranes and 22 cantilever rail-mounted gantry cranes Liverpool2 has the ability to handle event the largest of ships.

To speak with our containers team please reach out to:

- **2,200 sqm with an additional 200 sqm of land.**
- **30 million tonnes of cargo throughout annually.**

Royal Seaforth Container Terminal

Opened in 1971-72 was purpose built for trade, the terminal is connected to the wider UK via rail and road.

To speak with our containers team please reach out to:

- **8 STS gantry cranes**
- **820m quay length**
- **12.8m draft**





Liverpool Bulk Liquids

The Port of Liverpool has extensive liquid bulk handling facilities, including the Tranmere Oil Terminal, and further facilities at QEII dock, Canada dock, Gladstone dock, Huskisson dock, Birkenhead dock and the Manchester Ship Canal.

- **30 million tonnes of cargo throughout annually.**
- **More than 1,000,000 m3 of storage**

At Port of Liverpool we see ourselves as innovators in the bulk liquids sector. The Port of Liverpool and the Manchester Ship Canal combine to create a significant hub for bulk liquids, including petrochemical cargoes. We have over 400 vessels loading and discharging liquid bulks in Port of Liverpool each year.

With the experience of partnering world class brands such as Essar, United Molasses, ED&F Man, Chane, Olleco, Qualichem, Exolum and others, it doesn't matter whether your bulk liquids are fuels, chemicals, oil/fats, food grade or other specialised products, Liverpool will have a solution for your requirements.

Our network of bulk liquid facilities in conjunction with additional land space are designed with scalability in mind, ensuring capacity to accommodate future customer growth and evolving market needs.





Manchester Ship Canal:

Linking Liverpool to the Heart of the North

The Manchester Ship Canal is a unique, sustainable freight corridor, connecting the Port of Liverpool directly with key destinations along its 36-mile route. By taking trucks off congested roads, it offers a greener, more reliable way to move cargo inland while maintaining full connectivity to the UK and global markets.

- **36 miles of navigable waterway – providing a direct freight link between the Port of Liverpool and Greater Manchester.**
- **Multi-modal terminals along the route – enabling seamless transfer between ship, road, and rail.**
- **Capacity to remove thousands of HGV journeys annually – reducing congestion, emissions, and supply chain costs.**

Heysham Port:

A Strategic RoRo Hub

Heysham Port is one of the UK's leading RoRo gateways, strengthened by significant investment in infrastructure and capacity. With streamlined operations and a complete stevedoring service, we ensure your cargo is expertly managed from arrival to departure – offering operators an efficient solution, particularly in times of driver shortages.

- **3 dedicated RoRo berths – ensuring high-frequency sailings and reduced turnaround times.**
- **Over 80,000m² of storage space – providing flexibility for unaccompanied freight and increased operational resilience.**
- **24/7 stevedoring and terminal operations – delivering reliable cargo handling around the clock.**



PortPlus+

Offered across each of our port locations, PortPlus+ highlights what we do beyond exports and imports. Peel Ports Group is more than ports. We can provide solutions and logistics across the entire supply chain.

Keep all of your logistics solutions under one roof, Store, Process, Develop and Move with PortPlus+.

+Store

Safely store and protect your goods with flexible on-site warehousing space and on-demand capacity.



+Process

Let our experts take control of your cargo, with added-value handling and processing solutions.



+Move

Take advantage of our end to end cargo movement services, across road, rail and sea.



+Develop

Utilise our secure port locations with cost efficient and bespoke property options.





Skilled teams delivering excellence

- Robust health & safety culture.
- Specialist employees who are experts in key areas such as marine and cargo lifting and handling operations and NPORS.



Ensuring safe and secure operations

- Security measures: CCTV, 24/7 monitoring and on-site security guards.
- Compliance with ISPS and environmental regulations.



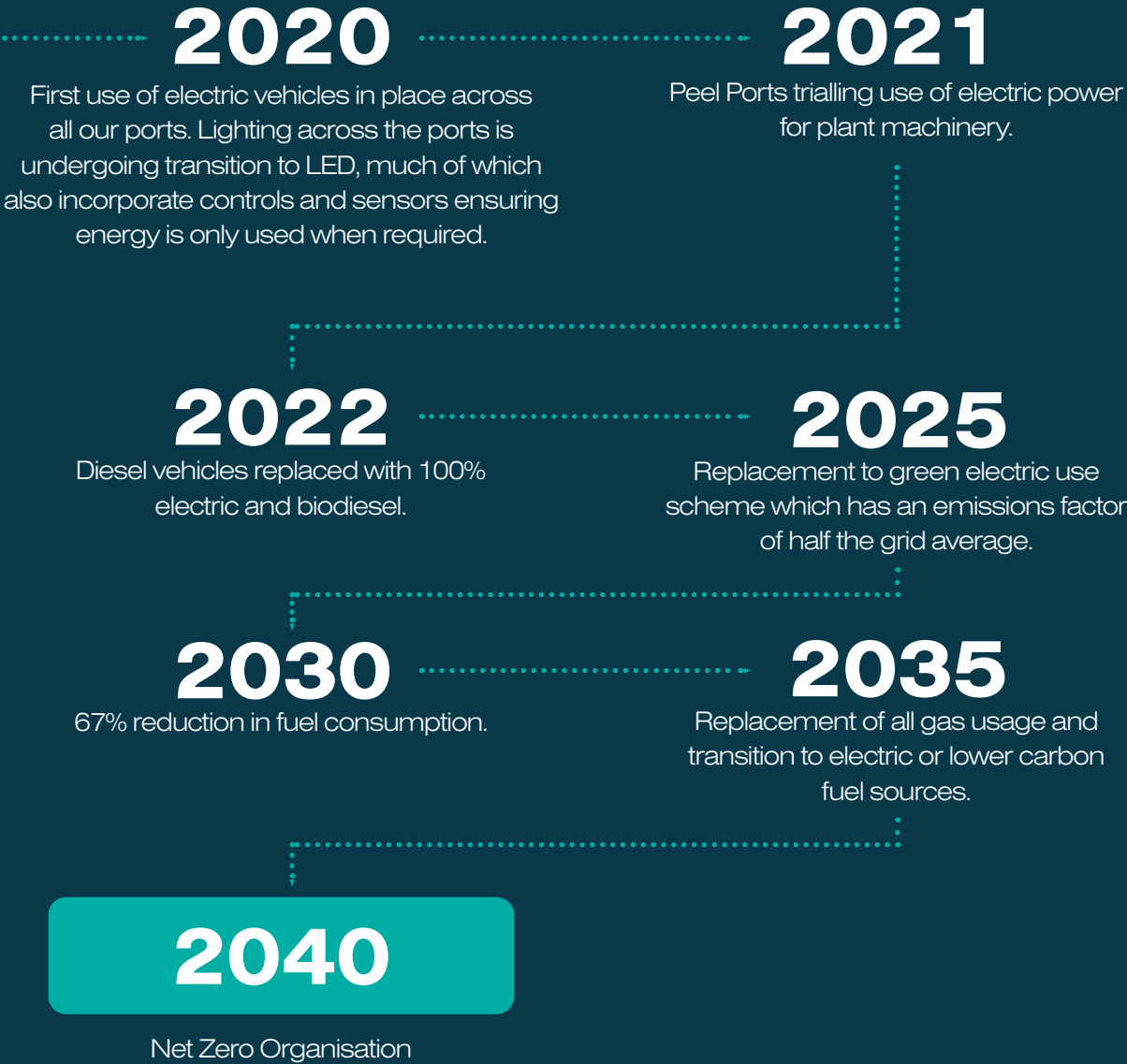
LEADING THE WAY

Our own net zero journey

At Peel Ports Group, sustainability is at the heart of all we do. As one of the UK's largest port operators, and a major employer in the areas where we operate, we are fully aware of the role we need to play in driving a sustainable agenda.

On an environmental front, we've made an industry-leading commitment to become a net zero port operator by 2040, ten years ahead of UK government targets.

Since then, and just in the last three years, we have reduced our operational Scope 1 and 2 emissions by over 40%. Our approach and leadership in this area has been widely recognised by peers with a raft of industry awards and accolades.



Partner with Port of Liverpool

Get in touch to explore how we can support your business growth.
portofliverpoolsales@Peelports.com

Port of Liverpool
Port of Liverpool Head Office
Maritime Centre
Liverpool
L21 1LA
Phone Number - +44 (0)151 949 6000

Peel Ports Group
Head Office
Maritime Centre
Liverpool
L21 1LA
Phone Number - +44 (0)151 949 6000

Download
Your digital copy here:



