

**MERSEY DOCKS AND HARBOUR COMPANY LTD**  
 GARY DOYLE  
 Group Harbour Master  
 Liverpool Docks  
 LPD002\_2\_2023\_001  
 Gladstone Lock

**DEPTHS**  
 Depths are in metres and are reduced to chart datum being 4.93m below Ordnance Datum (Newlyn), which is approximately the level of Lowest Astronomical Tide.

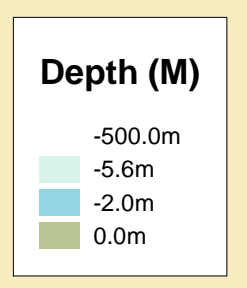
**HEIGHTS**  
 Heights are in metres. Underlined figures show heights above Chart Datum.

**POSITIONS**  
 Positions are referred to OSGB36 National Grid Datum.

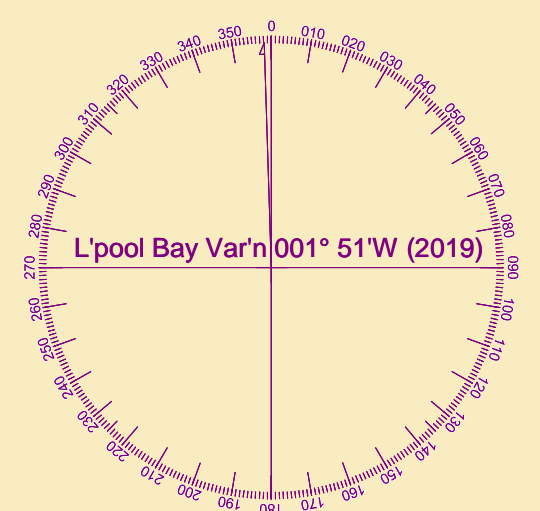
**UKHO & NTMS**  
 When using this chart please refer to UKHO Admiralty Publications and also local Notice to Mariners and Navigational Warnings.

**TOPOGRAPHY**  
 The shore features on this chart are based largely on Ordnance Survey digital mapping data with permission of HMSO. © Crown Copyright 2023. Peel Licence Number 100018033.

**FLATS & SANDBANKS**  
**CAUTION OWING TO FREQUENT CHANGES IN DEPTHS AND POSITIONS OF FLATS AND SANDBANKS THIS CHART SHOULD BE USED WITH CAUTION.**



Vessel:	Royal Charter
Surveyed by:	NM
Processed by:	NM
Checked by:	NM
Surveyed:	18th January 2023
Issued:	19th January 2023



SCALE 1:500 at A1

