



MERSEY DOCKS AND HARBOUR COMPANY LTD

Gary Doyle
Group Harbour Master

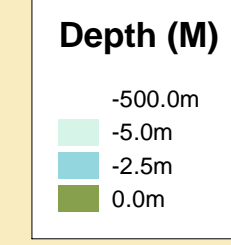
River Mersey

**LPR002_4_2023_002
Cammell Laird's Wall**

Surveyed by: VO
Processed by: VO
Checked by: WLH
Surveyed: 20th March 2023
Issued: 31st March 2023

DEPTHS
Depths are in metres and are reduced to chart datum being 4.93m below Ordnance Datum (Newlyn), which is approximately the level of Lowest Astronomical Tide.

HEIGHTS
Heights are in metres. Underlined figures show heights above Chart Datum.

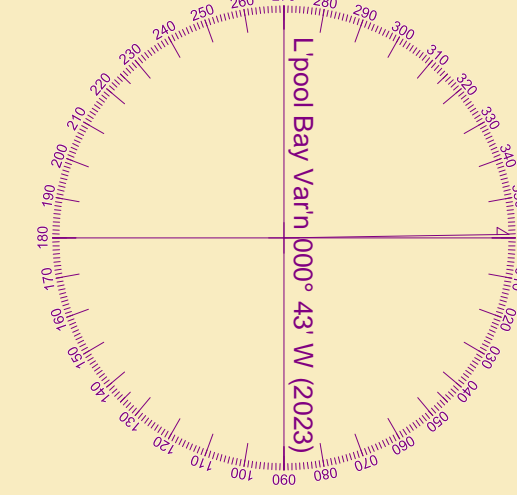


POSITIONS
Positions are referred to OSGB36 National Grid Datum.

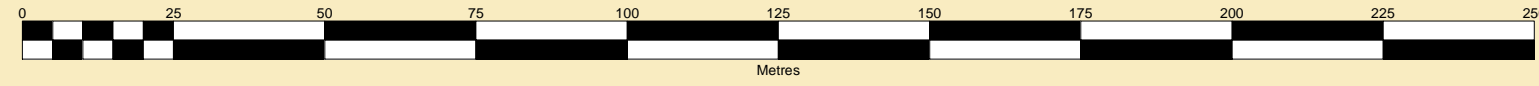
UKHO & NTMS
When using this chart please refer to UKHO Admiralty Publications and also local Notice to Mariners and Navigational Warnings.

TOPOGRAPHY
The shore features on this chart are based largely on Ordnance Survey digital mapping data with permission of HMSO. © Crown Copyright 2023. Peel Licence Number 100018033.

FLATS & SANDBANKS
CAUTION OWING TO FREQUENT CHANGES IN DEPTHS AND POSITIONS OF FLATS AND SANDBANKS THIS CHART SHOULD BE USED WITH CAUTION.



SCALE 1:1250 at A1



Pontoon and Moorings in this area
(see MD&HC Ltd Notice to Mariners No 24 - 2012.)

Sill level 1.55m below CD(75)

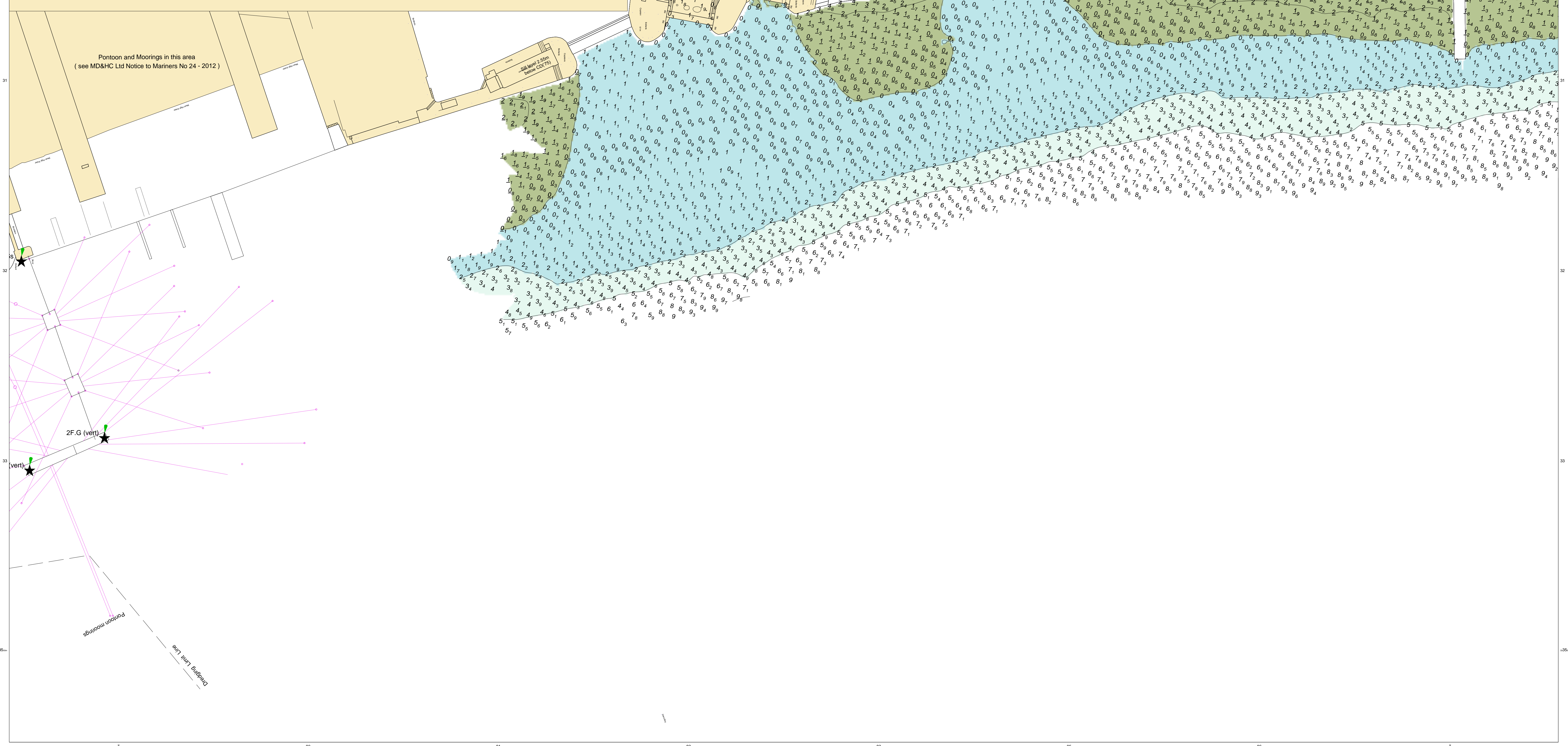
No 7 Sill level 0.55m below CD(75)
Graving Dock (No 7)

No 8 Sill level 0.16m above CD(75)
Graving Dock (No 8)

The Princess Dock
Graving Dock (No 5)

No 6 Sill level 1.02m below CD(75)
Graving Dock (No 6)

No 4 Sill level 1.71m above CD(75)
Graving Dock (No 4)



2F.G (vert)

(vert)

Pontoon Moorings
Dredging Limit Line