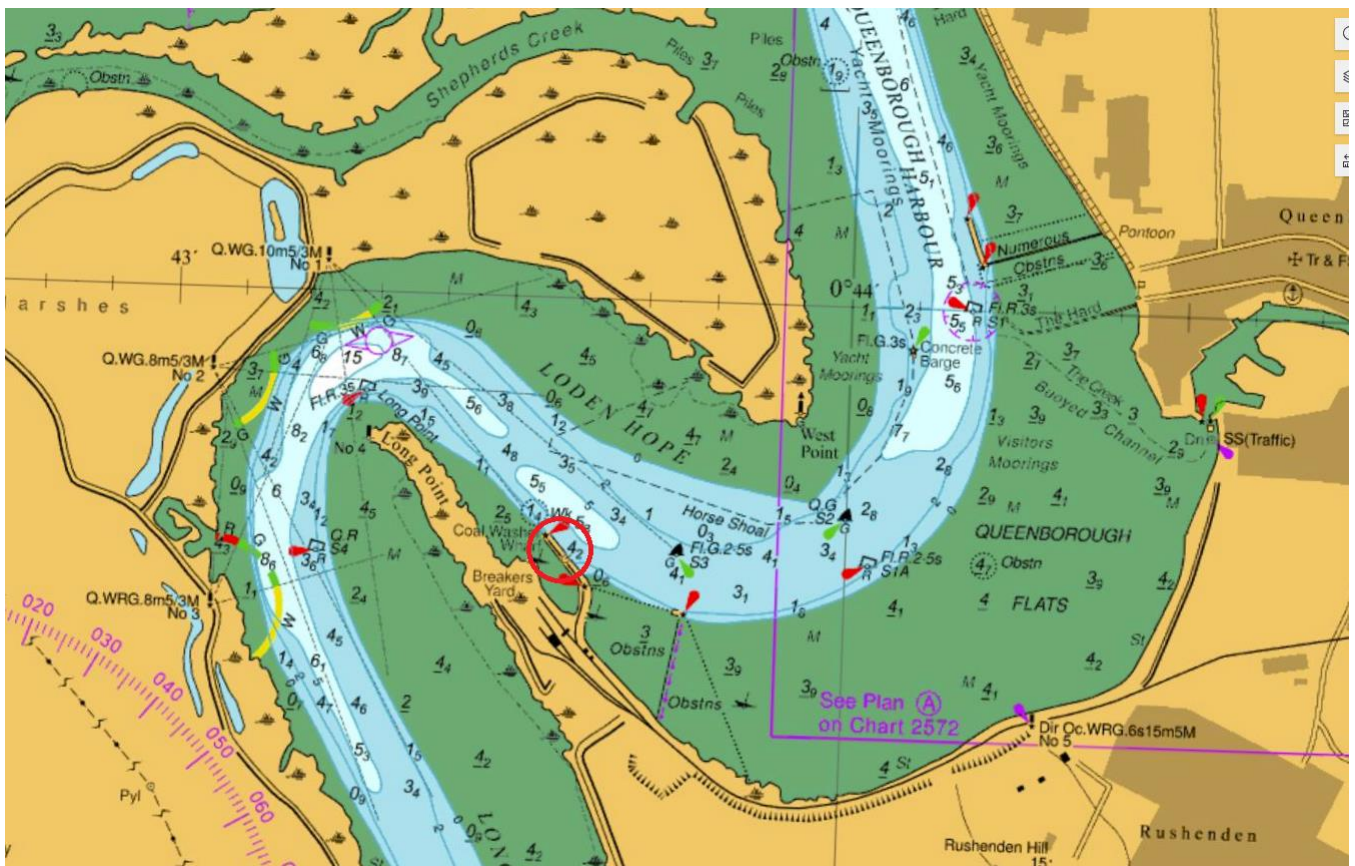


NOTICE TO MARINERS

NtoM 17 - 2025

The Swale – Loden Hope – Washer Wharf Moored Pontoon & Narrowed Channel

NOTICE IS HEREBY GIVEN that a pontoon which has been temporarily secured at Washer Wharf is restricting available sea room in the main navigable channel of Loden Hope. The pontoon measures approximately 72m x 30m and is laying alongside the wharf, due to it's size, available sea room is compromised. Until an alternative location is found for the pontoon, it's outboard extremities will be marked with an upstream and downstream fixed yellow light and fixed white light in the centre.



All vessels passing Washer Wharf should navigate with caution.

Admiralty Chart : 2572 refers



Further information may be obtained from Medway VTS on VHF Channel 74, call sign “Medway VTS” or telephone 0151 949 6148 or 0151 949 6650 **(Recorded Lines)**

**Marine Operations Department
Peel Ports London Medway**

Notice Issued:
Notice Expiry:

22nd May 2025.