

NOTICE TO MARINERS

No52 – 2022

PORT OF LIVERPOOL

UNCREWED SURVEY VESSEL OPERATIONS

NOTICE IS HEREBY GIVEN that surveys using Uncrewed Survey Vessels (USV) are being undertaken in and around the prohibited anchorage to the west of the entrance to the Queens Channel.

The USV will survey by running lines north to south and south to north at an average transit speed of 2.5 knots. The USV are equipped with AIS, radar reflectors and navigation lights.

The USV will be operated in accordance with the COLREGs; however, so far as is reasonably practicable, mariners should give the USV a wide berth.

Whilst operating in this survey area, the USV will be accompanied by the guard vessel *Silver Harvester*. Matters regarding the USV (e.g. passing manoeuvres) must be addressed to the *Silver Harvester*, which will maintain a listening watch on VHF Ch. 12 and 16.

The survey area is divided into zones and Mersey VTS will issue local navigation warnings to advise mariners of the zone in which the USV will be operating.

Details of the USV, the *Silver Harvester* and the survey area can be found in the accompanying notice issued by the survey contractor, XOCEAN.

Weather permitting, the survey operations in this area are expected to be completed by 21 May 2022. However, this Notice will remain in force until withdrawn.

MOM/778/088/L002a

2 May 2022

NOTICE TO MARINERS: UNMANNED SURFACE VESSEL (USV)

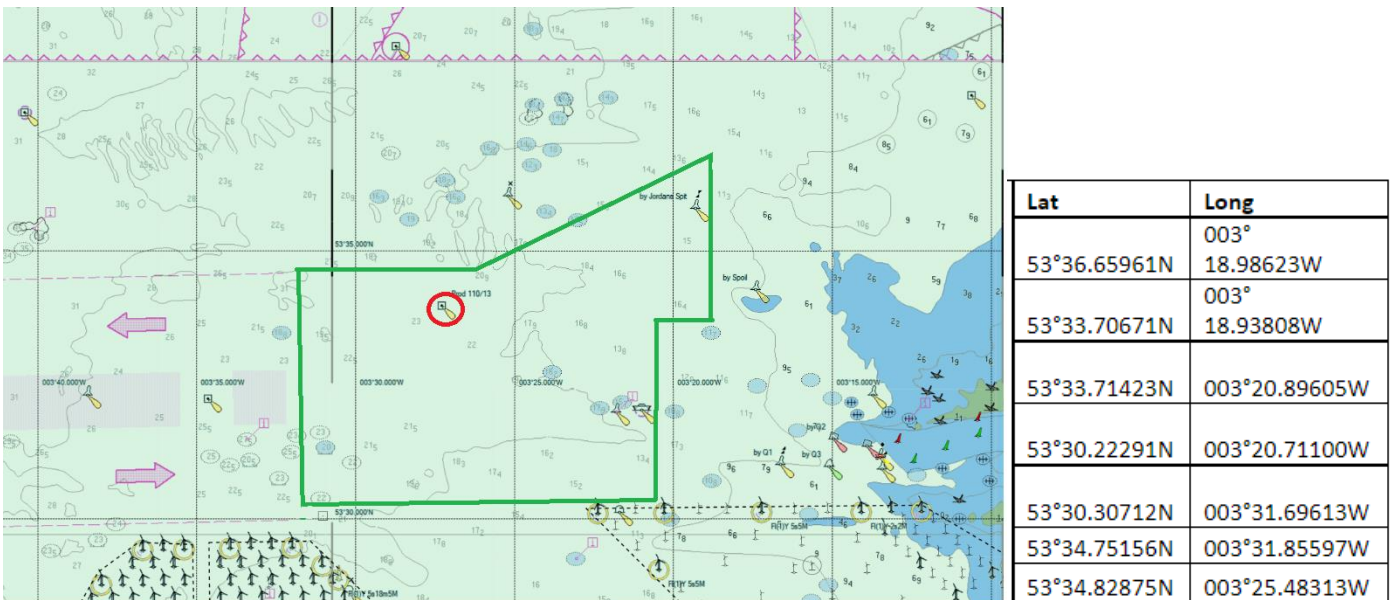
Activity: Operations of a remotely piloted Uncrewed Surface Vessel (USV) are planned out of Rhyl, Fleetwood and Beaumaris ports. There will be up to 4 USV's operational at any one time. Vessel details are listed in table 2 below. This activity is part of the wider survey works issued by XOCEAN on the 18th March 2022 (File ref: 00469-SHW-Notice to Mariners XOCEAN-v2)

Dates: Operations are currently ongoing in the wider area. Operations in the area below will take place, subject to weather from the 28th April 2022 to the 21st May 2022

A support vessel will escort the USV from the mobilisation port to its limits.

Although the vessel is uncrewed, it is managed throughout the 24-hour operation, piloted remotely using 360 degree cameras and other navigational aids.

Figure 1: Operational area



The operational area is divided up into zones. The zones and their coordinates are shown in Figure 2 and Table 1 below. Initially the USV operations will be limited to D3, H8 and H7 as indicated below. The USV will transit North to south and back again within the zones to complete the survey.

Figure 2 : Operational area with Zones

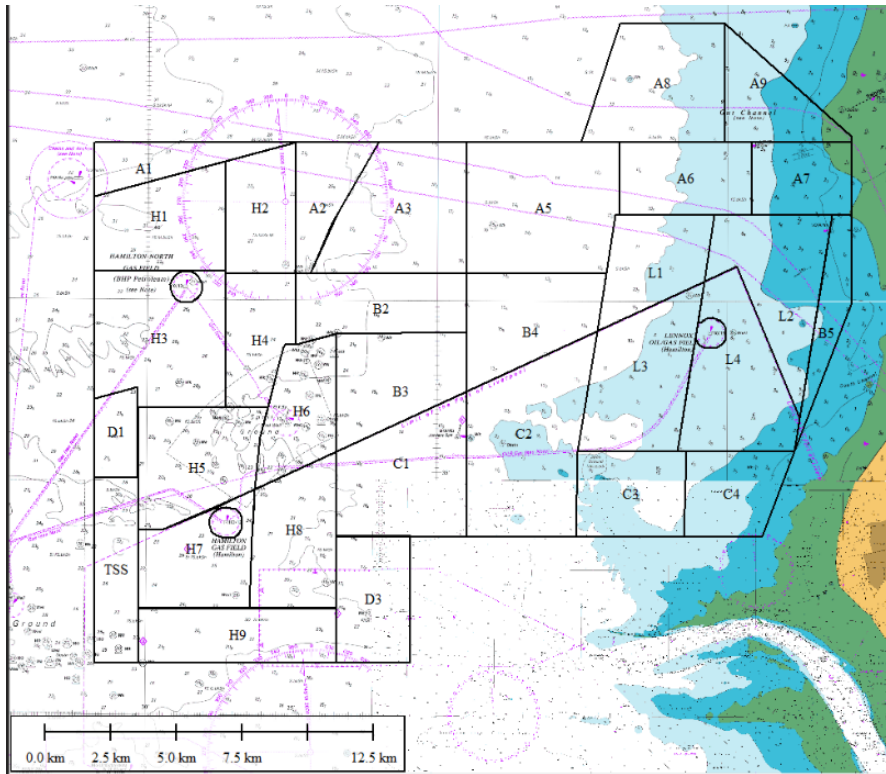


Table 1 : Zone Co-ordinates

D3		H8		H7		H9		TSS	
LATITUDE	LONGITUDE	LATITUDE	LONGITUDE	LATITUDE	LONGITUDE	LATITUDE	LONGITUDE	LATITUDE	LONGITUDE
53° 33.72638' N	3° 23.35421' W	53° 32.22558' N	3° 26.35032' W	53° 32.22558' N	3° 26.35032' W	53° 31.11279' N	3° 30.13995' W	53° 34.90630' N	3° 31.71834' W
53° 33.73414' N	3° 20.83383' W	53° 32.26060' N	3° 23.33249' W	53° 34.68055' N	3° 26.19881' W	53° 31.13753' N	3° 23.33346' W	53° 34.91635' N	3° 30.20923' W
53° 31.13753' N	3° 23.33346' W	53° 35.46793' N	3° 23.38006' W	53° 33.83862' N	3° 29.38176' W	53° 32.23164' N	3° 30.15906' W	53° 31.10626' N	3° 31.67303' W
53° 31.14328' N	3° 20.79605' W	53° 34.68055' N	3° 26.19881' W	53° 33.85170' N	3° 30.19243' W	53° 32.26117' N	3° 23.33250' W	53° 31.11279' N	3° 30.13995' W

Table 2: USV details

Vessel Name	X 04 Uncrewed	X 06 Uncrewed	X 09 Uncrewed	X 14 Uncrewed
MMSI	121012721	232025477	232027632	232025680
dimensions	4.5 x 2.2m	4.5 x 2.2m	4.5 x 2.2m	4.5 x 2.2m
Speed	3.5kts	3.5kts	3.5kts	3.5kts
Draft	1.5m	1.5m	1.5m	1.5m
Tonnage	750kg	750kg	750kg	750kg

The USV sends real time images and situational awareness data over satellite to a team of operators keeping watch and controlling the vessel remotely 24/7.


Safety Precautions: The USV is equipped with the following to make it conspicuous to other marine traffic:

- AIS
- Navigation Lights & Sound Signal
- Active Radar Reflector

- Superstructure Painted Yellow

Seafarers are asked to avoid contact with the vessel and be aware of the operational area during this period.

The GV Silver Harvester will act as a guard vessel for the operation.

<p>Guard Vessel:</p> <p>GV Silver Harvester</p> 	<p>Skipper: Michael Connaghan</p> <p>Tel: +442841180010 Mob: +447809716121</p> <p>silverharvestern71@gmail.com</p>	<p>Callsign: MMAS9</p>	<p>MMSI: 235009094</p>
---	--	----------------------------	----------------------------

XOCEAN - Emergency Contact Details:

- Clodagh McAnerney (Project Manager) +353 87 676 8806 clodagh.mcanerney@xocean.com
- JP Kearns (Marine Superintendent): +353 87 051 8601 jp.kearns@xocean.com
- Tom Davenport (Project Manager) +44 7759 237524 tom.davenport@xocean.com
-
- Kevin Harnett (COO) +353 87 975 3797
- James Ives (CEO) +353 87 123 5175
