



### MERSEY DOCKS AND HARBOUR COMPANY LTD

Gary Doyle  
Group Harbour Master

River Mersey

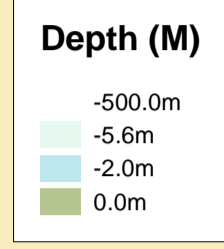
LPR001\_2\_2022\_006

### Gladstone River Entrance

Vessel:	Royal Charter
Surveyed by:	FT
Processed by:	NM
Checked by:	NM
Surveyed:	21st September 2022
Issued:	22nd September 2022
Lock Surveyed:	21st September 2022

**DEPTHS**  
Depths are in metres and are reduced to chart datum being 4.93m below Ordnance Datum (Newlyn), which is approximately the level of Lowest Astronomical Tide.

**HEIGHTS**  
Heights are in metres. Underlined figures show heights above Chart Datum.

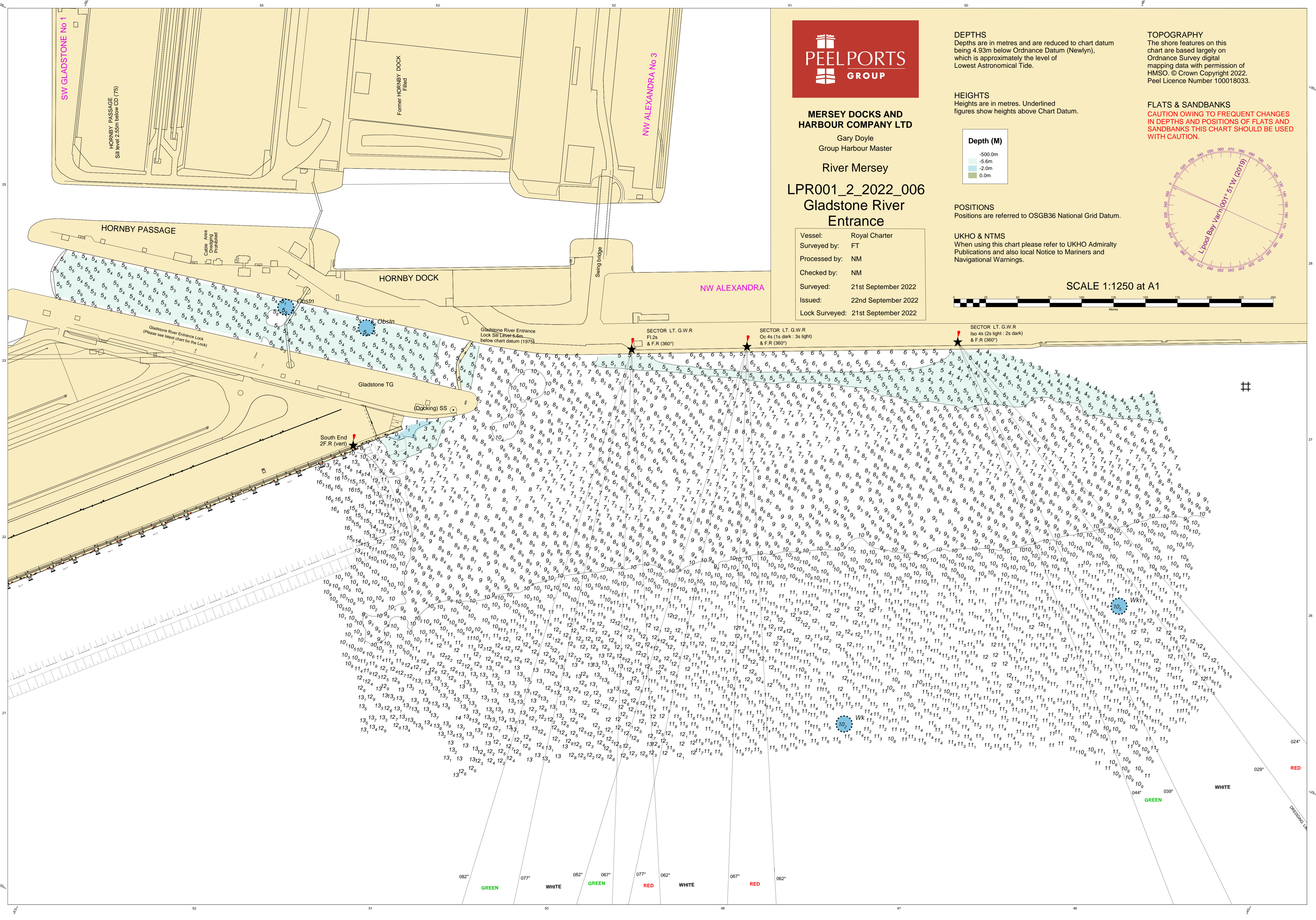
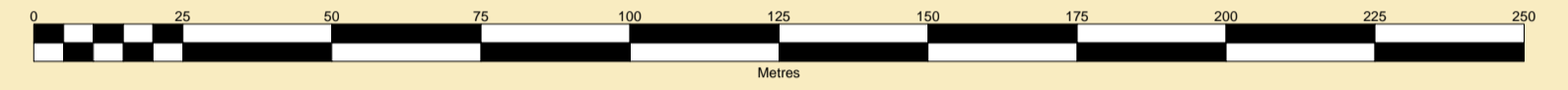
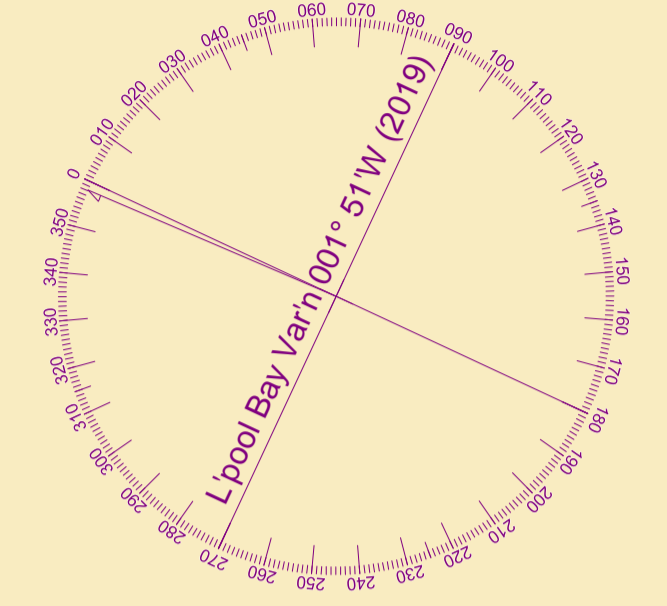


**POSITIONS**  
Positions are referred to OSGB36 National Grid Datum.

**UKHO & NTMS**  
When using this chart please refer to UKHO Admiralty Publications and also local Notice to Mariners and Navigational Warnings.

**TOPOGRAPHY**  
The shore features on this chart are based largely on Ordnance Survey digital mapping data with permission of HMSO. © Crown Copyright 2022. Peel Licence Number 100018033.

**FLATS & SANDBANKS**  
CAUTION OWING TO FREQUENT CHANGES IN DEPTHS AND POSITIONS OF FLATS AND SANDBANKS THIS CHART SHOULD BE USED WITH CAUTION.



#

RED  
WHITE  
GREEN

RED  
WHITE  
GREEN