



**MERSEY DOCKS AND HARBOUR COMPANY LTD**

Captain Susan Cloggie-Holden MNM  
Group Harbour Master

Liverpool Docks

**LPD003\_1\_2026\_005  
ALEXANDRA DOCK  
AND BRANCHES**

**DEPTHS**

Depths are in metres and are reduced to chart datum being 4.93m below Ordnance Datum (Newlyn), which is approximately the level of Lowest Astronomical Tide.

**HEIGHTS**

Heights are in metres. Underlined figures show heights above Chart Datum.

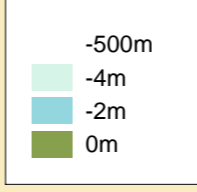
**POSITIONS**

Positions are referred to OSGB36 National Grid Datum.

**UKHO & NTMS**

When using this chart please refer to UKHO Admiralty Publications and also local Notice to Mariners and Navigational Warnings.

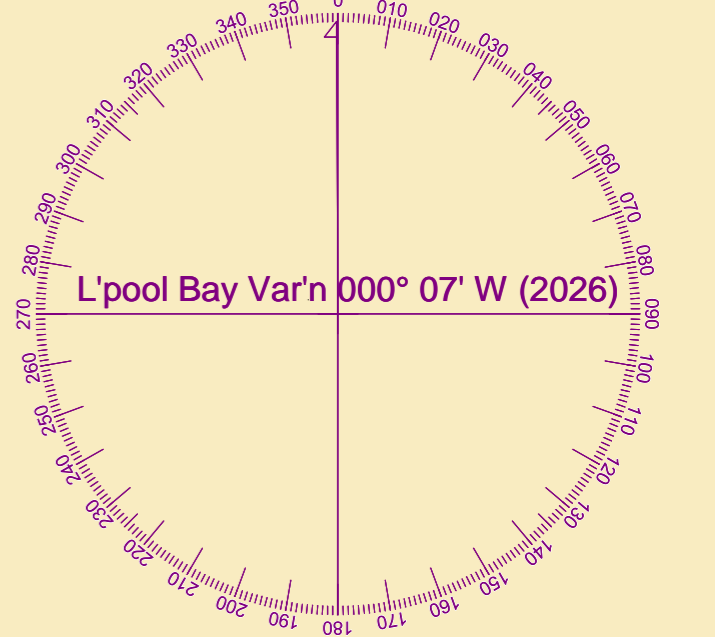
**Depth (M)**



**TOPOGRAPHY**

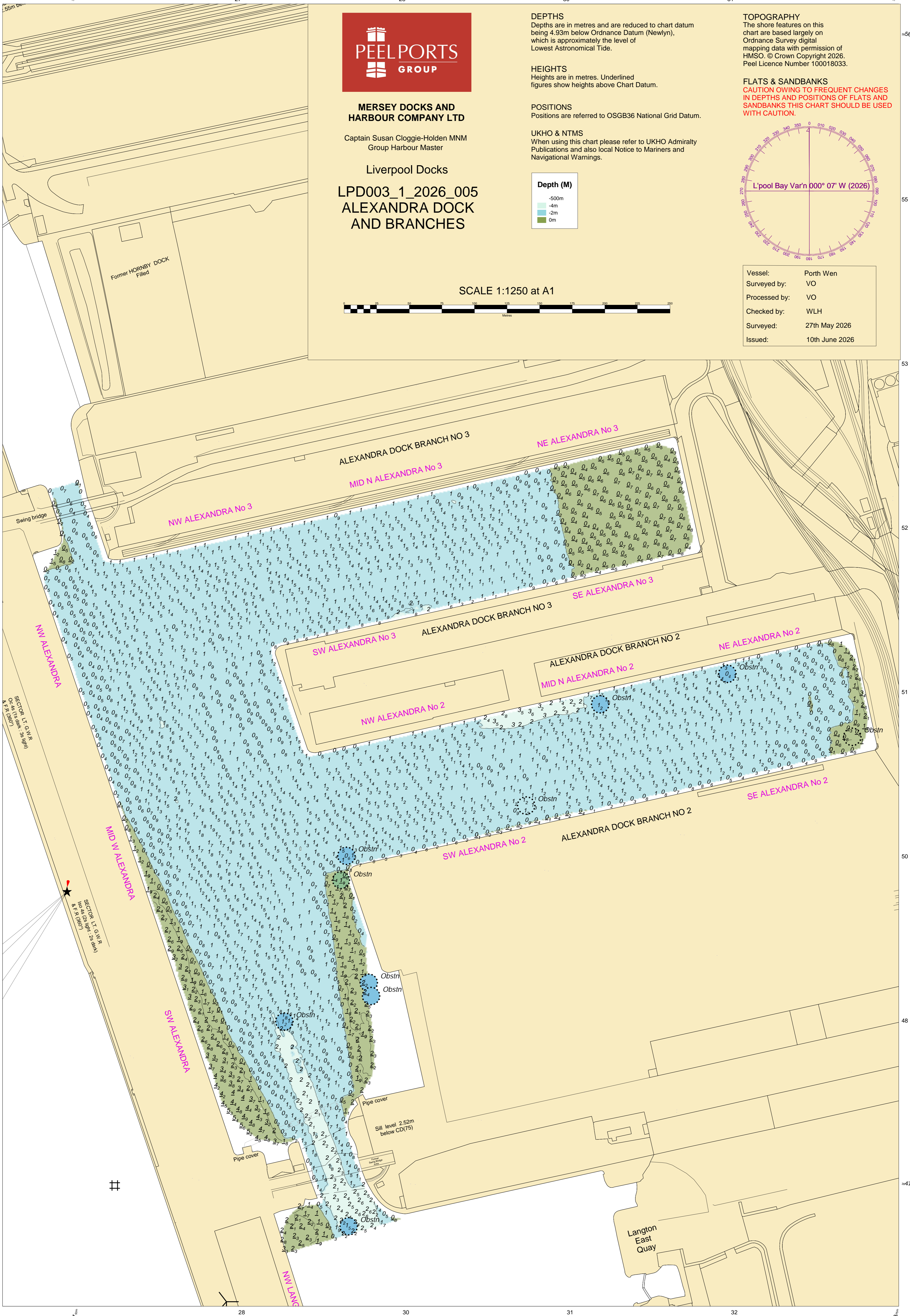
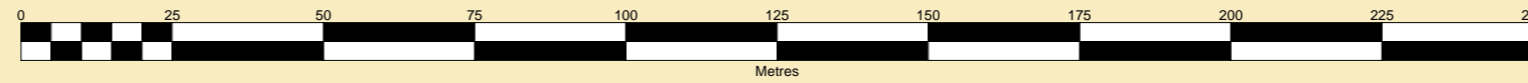
The shore features on this chart are based largely on Ordnance Survey digital mapping data with permission of HMSO. © Crown Copyright 2026. Peel Licence Number 100018033.

**FLATS & SANDBANKS**  
**CAUTION OWING TO FREQUENT CHANGES IN DEPTHS AND POSITIONS OF FLATS AND SANDBANKS THIS CHART SHOULD BE USED WITH CAUTION.**



Vessel:	Porth Wen
Surveyed by:	VO
Processed by:	VO
Checked by:	WLH
Surveyed:	27th May 2026
Issued:	10th June 2026

SCALE 1:1250 at A1



Former HORNBY DOCK Filled

Swing bridge

ALEXANDRA DOCK BRANCH NO 3

NE ALEXANDRA No 3

NW ALEXANDRA No 3

MID N ALEXANDRA No 3

ALEXANDRA DOCK BRANCH NO 3

SE ALEXANDRA No 3

SW ALEXANDRA No 3

ALEXANDRA DOCK BRANCH NO 2

NE ALEXANDRA No 2

NW ALEXANDRA No 2

MID N ALEXANDRA No 2

ALEXANDRA DOCK BRANCH NO 2

SE ALEXANDRA No 2

NW ALEXANDRA

MID W ALEXANDRA

SW ALEXANDRA

NW LANE

Obstn

Obstn

Obstn

Obstn

Obstn

Pipe cover

Pipe cover

Sill level 2.52m below CD(75)

Langton East Quay

SECTOR LIGHT: Green  
Dec 46 (1988) A.F. (080)

SECTOR LIGHT: Red  
Dec 46 (1988) A.F. (080)