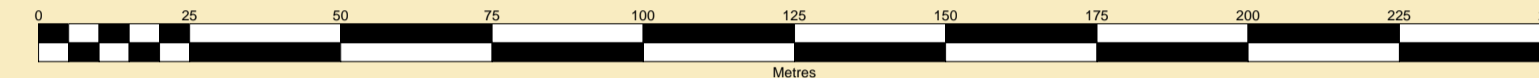




**MERSEY DOCKS AND HARBOUR COMPANY LTD**  
 Captain Susan Cloggie-Holden MNM  
 Group Harbour Master

River Mersey  
 LPR001\_3\_2026\_007  
 Langton River Entrance

SCALE 1:1250 at A1



**DEPTHS**  
 Depths are in metres and are reduced to chart datum being 4.93m below Ordnance Datum (Newlyn), which is approximately the level of Lowest Astronomical Tide.

**HEIGHTS**  
 Heights are in metres. Underlined figures show heights above Chart Datum.

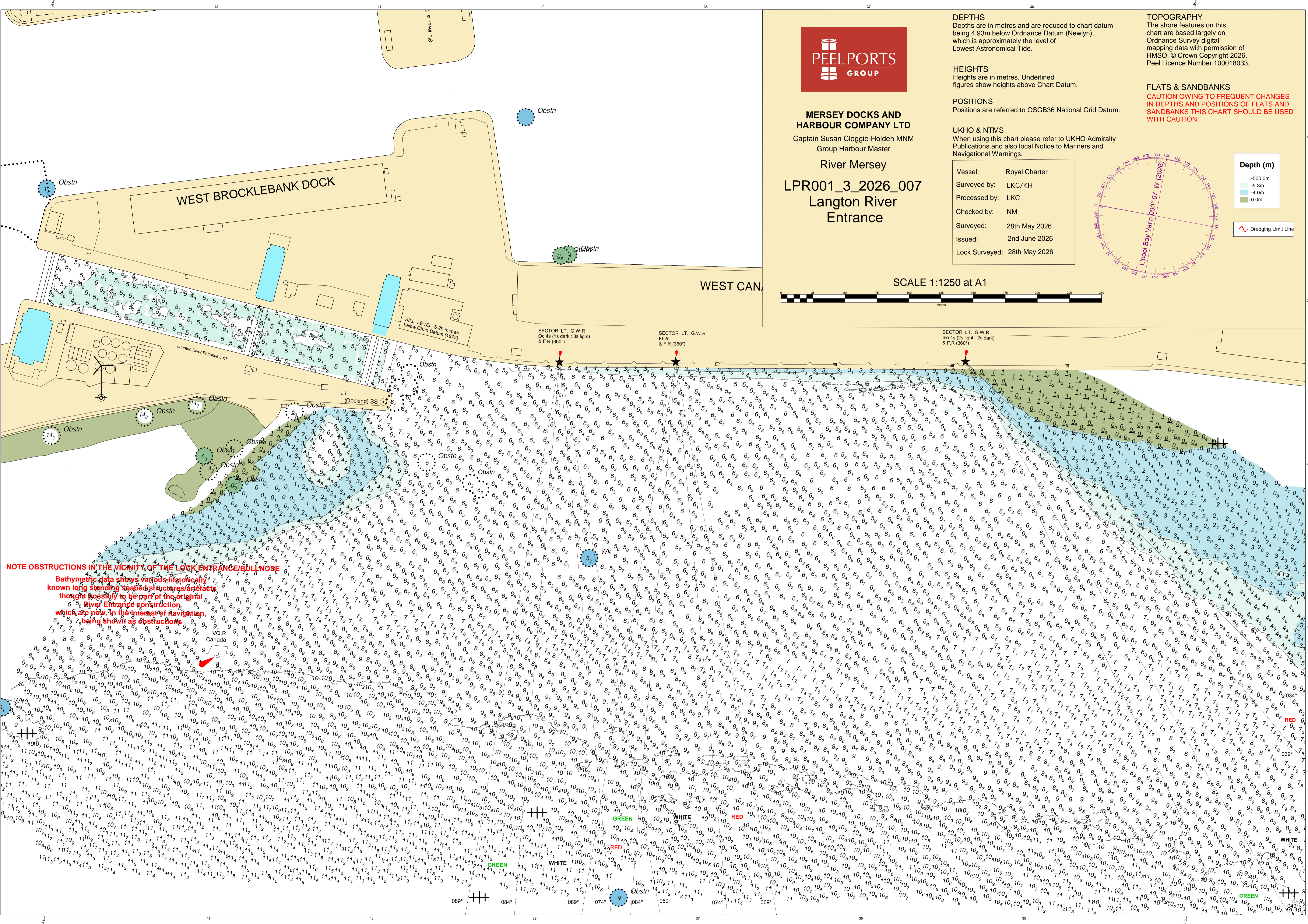
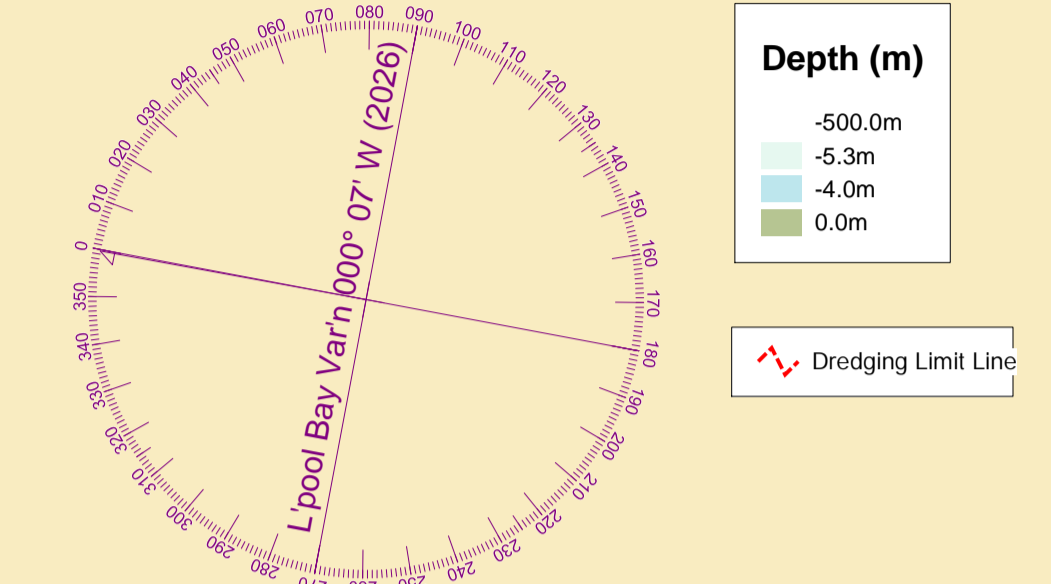
**POSITIONS**  
 Positions are referred to OSGB36 National Grid Datum.

**UKHO & NTMS**  
 When using this chart please refer to UKHO Admiralty Publications and also local Notice to Mariners and Navigational Warnings.

Vessel: Royal Charter  
 Surveyed by: LKC/KH  
 Processed by: LKC  
 Checked by: NM  
 Surveyed: 28th May 2026  
 Issued: 2nd June 2026  
 Lock Surveyed: 28th May 2026

**TOPOGRAPHY**  
 The shore features on this chart are based largely on Ordnance Survey digital mapping data with permission of HMSO. © Crown Copyright 2026. Peel Licence Number 100018033.

**FLATS & SANDBANKS**  
**CAUTION OWING TO FREQUENT CHANGES IN DEPTHS AND POSITIONS OF FLATS AND SANDBANKS THIS CHART SHOULD BE USED WITH CAUTION.**



**NOTE OBSTRUCTIONS IN THE VICINITY OF THE LOCK ENTRANCE/BULLNOSE**  
 Bathymetric data shows various historically known long standing seabed structures/objects thought possibly to be part of the original River Entrance construction, which are now in the interests of navigation, being shown as obstructions.

